

# NZPI / 2016 ANNUAL REPORT



EMPOWER PLANNERS  
PROMOTING PLANNING EXCELLENCE





‘PLANNING IS BRINGING THE  
FUTURE INTO THE PRESENT SO  
THAT YOU CAN DO SOMETHING  
ABOUT IT NOW.’

Alan Lakein

# SUMMARY

Welcome to the 2016 NZPI Annual Report. 2016 was a year of change for NZPI, with a number of staff leaving the Institute and new staff joining. However, throughout all the changes we have continued with our commitment to empower planners and promote planning excellence today, and into the future.

We have appreciated the continuing support of our members during the year, and we look forward to your continued support as we move into 2017.



## CONTENTS

---

<i>3 – 2016 year in review</i>
<i>13 – 2016 NZPI award winners</i>
<i>17 – Our Board and Officers</i>
<i>18 – Our history</i>
<i>19 – Draft minutes / 2016 AGM</i>
<i>19 – 2017 AGM agenda</i>
<i>21 – Financial foreword</i>
<i>22 – Independent auditor's report</i>
<i>23 – Financial statements</i>
<i>30 – Membership directory</i>

---

# 2016 YEAR IN REVIEW

## NZPI Board

2016 was the second year in the 3-year term of the current Board. This timing proved to be of significant benefit to the Institute as it allowed the Board to provide stable governance and oversight during the staff changes that occurred. In addition to keeping a steadying hand on the Institute, the Board initiated a review of the NZPI Strategic Plan as the current plan reached its end date in 2016.

The draft 2017 – 2020 Strategic Plan focuses the Institutes efforts around four key themes:

- *the profile of the profession*
- *our membership*
- *technical and professional excellence*
- *the continuity of the Institute*

## NZPI Membership

Membership is at the heart of the NZPI and indeed its raison d'être. The last five years have seen growth in our membership of between 3 and 4 percent annually. 2016 was no exception and it was great to see growth of 3.76 percent. This growth saw our membership top 2,300 for the first time in the Institute's history.

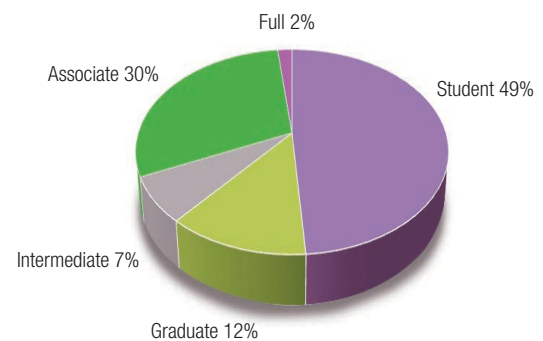
The increase included 170 new members, with almost half of these being students enrolled in our accredited degrees. In addition to the new memberships we had over 50 lapsed members whose membership was reinstated in 2016.

The breakdown of new members is listed on the chart to the right.

It was also encouraging to see our members getting actively involved in our Continuing Professional Development programme and the 2016 NZPI Conference.

The Institute had 634 members and 283 non-members attend a CPD course during the year, as well as 108 in attendance at the NZPI hosted MfE training events. Highlighting the geographic spread of our members, 339 members and 185 non-members attended branch events around the country and almost 600 delegates joined us in Dunedin for the NZPI Annual Conference. NZPI thanks all the members who volunteer time to serve on the membership committee, as well as those who have assisted in interviewing new members throughout the year. A full listing of our current membership is on pages 31–36 of this report.

Numbers of new members for each category (excluding reinstatement)

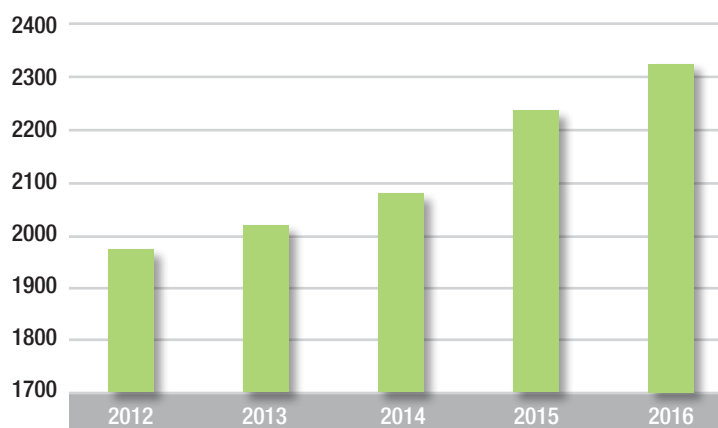


2016

**2,322**

NZPI MEMBERS

Total membership 2012 – 2016







## Distinguished Service Awards

The NZPI Distinguished Service Awards recognise individuals who have made a significant contribution to the image and practice of planning, undertaken original research which has advanced the theory and practice of planning in New Zealand and overseas, made a major contribution to the affairs of NZPI, or achieved national or international recognition as a leader in the planning profession.

NZPI recognised a number of outstanding achievements by our members, with six Distinguished Service Awards, including one member who received their second Distinguished Service Award – a first for the Institute.

### Recipients of the Distinguished Service Award in 2016 were:

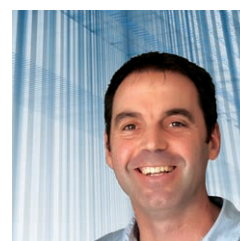
- Graeme McCarrison (Auckland Branch)
- Keith Hovell (Otago Branch)
- Andrew Gysberts (Auckland Branch)
- Carey Pearce (Auckland Branch)
- Dr Lee Beattie (Auckland Branch)
- Ken Tremaine (Auckland Branch, 2nd DSA)

## NZPI staff

The year saw the departure of a number of staff, and we thank them all for the time, energy and effort they put into growing the planning profession while working for the Institute. Most notably was the departure of CEO Susan Houston. We want to acknowledge the progress Susan oversaw at the Institute while CEO and wish her all the best as she steps into a new challenge.

These departures opened the door to bring in new staff in the national office. We are pleased to have welcomed new CEO, David Curtis, new Events Manager, Vanessa White, new Senior Policy Advisor, Joel Cayford, new Membership Administrator, Alison Robins, and new Events and CPD Administrator, Lauren Newbery. These new staff join long-serving staff members Manfred Lee (Membership & Operations Manager), Melissa Hubbard (Communications Officer) and Savana Carroll (Finance Administrator).

We also want to offer a special vote of thanks to Raewyn Stone, who stepped in as interim CEO following Susan's departure. On behalf of the Board, we thank you for all the work you did to keep the Institute moving ahead while we recruited our new CEO.



David Curtis / NZPI CEO

# 2016 YEAR IN REVIEW

## NZPI and central government

2016 has been an exceptionally challenging year because of the extent of central government's planning reform agenda, and because of the significance of planning issues including extreme housing affordability and elevated immigration levels. A key focus has been the need to develop an NZPI view of how NZ's planning system could be improved, so this can provide a basis for NZPI submissions.

NZPI has needed to be more proactive than usual in policy and submission work, and its Chair and CEO's have had a number of engagement meetings with Ministry for Environment (MfE) and Productivity Commission officials. As we know the machinations of government move at their own pace and so, while we have been very proactive around our engagement with central government throughout the year, we are yet to see any final outcomes from our submissions and engagement. This does mean 2017 is shaping up to be even more challenging in the policy area with central government continuing to work through a range of policy initiatives.

During the year in review NZPI prepared several comprehensive submissions, most of which included consultation with the broader membership, and all of which were considered by NZPI Planning Advisory Committee members.

The development of submissions was led most ably and actively by Karyn Sinclair with significant support from NZPI Policy Advisor Joel Cayford, with the most important requiring NZPI Board input and advice. The main submissions were:

- **Resource Legislation Amendment Bill (RLAB)**
- **National Policy Statement on Urban Development Capacity (two separate submissions, engagement with MfE and MBIE on implementation)**
- **LGNZ's Blue Sky document**
- **Productivity Commission's Review of NZ's System of Urban Planning (two separate submissions, engagement at 2016 NZPI conference).**



Draft versions of these submissions have been the subject of various issues of Planning Focus, and have been available on the website under a new "Submissions" tab. Substantial interest has been shown by members and significant feedback and suggestions have been received.

Preliminary reports relating to the policy analysis work were widely circulated. These have been referred to and used by various TLAs in New Zealand in the production of their own submissions, and led, for example, to an NZPI senior staff deputation to attend a meeting with senior policy staff at the offices of the Parliamentary Commission for the Environment.



Following the NZPI submissions to RLAB, an NZPI deputation made an Oral submission to the Local Government and Environment Select Committee on Monday 9th May. This was attended by NZPI Board members Julie Bevan and Karyn Sinclair. The Select Committee Chair acknowledged the detail and comprehensiveness of the NZPI submission, with questions from members Eugenie Sage, MP, and David Parker, MP. Eugenie Sage commented specifically on the Appendix to the NZPI RLAB submission, where NZPI outlines its approach to how New Zealand's planning system could be improved.



## Professional Standards

NZPI has a Code of Ethics, which its members commit to upon joining the Institute, and is required to consider perceived breaches of that code. NZPI has a Professional Standards Committee (PSC) who have considered a number of issues that have either been brought to its attention informally, or as the subject of an official complaint. While the number of issues that PSC considers vary from year-to-year, all complaints are treated seriously and investigated appropriately.

The NZPI Constitution insists that the results of the PSC's deliberations remain confidential, however, we can report that in all instances the issues referred to the PSC have been considered and concluded. The table below sets out the number of issues reviewed by the PSC each year over the past seven years.

NZPI PSC complaints received, considered and concluded:	
2010	4
2011	3
2012	1
2013	1
2014	4
2015	1
2016	3

## The Planning Advisory Committee

The Planning Advisory Committee (PAC) is made up of all the NZPI Branch Chairs and the national representatives of both Papa Pounamu and NZPI Young Planners. Meeting four times a year, PAC is charged with contributing to NZPI's policy, submissions and strategy.

During the year in review, the committee have been active in reviewing changes made to membership pathways, compulsory CPD requirements, contributing to NZPI submissions, and the drafting of the new Strategic Plan. PAC remains a valuable group, ensuring robust two-way communications between the executive and the branch membership across the country.

### PAC members are:

- Theresa Walsh (Auckland/Northland)
- Richard Douch (Waikato)
- Romae Calland (Bay of Plenty)
- Andrea Harris (Central North Island)
- Mitch Lewandowski (Wellington)
- Reuben Peterson (Nelson/Marlborough)
- Alex Jepsen (Canterbury/Westland)
- Murray Brass (Otago)
- Alyson Hutton (Central Otago)
- Luke McSorley (Southland)
- Reg Proffitt (Papa Pounamu)
- Ying Liu (Young Planners)
- Todd Whittaker (NZPI Board)





# 2016 YEAR IN REVIEW

## Education Policy Review

During the year the Board approved a new Tertiary Education Policy and Accreditation Procedure (TEPAP). This work was led by Gary Rae and involved consultation with our University partners and PAC.

The revised education policy was very well received by the Universities. It reflects the Board's desire to maintain a commitment to full membership for heads of planning and teaching staff. It also provides some much sought after flexibility to recognise the varying circumstances they have with regards to teaching content, requirements, origins and qualifications of individual staff. Another key aspect is the retention of the accredited 240 credit Masters degrees in light of a move to shorter courses in other disciplines and in planning courses overseas.

The Board has identified that further work may be required on a wider education strategy to consider promoting education in planning disciplines at secondary schools.



## Conferences

Hosted by the Otago branch and held in Dunedin – one of the world's great small cities – the 2016 NZPI Conference was attended by almost 600 delegates. The conference theme was "Over the Rainbow" and featured more than 70 local and international keynote speakers, presenters and panelists.

Keynote speakers included Sir Geoffrey Palmer, Professor Natalie Jackson, Joseph Minicozzi, Minister Nick Smith from National, and Labour's Phil Twyford. Topics varied from 'The Resource Legislation Amendment Bill, The Productivity Commission Project, and the future of Planning for the Environment in New Zealand' to 'Can humans survive the 21st century – our top ten existential risks and what we should do about them'. These keynote sessions were supported by parallel streams which included 'Planning for an aging population', 'Climate change and natural hazards', 'The contrasts of high and no growth planning', and 'Technology in planning'.

Delegates could also choose from a range of field trips, different social event options each night, and the Gala Awards Dinner, which concluded a successful conference.



*NZPI would like to thank all the members of local organising committee, led by co-convenors Kirsten Tebbutt and Shane Roberts, for the many hours of hard work they put into making the conference a success. We also wish to thank all of our valuable, and much needed sponsors, especially Gold Sponsor, Opus International, for their support of the conference.*







In addition to the 2016 NZPI Conference, we hosted the Commonwealth Association of Planners (CAP) biennial business meeting at the 'Planning for Sustainable Development' Conference in Fiji. This was an exciting opportunity for us as a Pacific nation to host members of CAP in our region. Highlights included an address from Commonwealth Secretary-General, Baroness Patricia Scotland, presentations from Ben Bolgar, Senior Director at The Princes Foundation for Building Community, Dr Asad Mohammed from the University of West Indies, and study tours to Suva and Nadi/Lautoka.

The conference gathered together representatives from small island developing states. Of particular value was having representatives from the Caribbean nations who could share their experiences in forming a regional umbrella planning association – the Caribbean Planners Association (CPA). The relationship formed with CPA will assist with a similar initiative that is underway in the Pacific as we work with PIA and other Pacific nations to re-establish an umbrella Pacific Islands Planning Association (PIPA).

The CAP conference outcomes included building and enabling local capacity, a CAP Declaration which calls for all Commonwealth governments to give effect to the New Urban Agenda and the Quito Implementation Plan.

NZPI wish to thank the members of the Fiji Task Force and the Fiji Government for their hard work – the conference would not have happened without your support.

Our events staff finished the year by organising another extremely successful Environmental Compliance Conference. With more delegates, presenters and exhibitors than ever before, the conference was deemed a huge success and NZPI were pleased to be able to support this strategically important event.



# 2016 YEAR IN REVIEW

## Membership pathway and compulsory CPD requirements



After an extensive consultation process, the new Membership Pathway and review of CPD requirements initiatives took effect from 1 January 2016. These changes sought to provide more structure and support to the transition of members from student, to graduate, intermediate and finally to full membership. A set of core or compulsory CPD requirements were also introduced to ensure that all members gained equivalent professional development.

As members started to transition through the new pathway, it became clear that there were a number of implementation issues with the new regime. These included:

- ***New graduates having to attend CPD courses which may have been more comprehensively covered through their academic training***
- ***More experienced members required to attend CPD courses which did not offer any value given their professional experience and background.***

The PAC Committee and Board received a range of queries and criticism about the compulsory CPD regime and established a Review Panel to provide recommendations on the matters which had been raised.

The Review Panel reported at the December Board meeting and a number of resolutions were made. These included a temporary blanket exemption for all graduates transitioning to intermediate, and an exemption policy for applicants for full membership.

The Board also decided that the brief for the Review Panel should be extended to reconsider the merits of requiring compulsory core CPD and whether the membership application process should focus more on areas of competency and demonstrated work experience. As a result, the CPD review is being continued into 2017, with a revised focus in line with the Board's directive.







## CPD Audit

2016 was the third consecutive year that the NZPI undertook a full audit of all members CPD points. This process has shown that at the end of the year approximately 65% of members had completed their CPD requirements. The audit also highlighted that almost 5% of our members had not completed their CPD requirements in any of the three consecutive years covered by the audit.

The audit results indicate a number of issues with the current CPD programme, even after the changes made over the last 12 months. As we focus on driving professionalism and competency within the industry, it is critical that our CPD programme is fit for purpose, that recording CPD is efficient, and that members are engaged with CPD. It is apparent that this is not currently the case.

These results support the concerns discussed by the Board and the subsequent directive to PAC to continue with the CPD review. This review is critical to ensure that we are working towards an efficient, engaging and appropriate CPD programme that adds real value to our members.

### CPD points can be gained from numerous activities including:

Getting involved with others in the planning profession:

- *Mentoring young planners*
- *Conference presentations*
- *Involvement in planning related professional committees (i.e. Board members, branch members or Full Membership interview panellist)*

Or supporting the profession:

- *Publishing articles and papers*
- *Quality Planning Website*

Or even reading Planning Focus, Planning Quarterly Magazine or Court Decisions.



2016

# 96

CPD COURSES AND EVENTS,  
WITH AT LEAST ONE IN EVERY  
NZPI BRANCH

# 634

MEMBERS ATTENDED A  
CPD COURSE DURING THE YEAR,  
COMPARED WITH 400 IN 2015

TWO ADDITIONAL NZPI HOSTED  
MFE EVENTS

*The NZPI Board wish to thank  
all CPD presenters, and members  
who attended a CPD course.*



# 2016 YEAR IN REVIEW



## Papa Pounamu

Throughout the year the Papa Pounamu Committee has been deliberate and considered, taking a conservative approach and not wanting to over promise and fall short. In 2016 Papa Pounamu branches have been established in Hamilton, Tauranga, Auckland and Wellington. These local branches are a means of connecting with people who have an affinity and connection in working with or for Māori and Pacific peoples' in planning, primarily to support, grow and strengthen local networks, and to share ideas and thoughts at a local level. Papa Pounamu alongside Ngā Aho also provided critical input into the Productivity Commissions Inquiry into Better Urban Planning.



This approach recognises that to achieve greater integration of Māori environmental cultural practices in the New Zealand planning sector, the application of those practices must be specific and reflective of local Māori. To date, we have 121 Papa Pounamu registered members who identify as non-Māori, Māori and/or Pacific who work, and or participate in New Zealand's planning sector.



The Board thanks the leadership of Papa Pounamu, especially Reginald Proffit, Chair, committee members Nassah Steed, (secretary), James Whetu, Kataraina O'Brien and Namouta Poutasi, as well as Young Planner representative Jessica Samuels, and new Branch Convenors Jacky Bartley, Jade Wikaira and Shad Rolleston.





## PQ Magazine

PQ Magazine continues to go from strength to strength. The 2016 quarterly issues provided insightful input and analysis on policy issues such as the Resource Legislation Amendment Bill to cultural issues in large infrastructure projects. Thanks to the hard work of the Editorial Panel, and all the contributors, PQ Magazine continues to be recognised as a valuable read for everyone in, and associated with the planning profession. 2016 saw a 'passing of the baton', as Gina Sweetman stepped down as editor after nine years guiding and shaping the magazine. She has been ably replaced by Amelia Linzey, who took the reins with the June issue.



## Media Communications

- 447,977 website hits. 7.5% of all hits were from outside of New Zealand. 20% of traffic to the website was from mobile platforms (phones/tablets)
- Online Consultants Directory 30,130 hits, approximately 10% of which came from overseas with 30% of the overseas traffic coming from Australia
- Facebook and Twitter followers combined total 2148, up 40% on 2015.



2016

# 447,977

WEBSITE HITS COMPARED WITH 434,383 IN 2015



# 40%

INCREASE IN FACEBOOK AND TWITTER FOLLOWERS

# 2016 NATIONAL AWARD WINNERS







### NZPI National Awards – awarded in recognition of planning excellence

2016 was another exceptional year in the planning profession, demonstrated by a very high standard of entries that made this year's judging a challenge for the awards panel. Presented at the Gala Awards Dinner in the Dunedin Town Hall, the awards provided the opportunity for all NZPI members to celebrate our planning professionals.

The Board wish to thank and acknowledge members who submitted an entry, and congratulate all of the award winners listed on the following pages.

The winners of the **NZPI 2016 Nancy Northcroft Supreme Planning Practice Award** were: Harrison & Grierson and Auckland Council for their work on the Scott Point Structure Plan and Plan Variation.



# 2016 NATIONAL AWARD WINNERS



## The Reginald Hammond Scholarship

Established in commemoration of the first New Zealander to complete a Town Planning qualification, the Reginald Hammond scholarship is awarded annually to a student in the final year of an accredited undergraduate or post-graduate planning degree in New Zealand.

The 2016 winner was Jordyn Landers, who was completing her Masters of Planning at the University of Otago. Having received the prestigious award, Jordyn headed off for a 6-month exchange to attend University College Dublin (UCD), where she completed her degree as well as taking the opportunity to enhance her planning knowledge with an international perspective.



## Rodney Davies Project Award

This award recognises innovative and creative excellence in the undertaking and completion of a project involving a physical work or development. The winners of the 2016 NZPI Rodney Davies Project Award were: GHD, the NZ Transport Agency, Novare and Monk Mackenzie for The Lightpath project.

## Rodney Davies Project Special Commendation

The finalists in Rodney Davies Project Award were so strong that the awards panel determined a Special Commendation was appropriate recognition for a second project. The winners of the 2016 NZPI Rodney Davies Project Commendation were: Planz Consultants, Athfield Architects, and Canterbury Cricket Association for the Hagley Oval Redevelopment.

## Best Practice: District and Regional Planning

The winners of the NZPI 2016 Best Practice Award for District and Regional Planning were: Harrison Grierson and Auckland Council for their collaborative work on The Scott Point Structure Plan and Plan Variation.



## Best Practice: Excellence in Integrated Planning

The winners of the NZPI 2016 Best Practice Award for Excellence in Integrated Planning and Investigations were: The YMCA Auckland, Beca, ESR, and Boffa Miskell for the Camp Adair Wastewater Management Strategy.





## Best Practice: Excellence in Consultation and Participation Strategies and Processes

The winners of the NZPI 2016 Best Practice Award in Consultation and Participation Strategies and Processes were: The Well-Connected Alliance, Auckland Council and the Albert-Eden Local Board for their collaborative work on the Waterview Connection: Design of Waterview Playground.



## Best Practice Commendation: Excellence in Consultation and Participation Strategies and Processes

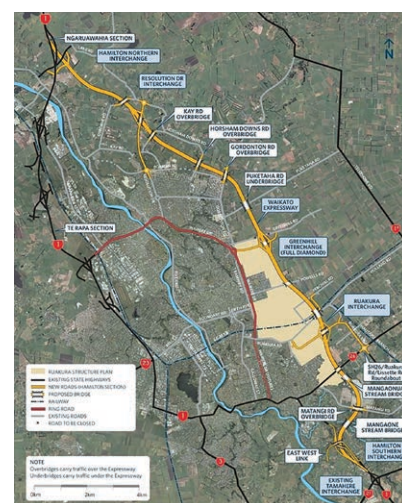
This award was another one where the contenders were almost inseparable, so again NZPI chose to award a commendation for Best Practice in Consultation and Participation Strategies and Processes. The winners were: Opus International, Waikato-Tainui and New Zealand Transport Agency for the Waikato-Tainui Mitigation Plan.

## Best Practice: Strategic Planning and Guidance

The winners of the NZPI 2016 Best Practice Award Strategic Planning and Guidance were: Christchurch City Council, Christchurch Earthquake Recovery Authority and Matapopore Charitable Trust for their work on the Christchurch Central Streets and Spaces Design Guide.

## Nancy Northcroft Supreme Planning Practice Award

The winners of the NZPI 2016 Nancy Northcroft Supreme Planning Practice Award were: Harrison and Grierson and Auckland Council for their work on the Scott Point Structure Plan and Plan Variation.



# OUR BOARD AND OFFICERS

## Our Board



Bryce Julyan  
Chair



Keith Hovell  
Deputy Chair



Luke O'Dwyer  
Board member



Sarah Jenkin  
Board member



Gary Rae  
Board member



Todd Whittaker  
Hon Treasurer/Secretary



Karyn Sinclair  
Board member



Julie Bevan  
Board member

## Our Officers



David Curtis  
Chief Executive Officer



Joel Gayford  
Senior Policy Advisor



Vanessa White  
Events Manager



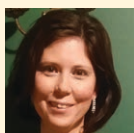
Melissa Hubbard  
Communications Officer



Manfred Lee  
Membership & Operations Manager



Savana Carroll  
Administrator



Alison Robins  
Membership Administrator



Lauren Newbery  
Events Coordinator

# NZPI HISTORY



## Planning on evolving and growing

The leading planning association in New Zealand, like the planning profession it serves, has evolved over many decades and so too has its name; ranging from the Town Planning Institute of New Zealand between 1931-1946, to its current name of The New Zealand Planning Institute from 1969. Throughout its various guises (five in all), the organisation has been led by 44 esteemed planners.

In 2012, the title of 'President' was replaced by that of 'Chair'. The current Chair is Bryce Julian.

### Past Presidents of the Insitute are:

1931	H F Johnson K C	1973-1975	K G Dobbie
1931-1932	C K Grierson	1975-1977	F W Norton
1932-1935	S Blackley	1977-1979	R J P Davies
1935-1936	A W De R Galbraith	1979-1981	M E Jones
1936-1937	H F Butcher	1981-1984	W D Ross
1937-1940	M G C McCaul	1984-1986	W A Robertson
1940-1942	E H Andrews	1986-1988	D D Hinman
1942-1943	A J Baker	1988-1990	John Childs
1943-1944	R B Hammond	1990-1992	Sylvia Allan
1944-1945	A H Bridge	1992-1994	Lance Leikis
1946-1947	J W Mawson	1994-1996	Leigh Auton
1947-1950	R B Hammond	1996-1998	Jenny Dixon
1950-1952	C E H Putt	1998-2000	Robert Schofield
1952-1954	F C Basire	2000-2002	Michael Foster
1954-1956	F W O Jones	2002-2004	Paula Hunter
1956-1958	A L Gabites	2004-2006	Cheryl Cleary
1958-1960	J W Cox	2006-2008	Michael Gunder
1960-1962	D G Porter	2008-2010	Hester den Ouden
1962-1964	I B Reynolds	2010-2012	Jane Douglas
1964-1967	I G Dunn	2012-current	Bryce Julian
1967-1969	N Northcroft		
1969-1970	P W T Bagnall		
1970-1972	D J Edmonson		
1972-1973	M M Latham		





# 2016 DRAFT AGM MINUTES

**Wednesday 13 April 2016**

**5.30 pm**

**Dunedin Town Hall**

**Attendance:** Dr Lee Beattie, Andrew Henderson, Dr Wendy Saunders, Paul Waunders, Philip McKay, Nick Aiken, Biddy Livesay, Jacky Bartley, Jess Samuels, Andrea Harris, Christian McDean, Michelle Thompson-Fawcett, Mike Foster, Maaike Duncan, Reginald Proffit, Luke McSoriley, Kataraina O'Brien, John Duthie, Julie Bevan, Bryce Julian, Todd Whittaker, Gary Rae, Sarah Jenkin, Luke O'Dwyer, Karyn Sinclair, Susan Houston.

**Apologies:** Eileen von Dadelszen, David Forrest, Jane Douglas, Elizabeth Aitken Rose, Jenny Dixon, Keith Hovell.

– Welcome from the Chair, Bryce Julian.

– Health and Safety (H&S) – the Chair noted that the Board had requested the CEO to develop and implement an H&S policy for NZPI (this is underway).

– Draft Annual General Meeting Minutes 2015 were accepted as accurate.

**Mover:** Julie Bevan

**Second:** Sarah Jenkin

## Matters arising from previous minutes

Chair advised of the following progress in relation to the newly formed Papa Pounamu:

- Terms of Reference between Papa Pounamu and NZPI now completed and signed.
  - As a result the Hui was now embedded within the main annual conference.
  - The Board has considered the idea of creating a Maori seat on the Board and concluded that:
- Given the constitutional changes to achieve this, there were many other steps that could be taken to integrate the Maori perspective into planning (with a view that this should be simply part of our DNA).

– The Board wished to explore a process, possibly involving several steps and different paths to achieve integration. The process could start with Papa Pounamu's involvement in the strategic planning processes.

- The Chair thanked Papa Pounamu for its input into the NZPI Strategic Plan Review, and in particular, for allowing NZPI use of the same format for the Strategic Plan.
- The Chair also thanked Papa Pounamu for its ongoing commitment to working with NZPI towards our common, strategic objectives.

The Chair of Papa Pounamu, Reginald Proffit, responded by acknowledging the progress that has been made and thanked NZPI for its support. Papa Pounamu remains keen to explore the steps identified above.

## Draft 2016 Budget

Dr Wendy Saunders asked if NZPI had received any monies for CPD from the EQC. The CEO advised that the funding was in relation to rolling out a specific course which had not generated sufficient support, so no funding was able to be taken up. The 2016 Draft Budget was adopted.

**Mover:** Todd Whittaker

**Second:** Dr Lee Beattie

Nominations for the 2020 NZPI Conference; Napier offered to host the event. Napier confirmed as the 2020 venue.

**Mover:** Bryce Julian

**Second:** Todd Whittaker

Appointment of Accountants: Rightway Ltd confirmed as NZPI accountants.

**Mover:** Bryce Julian

**Second:** Karyn Sinclair

Appointment of Auditors: RSM Hayes.

**Mover:** Bryce Julian

**Second:** Todd Whittaker

## General business

Kataraina O'Brien congratulated and thanked the Board and staff for doing a great job in 2015, and suggested that a vote of confidence be moved.

**Mover:** Kataraina O'Brien

**Second:** John Duthie

The Chair thanked Jason Greiving for the service he had provided NZPI with during his two years as Events Manager.

The Chair spoke about NZPI hosting the Commonwealth Association of Planners Business Forum and associated conference in Fiji, November 2016. The Chair of Papa Pounamu congratulated NZPI on the initiative. Mr John Duthie also supported the idea and asked if anything was required from the AGM to demonstrate that support.

The NZPI Chair advised that it would be helpful if members could indicate their support or interest, and to promote the event to others when it was officially announced.

Meeting closed at 6.10 pm.

## Agenda for the 2017 AGM

**Wednesday 5 April 2017**

**5.00pm**

**TSB Arena, Wellington**

*Welcome from the Chair*

*Attendance and Apologies*

*2016 Draft AGM Minutes*

*Matters Arising from 2016 AGM*

*Budget for 2017*

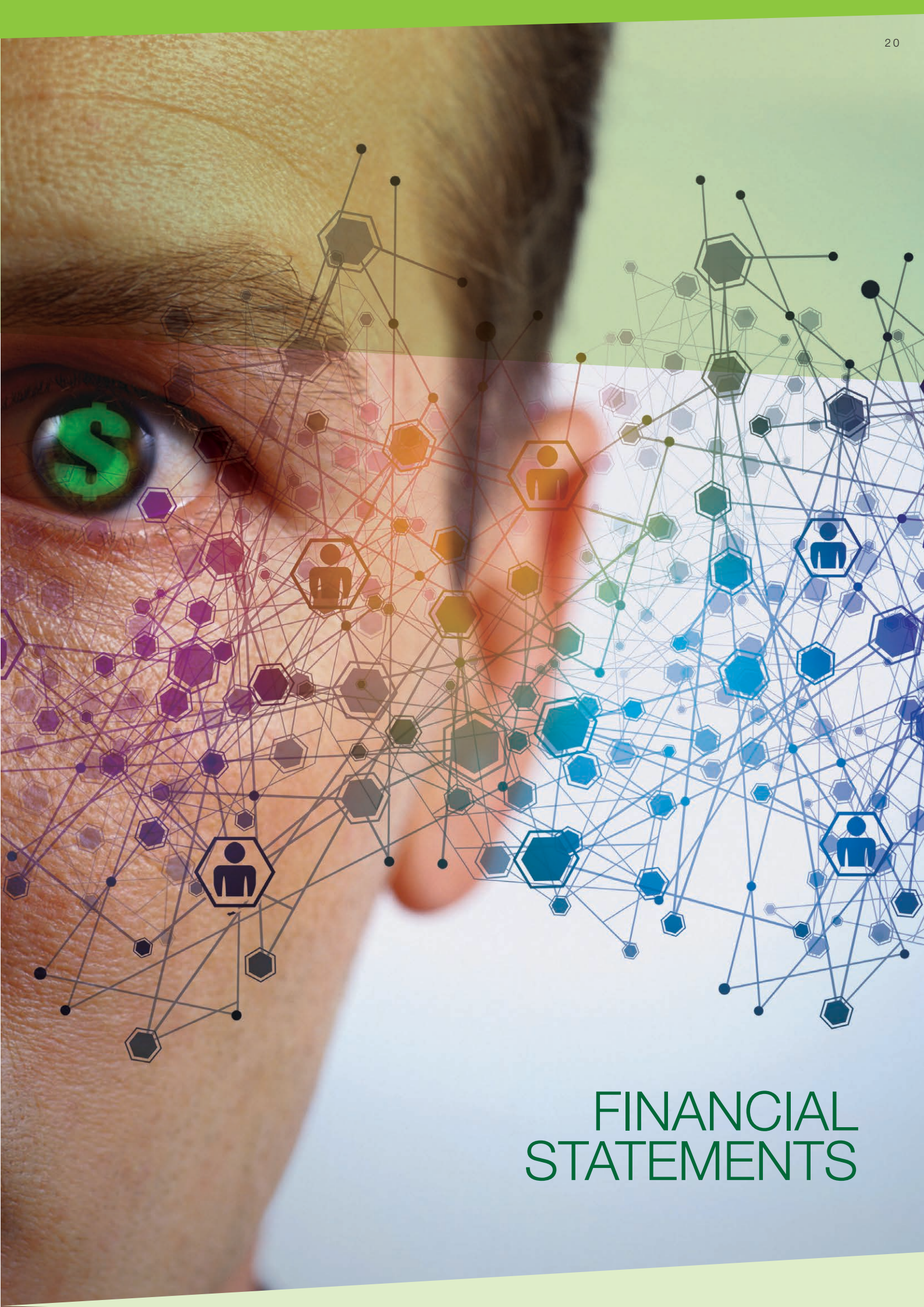
*Nominations for 2022 Conference*

*Appointment of Accountants and*

*Auditors*

*General Business*






# FINANCIAL STATEMENTS

# FINANCIAL FOREWORD

2016 was a positive year financially for NZPI, even with all the change in the office and some unexpected recruitment and interim staff costs. We are pleased to report that we made a surplus of just over \$38,000. This was in line with the revised direction of the Board, who were clear that the Institute needed to operate under financial management policies that ensured the NZPI reserves remain healthy, and that we achieved modest surpluses.

Throughout the year our financial systems underwent a number of changes. One significant change was a move from cash-based to accrual-based accounting practices, which has assisted us with keeping better control of our finances. The other major change was a move of accountants from Staples Rodway to Rightway. We are pleased that both changes have been positive for the Institute and look forward to the benefits they will bring going forward.

This result enabled NZPI to invest into some additional activities including hosting the strategically important CAP business meeting and Planning for Sustainable Development conference. The Board recognise the need to continue to deliver modest surpluses so that NZPI remains able to take advantage of these strategic opportunities when they arise, so we will be looking to consolidate the 2016 surplus in the 2017 year.



**Todd Whittaker**  
Hon Treasurer / Secretary

---



# INDEPENDENT AUDITOR'S REPORT



## To the members of New Zealand Planning Institute Incorporated

### Opinion

We have audited the financial statements of New Zealand Planning Institute Incorporated ('the entity'), which comprise:

- the balance sheet as at 31 December 2016;
- the statement of profit or loss for the year then ended;
- statement of changes in equity; and
- the notes to the financial statements, which include significant accounting policies.

In our opinion, the accompanying financial statements the entity on pages 23 to 28, for the year ended 31 December 2016, are prepared, in all material respects, in accordance with the stated accounting policies.

### Basis for opinion

We conducted our audit in accordance with International Standards on Auditing (New Zealand) (ISAs (NZ)). Our responsibilities under those standards are further described in the Auditor's responsibilities for the audit of the financial statements section of our report. We are independent of New Zealand Planning Institute Incorporated in accordance with Professional and Ethical Standard 1 (Revised) Code of Ethics for Assurance Practitioners issued by the New Zealand Auditing and Assurance Standards Board, and we have fulfilled our other ethical responsibilities in accordance with these requirements. We believe that the audit evidence we have obtained is sufficient and appropriate to provide a basis for our opinion.

Other than in our capacity as auditor we have no relationship with, or interests in, the entity.

### Other information

The executive board are responsible for the other information. The other information comprises the New Zealand Planning Institute Incorporated 2016 annual report on pages 1 to 22 and 30 to 36 (but does not include the financial statements and our auditor's report thereon), which we obtained prior to the date of this auditor's report. Our opinion on the financial statements does not cover the other information and we do not express any form of audit opinion or assurance conclusion thereon.

In connection with our audit of the financial statements, our responsibility is to read the other information identified above and, in doing so, consider whether the other information is materially inconsistent with the financial statements or our knowledge obtained in the audit, or otherwise appears to be materially misstated. If, based on the work we have performed on the other information that we obtained prior to the date of this auditor's report, we conclude that there is a material misstatement of this other information, we are required to report that fact. We have nothing to report in this regard.

### Emphasis of matter – basis of accounting and restriction on distribution

We draw attention to the 'Basis of preparation' paragraph on page 26 of the financial statements, which describes the basis of accounting. The financial statements are prepared in accordance with the stated accounting policies, and are intended for use by the members of the entity.

As a result, the financial statements may not be suitable for another purpose. Our report is also intended solely for the members of the entity and should not be distributed to other parties. Our opinion is not modified in respect of this matter.

### Responsibilities of the executive board for the financial statements

The executive board is responsible, on behalf of the entity, for the preparation of the financial statements in accordance with stated accounting policies, and for such internal control as the executive board determines is necessary to enable the preparation of financial statements that are free from material misstatement, whether due to fraud or error. The executive board is also responsible for determining that the stated accounting policies, are acceptable in the entity's circumstances.

In preparing the financial statements, the executive board is responsible, on behalf of New Zealand Planning Institute Incorporated, for assessing the entity's ability to continue as a going concern, disclosing, as applicable, matters related to going concern and using the going concern basis of accounting unless the executive board either intend to liquidate the entity or to cease operations, or have no realistic alternative but to do so.

### Auditor's responsibilities for the audit of the financial statements

Our objectives are to obtain reasonable assurance about whether the financial statements as a whole are free from material misstatement, whether due to fraud or error, and to issue an auditor's report that includes our opinion. Reasonable assurance is a high level of assurance, but is not a guarantee that an audit conducted in accordance with International Standards on Auditing (New Zealand) will always detect a material misstatement when it exists. Misstatements can arise from fraud or error and are considered material if, individually or in the aggregate, they could reasonably be expected to influence the decisions of users taken on the basis of these financial statements. A further description of the auditor's responsibilities for the audit of the financial statements is located at the XRB's website at: [https://xrb.govt.nz/Site/Auditing\\_Assurance\\_Standards/Current\\_Standards/Page8.aspx](https://xrb.govt.nz/Site/Auditing_Assurance_Standards/Current_Standards/Page8.aspx)

### Who we report to

This report is made solely to the members, as a body. Our audit has been undertaken so that we might state to the members those matters we are required to state to them in an auditor's report and for no other purpose. To the fullest extent permitted by law, we do not accept or assume responsibility to anyone other than the Institute and the members as a body, for our work, for this report, or for the opinions we have formed.

**RSM Hayes Audit**  
Auckland

27 March 2017

# PROFIT OR LOSS

FOR THE YEAR ENDED 31 DECEMBER 2016

	NOTE	2016 \$	2015 \$
<b>Operating Income</b>			
Branch Income		50,273	26,176
Conference Proceeds		568,167	869,401
CPD Income	4	451,356	394,356
Situations Vacant		128,237	129,017
Subscriptions		616,611	576,329
Quality Planning Website		39,000	44,000
Interest Received		9,514	49,519
Sundry Income		54,768	28,028
<b>Total Operating Income</b>		<b>1,917,927</b>	<b>2,116,825</b>
<b>Gross Profit</b>		<b>1,917,927</b>	<b>2,116,825</b>
<b>Less Expenses</b>			
Accountancy Fees		28,370	14,713
ACC Levies		1,195	2,026
Amortisation		1,107	2,323
Audit Fees		15,301	12,130
Bank Fees & Charges		8,952	7,865
Branch Expenditure		34,063	37,067
Computer Support & Expenses		45,561	38,056
Conference Expenses		499,277	877,541
Council Expenses		22,715	21,442
CPD Expenses	4	343,534	245,701
Depreciation		9,716	9,716
Expenses NZPI re branches		—	5,697
General Expenses		13,413	6,372
Institute Awards		15,224	14,710
Insurance		17,845	7,615
Legal Fees		36,506	22,326
Loss on Disposal		—	5
Membership Costs		10,121	7,926
Office Accommodation		59,720	55,077
Office Expense		10,634	3,902
Planning Quarterly		46,072	47,535
Photocopier Expenses (Lease)		17,476	16,264
Postage/Courier - Other		4,434	5,837
Public Relations Consulting Fees		13,387	30,603
Publications Other		8,070	11,129
Quality Planning Website		589	612
Salaries		545,706	565,075
Special Projects		4,083	8,181
Staff Training and Expenses		18,603	7,377
Subscriptions & Licences		6,977	1,596
Telephone & Tolls		20,395	10,443
Travel and Accommodation		20,325	21,291
<b>Total Expenses</b>		<b>1,879,504</b>	<b>2,119,013</b>
<b>Net Profit (Loss) Before Taxation</b>		<b>38,423</b>	<b>(2,188)</b>
<b>Taxation and Adjustments</b>			
Income Tax Expenses		—	5,764
<b>Total Taxation and Adjustments</b>		<b>—</b>	<b>5,764</b>
<b>Net Profit (Loss) for the Year</b>		<b>38,423</b>	<b>(7,952)</b>

# BALANCE SHEET

AS AT 31 DECEMBER 2016

	NOTE	2016 \$	2015 \$
<b>Current Year Earnings</b>			
Retained Earnings		926,940	934,892
Current Year Earnings		38,423	(7,952)
<b>Total Current Year Earnings</b>		<b>965,364</b>	<b>926,940</b>
<b>Assets</b>			
<b>Current Assets</b>			
Bank - Cheque Account		115,705	163,041
Bank - ECC		14,745	–
Term Deposits		526,559	526,559
Branch Bank Accounts		67,852	80,068
Branch Bank Term Deposits		172,066	135,694
Trade Debtors		14,475	16,184
Sundry Debtors		1,659	37,856
Income Tax Receivable		5,168	7,472
GST Receivable		38,205	38,205
Interest Accrual		15,778	–
Prepayments		59,208	26,122
<b>Total Current Assets</b>		<b>1,022,685</b>	<b>1,031,202</b>
<b>Non-Current Assets</b>			
Property, Plant & Equipment	3	50,177	58,628
<b>Total Non-Current Assets</b>		<b>50,177</b>	<b>58,628</b>
<b>Total Assets</b>		<b>1,072,862</b>	<b>1,089,830</b>
<b>Liabilities</b>			
<b>Current Liabilities</b>			
Income in Advance		10,750	23,132
Sundry Creditors & Accruals		73,229	101,149
Trade Creditors		23,519	38,610
<b>Total Current Liabilities</b>		<b>107,498</b>	<b>162,890</b>
<b>Total Liabilities</b>		<b>107,498</b>	<b>162,890</b>
<b>Net Assets</b>		<b>965,364</b>	<b>926,940</b>

Approved on behalf of the Board Executive:

Treasurer



Date: 24/3/2017



# STATEMENT OF CHANGES IN EQUITY

FOR THE YEAR ENDED 31 DECEMBER 2016

	2016 \$	2015 \$
<b>Equity</b>		
<b>Opening Balance</b>	<b>926,940</b>	<b>934,892</b>
<b>Increases</b>		
Profit/(Loss) for the Period	38,423	–
<b>Total Increases</b>	<b>38,423</b>	<b>–</b>
<b>Decreases</b>		
Loss for the Period	–	7,952
<b>Total Decreases</b>	<b>–</b>	<b>7,952</b>
<b>Total Equity</b>	<b>965,364</b>	<b>926,940</b>

# NOTES TO THE FINANCIAL STATEMENTS

FOR THE YEAR ENDED 31 DECEMBER 2016

## Reporting Entity

New Zealand Planning Institute Incorporated is an incorporated society, under the Incorporated Societies Act 1908.

## Business

The principal activity is that of an incorporated body representing the professional planners in New Zealand. The Society represents the planners interest in the furtherance of planning, practice, maintenance of professional standards, dissemination of planning information and attending to the welfare of members.

## Basis of Preparation

These financial statements are special purpose financial statements prepared in accordance with the following policies the board consider appropriate. The special purpose financial statements are prepared solely for the purpose of providing financial information about the society to the members.

## Historical Cost

These financial statements have been prepared on a historical cost basis. The financial statements are presented in New Zealand dollars (NZ\$) and all values are rounded to the nearest NZ\$, except when otherwise indicated.

## Specific Accounting Policies

The following specific accounting policies which materially affect the measurement of the Statement of Profit & Loss and Balance Sheet have been applied:

### (a) Revenue Recognition

Revenue is recognised to the extent that it is probable that economic benefit will flow to the entity and that revenue can be reliably measured. For CPD income, the revenue is recognised when the course is held with related fees and expenses deferred and recognised as income in advance and prepayments respectively.

### (b) Trade Receivables

Trade Receivables are recognised at estimated realisable value.

### (c) Property, Plant & Equipment and Investment Property

Property, plant and equipment is recognised at cost less aggregate depreciation. Historical cost includes expenditure directly attributable to the acquisition of assets, and includes the cost of replacements that are eligible for capitalisation when these are incurred. All other repairs and maintenance are recognised as expenses in the Statement of Financial Performance in the financial period in which they incurred.

Depreciation has been calculated using the maximum rates permitted by the Income Tax Act 2007. The following estimated depreciation rates/useful lives have been used:

Office Equipment 9 - 80.4%

Website Costs 48 - 60%

Leasehold Improvements 11.4 - 20%

Gains and losses on disposal of fixed assets are taken into account in determining the operating result for the year.

### (d) Income Tax

Income tax is accounted for using the taxes payable method. The income tax expense recognised in the Statement of Profit & Loss is the estimated income tax payable in the current year, adjusted for any differences between the estimated and actual income tax payable in prior years. The Society has taken advantages of the \$1,000 deduction permissible for incorporated societies and is not taxed on income or expenses in relation to members.

### (e) Goods and Services Taxation (GST)

Revenues and expenses have been recognised in the financial statements exclusive of GST, except that irrecoverable GST input tax has been recognised in association with expenses to which it relates. All items in the Balance Sheet are stated exclusive of GST except for receivables and payables which are stated inclusive of GST.

### (f) Changes in Accounting Policies

There have been no changes in accounting policies. All policies have been applied on a basis consistent with those from previous financial statements.

### (g) Operating lease

Operating lease payments, where the lessors effectively retain substantially all the risk and benefits of ownership of the leased items, are recognised as an expense in profit or loss on a straight line basis over the lease term.

## Audit

These financial statements have been subject to audit, please refer to the Auditor's Report.

# NOTES TO THE FINANCIAL STATEMENTS

FOR THE YEAR ENDED 31 DECEMBER 2016

	2016 \$	2015 \$
<b>1. Auditors' Remuneration</b>		
Audit Fees	15,301	12,130
<b>Total Auditors' Remuneration</b>	<b>15,301</b>	<b>12,130</b>
<b>2. Tax Reconciliation</b>		
Net Profit/ (Loss) Before Tax	38,423	(2,188)
<b>Total Permanent Differences</b>		
Less Income Received from Members	(1,306,965)	(1,557,750)
Add Expenditure Related to Members	1,203,454	1,621,029
Less Exemption for Non-Profit Organisation	(1,000)	(1,000)
Tax Losses approved by the IRD	–	(64,889)
<b>Total Total Permanent Differences</b>	<b>(104,511)</b>	<b>(2,610)</b>
<b>Total Timing Differences</b>		
Holiday Pay Last Year	(40,627)	(15,243)
Holiday Pay This Year	28,325	40,627
Audit Fees Accrual Last Year	(10,000)	–
Audit Fees Accrual This Year	12,000	–
Holiday Pay within 63 days This Year	(2,000)	–
Holiday Pay within 63 days Last Year	2,000	–
<b>Total Timing Differences</b>	<b>(10,302)</b>	<b>25,384</b>
Taxable Income	(76,390)	<b>20,586</b>
Tax Expense at 28%	–	5,764
<b>Losses Carried Forward</b>	<b>(76,390)</b>	–

## 3. Property, Plant & Equipment

Property, Plant & Equipment 2016 / \$	Cost	Depreciation Charged	Accumulated Depreciation	Closing Book Value
Office Equipment	\$87,234	5,928	72,398	14,836
Website Costs	48,592	1,208	47,283	1,308
Leasehold Improvements	48,176	3,818	14,144	34,031
<b>Total Property, Plant &amp; Equipment</b>	<b>184,002</b>	<b>10,954</b>	<b>133,825</b>	<b>50,177</b>
<b>Property, Plant &amp; Equipment 2015 / \$</b>				
Office Equipment	84,733	5,464	66,472	18,261
Website Costs	48,592	2,323	46,075	2,517
Leasehold Improvements	48,176	4,252	10,326	37,850
<b>Total Property, Plant &amp; Equipment</b>	<b>181,501</b>	<b>12,039</b>	<b>122,873</b>	<b>58,628</b>



	2016 \$	2015 \$
<b>4. Income - Continuing Professional Development</b>		
Gross Income Member	287,015	234,551
Gross Income Non-Member	164,341	154,805
<b>Total Income</b>	<b>451,356</b>	<b>394,356</b>
less: Related Expenses Member	(218,451)	(153,391)
Related Expenses Non-Member	(125,083)	(92,310)
<b>Total Related Expenses</b>	<b>(343,534)</b>	<b>(245,701)</b>
<b>Total Income</b>	<b>107,822</b>	<b>68,655</b>
<b>5. Capital Expenditure Commitments</b>		
The society has no capital commitments as at 31 December 2016 (2015: Nil).		
<b>6. Obligations Under Leases</b>		
<b>Building</b>		
Current	45,680	36,878
Non-Current	74,230	109,585
<b>Total Building</b>	<b>119,910</b>	<b>146,463</b>
<b>Equipment</b>		
Current	18,847	13,182
Non-Current	61,388	43,939
<b>Total Equipment</b>	<b>80,235</b>	<b>57,121</b>
<b>7. Contingent Liabilities</b>		
At balance date contingent liabilities have been estimated at nil (2015, nil).		
<b>8. Related Party Disclosures</b>		
Board members and relatives of board members were involved in conducting some of the CPD courses offered with the New Zealand Planning Institute Incorporated during the course of the year. These transactions were performed at an arms length. Board members as members of the institute and pay fees consistent with the other members and the related benefits.		
<b>9. Branches</b>		
The financial statements include the income, expenditure, bank funds and deposits of the New Zealand Planning Institute Incorporated branches.		

# MEMBERSHIP GROWTH IN 2016

Over the past several years NZPI has enjoyed steady growth in its membership. On average the Institute's membership base has grown by around 3 – 4% each year.

2016 proved to be another year of membership growth, for the first time in our history we now have over 2,300 members, a pleasing result for the year.

---

***The NZPI Board and staff wish to welcome all new members, and commit to providing you with the support and services you need to develop your own position as a professional planner in New Zealand.***

---



## WELCOME TO ALL NEW NZPI MEMBERS

---

Alexandra Strawbridge

Alia Cederman

Alister Hartstone

Andrew Dooney

Ashlie Carlyle

Caroline van Halderen

Christina Robertson

Claire Kelly

Corinne Frischknecht

Cushla Salt

Daniel Shao

David Moule

Deborah Lee Sang

Elizabeth Devery

Emma Howie

Evan Cook

Felicity Foy

Georgina McPherson

Iain White

Jane Anderson

Jason Tickner

Jaye Michalick

Julia Lovelock

Jym Clark

Kim Banks

Kylie McLaughlin-Brown

Louise Allwood

Louise Wilson

Manini Hallikeri

Marian Dissanayake

Maurice Roers

Melissa McGrath

Michael (Mike) Vincent

Michelle Kemp

Mike Yu

Murray Brass

Murray McDonald

Nicola Foran

Patrick Buckley

Peter Kensington

Roger Wiffin

Sarah McCarter

Sarah McCarthy

Sherilyn Hinton

Susannah Goble

Tammy Wooster

Theresa Burkhardt

Tim Joll

Wayne Smith



NEW ZEALAND PLANNING INSTITUTE 2016  
MEMBERSHIP  
DIRECTORY



## Associate

Clare Abbiss  
 Anna Alexander  
 Matthew Allan  
 Bridget Allen  
 David Allen  
 Jessica Allpress  
 Caroline Ammundsen  
 Conrad Anderson  
 Robert Anderson  
 Helen Andrews  
 Ruth Andrews  
 Mark Apeldoorn  
 Joshua Arbury  
 Mark Arbutnot  
 Maheeka Ariyapperuma  
 Heather Ash  
 Helen Atkins  
 Ravi Teja Ayyagari  
 Edita Babos  
 Matthew Bacon  
 Arlene Baird  
 Jeff Baker  
 Remo Bangi  
 Mishka Banhidi  
 Coralie Barker  
 Timothy Barnard  
 Jonathan Barrett  
 Lorelle Barry  
 Kathleen Barry-Piceno  
 Ezra Barwell  
 Rachel Batchelor  
 Helen Bealey  
 Jonathan Begg  
 Cathy Begley  
 Mathew Bell  
 Stacey Bell  
 Russell Benge  
 James Berghan  
 Natasha Berkett  
 Susanne Bernsdorf Solly  
 Simon Berry  
 Paul Beverley  
 Sean Bignell  
 Richard Bigsby  
 Kim Bird  
 Phillip Blackwood  
 Stephanie Blick  
 Anastasia Blignaut  
 David Boersen  
 Neda Bolouri  
 Richard Brabant  
 Dirk Brand  
 Carel (Wayne) Bredemeijer  
 Robyn Broadhurst  
 Stephen Brown  
 Catherine Brunet  
 Quentin Budd  
 Catherine Buick  
 Kathleen Bunting  
 Georgia Burborough  
 Jesse Burgess  
 Cole Burmester  
 Trudi Burney  
 Jeremy Butler  
 Jennifer Caldwell  
 Helen Caley  
 Andy Carr  
 Victoria Caseley  
 Kelly Cattermole  
 Reza Chalabianlou  
 Louise Chauhan  
 Christine Cheyne  
 Simon Childs  
 Stephanie Chin  
 Judith Chittock  
 Emma Christmas  
 Eldad Collins  
 Julie Comfort  
 Matt Conway  
 Glen Cooper  
 Ian Cowper  
 Aileen Crow  
 Allan Cubitt  
 Rowena Cudby  
 Liam Dagg  
 Clare Dale

Sarah Davidson  
 Craig Davison  
 Neeta Deo  
 Hannah Divehall  
 Malc Donald  
 Damienne Donaldson  
 Micah Donaldson  
 Wayne Donovan  
 Nico Donovan-Pereira  
 Alan Dormer  
 William Dorset  
 Jocelyn Douglas  
 Brendan Doyle  
 Sarah Duffy  
 Richard Duirs  
 Maaike Duncan  
 Alex Dunn  
 Michael Dunphy  
 Monique Dyer  
 Scott Edgar  
 Rachel Elliot  
 Kellie Ellis  
 Geoffrey England  
 Mark Ensor  
 Timothy Ensor  
 Nicola Etheridge  
 Sven Exeter  
 Douglas Fairgray  
 Richard Falconer  
 Sue-Ellen Fenelon  
 John Ferguson  
 Margaret Ferguson  
 Andrew Fitzgerald  
 Tony Fraser  
 Craig Fredrickson  
 Kristina Free  
 Paul Freeland  
 Michele Frey  
 Peter Fuller  
 Jo Fyfe  
 Jeannie Galavazi  
 Wendy Gallagher  
 Xiaoxiao (Megan) Geng  
 Mark Georgeson  
 Kerstin Ghisel  
 David Gibson  
 Brett Giddens  
 Sam Gifford  
 Rosanne Given  
 Dean Glen  
 Susan (Sue) Godbaz  
 Fiona Gordon  
 Kate Graham  
 Jonathan Green  
 Nicola Green  
 Simon Greening  
 Ashleigh Grose  
 Pauline Hadfield  
 Joseph Hale  
 Anthony Hall  
 Garrett Hall  
 Michael Hall  
 Daniel Hames  
 Daniel Hamilton  
 Sarah Hamilton  
 David Hampson  
 Natalie Hampson  
 Rochelle Hardy  
 David Harford  
 Richard Harkness  
 Brett Harries  
 Carissa Harris  
 Joanna Hart  
 James Hassall  
 Barry Hayes  
 Lisa Hayes  
 Philip Heffernan  
 Helen Hicks  
 Stacey Hikairo  
 Mary Hill  
 Donna Hills  
 Rebecca Holden  
 Jemma Hollis  
 Jessica Hollis  
 Russell Hooper  
 Charlie Hopkins  
 Karyn Hopkins  
 Stephen Howard

Ruth Hudson  
 Alisha Huijs  
 Emily Hunt  
 Samuel (Sam) Hurley  
 Kirsty Huxford  
 Ian Hyde  
 Rebecca Inwood  
 Nadia Jefferis  
 Carl Jenkins  
 Anna Johnson  
 Helen Johnson  
 Dyanna Jolly  
 Cameron Jones  
 Jason Jones  
 Karen Joubert  
 Jennifer Joynt  
 Karen Jury  
 Christina Kaiser  
 Amos Kamo  
 Andrew Kantor  
 Simon Karl  
 Sharyn Kashyap  
 Te Pio Kawe  
 Elmira Kazemzadehvatan  
 Leon Keefer  
 Nathan Keenan  
 Hamish Keown  
 Gerry Kessels  
 Nicola Kirby  
 Andrew Kirk  
 Stephanie Kirk  
 Christopher Kissling  
 Rae-Anne Kurucz  
 Warren Ladbroke  
 Jennifer Lancashire  
 Nicholas Lau  
 Michael Lawrie  
 Katrina Lee  
 Penelope Lemon  
 Peter Linde  
 Matthew Lindenberg  
 Kirstyn Lindsay  
 Brigid (Biddy) Livesey  
 Kim Logan  
 Jeffrey Loo  
 William Loutit  
 Adrian Low  
 Anna Lunjevich  
 James Luty  
 Philippa Lynch  
 Joao Machado  
 Anna Mackenzie  
 Andrew MacLennan  
 Warren MacLennan  
 Kathryn Maguire  
 Victoria Majoor  
 Tabitha Manderson  
 Thomas Marchant  
 Mathieu Marois  
 Andrea Marshall  
 Corinne Marti  
 Julia Masters  
 Fiona Matthews  
 Steven May  
 Rachelle McBeth  
 Nicholas McCool  
 Michael McEnaney  
 Andrew McFarlane  
 Quinn McIntyre  
 Harriet McKee  
 Claire McKeever  
 Katherine McKenzie  
 Portia McKenzie  
 Matthew McLachlan  
 Anna McLellan  
 Renee McVillan  
 Jeffrey McNeill  
 Anne McNoe  
 Fraser McNutt  
 Andrew Mead  
 Kobus Mentz  
 Andrew Metherell  
 Shanani Miles  
 Tracey Miller  
 Greg Milner-White  
 Shelley Milosavljevic  
 James Minehan  
 Christine Mitchell

David Mitchell  
 Vrinda Moghe  
 Gareth Moran  
 Louis Morell  
 Craig Moriarty  
 Kate Morrissey  
 Tracey Morse  
 Greg Morton  
 Ashwita Murphy  
 Johnina (Nina) Murphy  
 Stephanie Murphy  
 Jane Murray  
 Victoria Mylchreest  
 Sandhira Naidoo  
 Sally Neal  
 Jacob Neaves  
 Luke Nelson  
 David Newey  
 Lynley Newport  
 Hoda Nozari  
 Paul O'Brien  
 Carly O'Connor  
 Claudine Osborne  
 Malory Osmond  
 Katherine Overwater  
 Daryl Page  
 Baylee Pakau  
 Hannah Palmer  
 Natalie Palmer  
 Brianna Parkinson  
 Megan Parsons  
 Rebecca Partridge  
 Patricia Paschke  
 Scott Paton  
 Hamish Peacock  
 Janine Pearson  
 Stuart Penfold  
 Rachel Penney  
 Claire Perkins  
 Claire Phillips  
 Bryce Phillipson  
 Olivia Philpott  
 David Phizacklea  
 Dylan Pope  
 Daniel Pouwels  
 Anna Price  
 David Pullar  
 Karla Putt  
 Erin Quin  
 Andrew Rabbidge  
 Caroline Rachlin  
 Mhairi Rademaker  
 Marius Rademeyer  
 Anne-Marie Radford  
 David Randal  
 Christopher Randell  
 Lindsey Rea  
 Matthew Read  
 Emma Reed  
 Dory Reeves  
 Janet Reeves  
 Elisabeth Resl  
 Trudy Richards  
 Helena Rigg  
 Susan Robb  
 Mark Roberts  
 Rebecca Robertson  
 Melissa Rodger  
 Scott Rose  
 Tanya Running  
 Natalie Rutland  
 Stuart Ryan  
 Lillie Sadler  
 Summer Salmon  
 Jessica Samuels  
 Peter Savage  
 John Scheele  
 Nicola Scott  
 Vanessa Scott  
 Mike Searle  
 Amy Selvaraj  
 Sonya Seutter  
 Hamed Shafiee  
 Martin Sharp  
 Niamh Sheehy  
 Hera Smith  
 Ruth Smith  
 Matthew Spiro

Kristin Spyve  
 Joanne Stapleton  
 Kathryn Stapleton  
 Rebecca Steenstra  
 Campbell Stewart  
 Louise Strogen  
 Steven Summers  
 Cameron Sunde  
 Nicholas Swallow  
 Mark Swartz  
 Christine Tarr  
 Belinda Taurua-Hill  
 Alicia Taylor  
 Emma Taylor  
 Neil C Taylor  
 Graham Thomas  
 Paul Thompson  
 Lizzie Thomson  
 Daniel Thorne  
 Vicki Toan  
 Mychelle Tomsett  
 Rachel Townrow  
 Katie Treadaway  
 Jeremy Trevathan  
 Sarah Trinder  
 Michelle Tsang  
 Lucia Tugaga  
 Warren Ulusele  
 Victoria van der Spek  
 Natalie van Looy  
 Don Vattala  
 Rebecca Vertongen  
 Mark von Dadelszen  
 Christina Walker  
 Ian Wallace  
 Pip Wallace  
 Jane Walsh  
 Timothy Walsh  
 Justin Walters  
 Bernard (Bernie) Warmington  
 Pauline Webby  
 Mark Weingarth  
 Susan Wells  
 Jason Welsh  
 Stephen West  
 Lyndon Westlake  
 Michelle Whitaker  
 Elizabeth White  
 Lauren White  
 Jarette Wickham  
 Kristen Wicks  
 Alan Wilkinson  
 Charles Wilkinson  
 Emma Williams  
 Jeremy Williams  
 Rowan Williams  
 Sarah Williams  
 Nick Williamson  
 Belinda Willis  
 Natasha Wilson  
 Amy Wilson-White  
 Gabi Wolfer  
 Andrew Wood  
 Louise Wood  
 Nicholas Woodley  
 Jacob Woodward  
 Jerome Wyeth  
 Jill Young

## Associate with Partnership

Sarah Bevin  
 Emma Brosnahan  
 John Clemo  
 Michael Morris  
 Helen Pickles  
 Joanna Shirley  
 Anna Wilkes

## Fellow

Sylvia Allan  
Leigh Auton  
John Childs  
Jenny Dixon  
Jane Douglas  
Michael Foster  
Michael Gunder  
David Hinman  
Paula Hunter  
Robert Schofield  
Ivan Thomson

## Full

Alistair Aburn  
Hanna Afifi  
Nicholas Aiken  
Elizabeth Aitken Rose  
Linda Albertyn  
Ernest Albuquerque  
Wayne Allan  
Matt Allott  
Louise Allwood  
Charlotte Almond  
Alan Anderson  
Denise Anderson  
Donald Anderson  
Hamish Anderson  
Helen Anderson  
Ree Anderson  
Thomas Anderson  
Penelope Anson  
Paul Amesen  
Mark Ashby  
Fiona Aston  
Orchid Atimalala  
Kirsty Austin  
Ella Bacher  
David Badham  
Russell Baikie  
Marc Bailly  
Bruce Baker  
Mary-Anne Baker  
Nathan Baker  
Wendy Baker  
Karl Baldwin  
Kim Banks  
Bill Barclay  
Peter Barnes  
Craig Barr  
Philip Barrett  
Jacqueline Bartley  
Aimee Barwick  
Andrew Bashford  
Craig Batchelar  
Judith Batchelor  
Mark Batchelor  
Wendy Baverstock  
Ian Bayliss  
Emma Bayly  
Simon Beale  
Rebecca Beals  
Lee Beattie  
Laurence Beckett  
Diana Bell  
Jacqueline Bell  
Janine Bell  
Karen A Bell  
Karen S Bell  
Mark Bellingham  
Mark Benjamin  
Tracy Berghan  
James Bevan  
Julie Bevan  
David Bewley  
Tanvir Bhanji  
Stephen Bigwood  
Gulab Bilimoria  
Mandy Bishop  
Jane Black  
Neil Black  
Richard Black  
Karen Blair  
Scott Blair  
Jeremy Blake  
Richard Blakey

Tom Bland  
Fiona Blight  
Ian Blundell  
Richard Bollard  
Carolyn Bonis  
Julie Boucher  
Paul Bowman  
Stuart Bracey  
Giles Bramwell  
Murray Brass  
Justine Bray  
Kylie Brayshaw  
Nicole Bremner  
Elizabeth Briggs  
Robin Britton  
Chanelle Brodie  
Jeremy Brophy  
Jeffrey Brown  
Jonathan Brown  
Marilyn Brown  
Philip Brown  
Katrina Brunton  
Nigel Bryce  
Murray Buchanan  
Patrick Buckley  
Antony Bullard  
Theresa Burkhardt  
Angelene Burn  
Owen Burn  
Aaron Burt  
Shyrel Burt  
William Burton  
Dennis Bush-King  
Craig Cairncross  
Amy Callaghan  
Romae Calland  
Murray Cameron  
David Campbell  
Michael Campbell  
Phillipa Campbell  
Lisa Capes  
Nicholas Carroll  
Anna Carter  
Janice Carter  
Jenny Carter  
John Carter  
Raewyn Catlow  
Christine Caughey  
Andrew Cave  
Crystal Chan  
Vishal Chandra  
Raymond (Kah Mun) Chang  
Edward Chapman-Cohen  
Rhys Chesterman  
Robert Chieng  
Ching (Melody) Chow  
Mark Chrisp  
Jym Clark  
Catherine Clarke  
Mark Clews  
Gillian Cockerell  
Richard N Coles  
Aaron Collier  
Andrew Collins  
Catherine Collinson  
Stephen Colson  
Colin Comber  
Philip Comer  
David Compton-Moen  
Elva Conroy  
Peter Constantine  
Evan Cook  
John Cook  
Karl Cook  
Kathryn Coombes  
Peter Coop  
Nicholas Cooper  
Dominique Cornford  
Christine Coste  
Clare Covington  
Ian Craig  
Angela Crang  
Jan Crawford  
Alastair Cribbens  
Brian Croad  
Sarah Cronwright  
Bain Cross  
Shae Crossan  
Stuart Crosswell

Andrew Cumberpatch  
Andrew Cumming  
Jonathan Cutler  
AnaMaria d'Aubert  
Maurice Dale  
James Danby  
Janet Davey  
Treena Davidson  
Evan Davies  
Keri Davis-Miller  
Cecilia Davison  
Christopher Dawson  
Sarah Dawson  
Rosalind Day  
Lindsay Daysh  
Stephen Daysh  
Russell De Luca  
Brigitte De Ronde  
Gary Deeney  
Andrew Deller  
David Derby  
Liz Devery  
Blair Devlin  
Chris Dillon  
Rachel Dimery  
Sharon Dines  
Colin Diprose  
Leonard Dissanayake  
Marian Dissanayake  
Rod Dissmeyer  
Glenda Dixon  
Gavin Donald  
Neil Donnelly  
Andrew Dooney  
Genevieve Doube  
Richard Douch  
Lee Dove  
Janette Dovey  
Sarah Dreadon  
Kathryn Drew  
Cameron Drury  
Maree Drury  
Sarah Duffell  
John Duffy  
Richard Dunbar  
Max Dunn  
Janan Dunning  
John Duthie  
Mark Dyer  
Catriona Eagles  
Joanne Easterbrook  
Anna Eatherley  
James Ebenhoh  
Grant Eccles  
John Edmonds  
Hywel Edwards  
Sarah Edwards  
Peter Eman  
David Falconer  
Janine Fallwell  
Herbert Familton  
Brett Farquhar  
Ben Farrell  
Tim Faulkner  
Matthew Feary  
Louise Feathers  
Andrew Feierabend  
Christopher Ferguson  
Shirley Ferguson  
Jonathan Ferguson-Pye  
Tim Fergusson  
Alex Findlay  
Robyn Fisher  
Lynley Fletcher  
Stewart Fletcher  
Melanie Foote  
Nicola Foran  
David Forrest  
Julia Forsyth  
Adam Fort  
Felicity Foy  
Adam Fraser  
Renee Fraser-Smith  
Claire Freeman  
Chris Freke  
Keith Frentz  
Craig Friedel  
James Fuller  
Jenny Fuller

Tsz Chiu (T.C.) Fung -  
Stanley Feng  
Megan Gaffaney  
Richard Gard'ner  
Anna Gardiner  
Mark Geddes  
Hester Gerber  
Richard Gibbs  
Ken Gimblett  
Bruce Glavovic  
Sarah Glen  
Susannah Goble  
Steve Goeldner  
Paula Golsby  
Jennifer Goulding  
Sean Grace  
Robert Graham  
Nicholas Grala  
Joseph (Joe) Gray  
Ian Greaves  
Gareth Green  
Jennifer Green  
Martin Green  
Emily Greenberg  
Claire Gregory  
James Griffin  
Jenny Grimmett  
Michelle Grinlinton-Hancock  
Kerry Grundy  
Andrew Guerin  
Phil Gurnsey  
Andrew Gysberts  
Sarah Haarhoff  
David Haines  
Peter Hall  
Rod Halliday  
Bruce Halligan  
Manini Hallikeri  
Elizabeth Halsted  
Brent Hamilton  
Helen Hamilton  
Andrew Hammond  
Christopher Hansen  
Colin Hardacre  
Kim Hardy  
Amanda Harland  
Jim (Philip) Harland  
Andrea Harris  
Susan Harris  
Timothy Harris  
Wendy Harris  
Jenny Harrison  
Patricia Harte  
Shane Hartley  
Alister Hartstone  
Stephen Havill  
Lauren Hawkins  
Bruce Hawkins  
David Hay  
Tracy Hayson  
Timothy Hegarty  
Andrew Henderson  
Ralph Henderson  
Susan Henderson  
James Hendra  
Cath Heppelthwaite  
Lance Hessel  
Jeff Hextall  
Stephen Higgs  
Gregory Hill  
Simon Hill  
Wade Hill  
Jane Hilson  
Craig Hind  
Sherilyn Hinton  
Rupert Hodson  
Brendan Hogan  
Matthew Hoggard  
Matthew Holder  
Ross Holland  
Bryce Holmes  
Mary Honey  
Brett Hood  
James Hook  
David Hookway  
Kathryn Hooper  
Lesley Hopkins  
Abu Hoque  
Chris Horne

Bevan Houlbrooke  
Keith Hovell  
Emma Howie  
Jenny Hudson  
Glen Hughes  
Katja Huls  
John Hutchings  
Alyson Hutton  
Gavin Ide  
Ben Inger  
Aaron Ingoo  
Poul Israelson  
Alice Iuli-Tay  
David Jackson  
Letitia Jarrett  
Sarah Jenkin  
Lesley Jenkins  
Richard Jenkins  
Anna Jennings  
Campbell Jensen  
Alex Jepsen  
Alastair Jewell  
Juliet Johnson  
Peter Johnson  
Richard Johnson  
Pam Johnston  
Rachelle Johnston  
Angela Jones  
Morgan Jones  
Paul Jones  
Susan O Jones  
Bryce Julian  
Bruce Junor  
Megan Justice  
Barry Kaye  
Evan Keating  
Claire Kelly  
Terrena Kelly  
Gavin Kemble  
Colin Kemeys  
Jeffrey Kemp  
Michelle Kemp  
Martin Kennedy  
Jillian Kennemore  
Toni Kennerley  
Peter Kensington  
Steven Kerr  
Patrick Killalea  
Monique Kimber  
Anna Maria King  
Geoffrey King  
Stuart Kinnear  
Yvette Kinsella  
Murray Kivell  
Peter Kloosterman  
Gregory Knell  
Amanda Kong  
Charlene Kowalski  
Veena Krishna  
Karyn Kurzeja  
Vijay Lala  
David Lamason  
Tracey Lamason  
Nathaniel Landingin  
Cherie-Ann Lane  
Campbell Larking  
Emma Larsen  
Nicola Laurenson  
Adam Lawrence  
Graeme Lawrence  
Ian Leary  
Greg Lee  
Deborah Lee Sang  
Hugh Leersnyder  
Raewyn Legge  
Mark Leggett  
Aaron Leith  
Amanda Leith  
Tim Lester  
Maciej (Mitch) Lewandowski  
Anna Lewis  
Joanne Lewis  
Annejo Liang  
Rob Loeffering  
Mark Lile  
Brent Limmer  
Alice Lin  
Amelia Linzey  
Claire Liousse

Dougal List  
 Rebecca Lloyd  
 Steven Lloyd  
 Karen Long  
 Cushla Loomb  
 Gail Lorier-May  
 Alastair Lovell  
 Fiona Low  
 James Low  
 Kewwa Low  
 Paul Lowe  
 Craig Lunn  
 Donald Lyon  
 Jane Macartney  
 Tony MacColl  
 Roger MacCulloch  
 Barry MacDonell  
 Dawne Mackay  
 John Mackay  
 Kate Mackness  
 John MacLachlan  
 Andrew MacLeod  
 Burnette Macnicol  
 David Macpherson  
 Kate Madsen  
 Craig Magee  
 David Makani  
 Ella Makin  
 Craig Mallett  
 John Mandemaker  
 Steve Markham  
 Lee Marr  
 Phillip Marshall  
 Phillip Martelli  
 Kathryn Martin  
 Blair Masefield  
 Alan Matheson  
 Peter Match  
 Hirini Matunga  
 Tracey-Lee May  
 Ian Mayhew  
 Ian McAlley  
 Stephen McArthur  
 Sonya McCall  
 Graeme McCarrison  
 Gerard McCarten  
 Andrew McCarthy  
 Sarah McCarthy  
 Robert McClean  
 Rachel McClung  
 David McCorkindale  
 Christian McDeane  
 Philip McDermott  
 Murray McDonald  
 Roger McDonald  
 Damien McGahan  
 Craig McGarr  
 Melissa McGrath  
 Patrick McHardy  
 Sherie McHardy  
 Philip McKay  
 Angus McKenzie  
 Bayard McKenzie  
 Stewart McKenzie  
 Kylie McLaughlin-Brown  
 Helen McLean  
 Ainsley McLeod  
 Iain McManus  
 Bill McMaster  
 Julie McMinn  
 Heather McNeal  
 Georgina McPherson  
 Fraser McRae  
 Luke McSorley  
 John McSweeney  
 David Mead  
 Lisa Mein  
 Jaye Michalick  
 Franica Mikulicic  
 Caroline Miller  
 Emma Miller  
 Malcolm Miller  
 Richard Miller  
 Phil Mitchell  
 Ross Moffatt  
 Elizabeth Moncrieff  
 Helen Montgomery  
 Alice Morris  
 Glenn Mortimer

Russell Mortimer  
 Barry Mosley  
 Alan Moss  
 David Moule  
 David Mountfort  
 Neil Mumby  
 Ian Munro  
 David Murphy  
 Daniel Murray  
 Kim Nathan  
 Stefanus Naude  
 David Needham  
 Peter Neeve  
 Alison Newbald  
 Daniel Newcombe  
 Ann Nicholas  
 Lawrence Njoku  
 Brad Nobilo  
 Matthew Norwell  
 Denis Nugent  
 Lauren O'Byrne  
 Mary O'Callahan  
 Kylie O'Dwyer  
 Luke O'Dwyer  
 Russell O'Leary  
 Suzanne O'Rourke  
 Brenda O'Shaughnessy  
 Helen O'Shaughnessy  
 John Oliver  
 Helen Oram  
 Brett Osborne  
 Greg Osborne  
 Richard Osborne  
 Jeffrey Page  
 Matiu Park  
 Jennifer Parsons  
 Michael Parsonson  
 Ewen Patience  
 Megan Patrick  
 Murray Patterson  
 Dave Paul  
 Carey Pearce  
 Marguerite Pearson  
 Nadine Perera  
 Hayes Perkins  
 Rebecca Perrett  
 Michele Perwick  
 Belinda Petersen  
 Reuben Peterson  
 Richard Peterson  
 Gregory Phillips  
 Peter Phillips  
 Keith Phyn  
 Aruna Pillay  
 Nesh Pillay  
 Rachel Pinn  
 Penelope Pirrit  
 Nicholas Pollard  
 Greg Pollock  
 Bryce Pomfrett  
 Namouta Poutasi  
 Graham Power  
 Claire Price  
 Samuel Price  
 Rachael Pull  
 Andrew Purves  
 Brian Putt  
 Tony Quickfall  
 Gary Rae  
 Christine Ralph  
 Deepak Rama  
 Rajiv Raman  
 Vanita Ranchhod  
 Neil Rasmussen  
 Peter Rawson  
 Catherine Reaburn  
 Peter Reaburn  
 Marilyn Regnault  
 Phillip Reid  
 Hamish Rennie  
 Jane Rennie  
 Ben Rhodes  
 Catherine Richards  
 Tania Richmond  
 Andrea Rickard  
 Richard Ritsma  
 Leigh Robcke  
 Graeme Roberts  
 Nick Roberts

Shane Roberts  
 Christina Robertson  
 Michael Robinson  
 Daniel Rodie  
 Maurice Roers  
 Paula Rolfe  
 Kimberley Rolton  
 Katrina Roos  
 Joanna Ross  
 Mark Ross  
 Deborah Rowe  
 Miles Rowe  
 Grant Russell  
 Paul Ryan  
 Nicola Rykers  
 Douglas Sadlier  
 Donald Sangster  
 Ueligitone Sasagi  
 James Saunders  
 Wendy Saunders  
 Nathanael Savage  
 Norbert Schaffoener  
 Michele Schitko  
 Robert Schlotjes  
 Josie Schroder  
 Robert Scott  
 Christopher Scrafton  
 Kim Seaton  
 Nicola Sedgley  
 Kelly Seekup  
 Jaimee Semmens  
 David Serjeant  
 Julie-Anne Shanks  
 Daniel Shao  
 Ian Shapcott  
 Craig Sharman  
 Deryck Shaw  
 Laurence Sherriff  
 Eryn Shields  
 Heather Sinclair  
 Karyn Sinclair  
 Timothy Sinclair  
 Dharendra Singh  
 Sukhdeep Singh  
 Ian Smallburn  
 Berin Smith  
 Chris Smith  
 Melinda Smith  
 Vaughan Smith  
 Maximus Smitheram  
 Jarrod Snowsill  
 Paul Sousa  
 Janine Sowerby  
 Andrew Sowersby  
 Graham Spargo  
 Suzanne Speer  
 Doug Spittle  
 Fiona Sprott  
 Kathryn St Amand  
 Mark St Clair  
 Debra Stan-Barton  
 Bill Stevens  
 Tanya Stevens  
 Mark Stevenson  
 Sarah Stevenson  
 Carol Stewart  
 Elizabeth Stewart  
 Alison Stilwell  
 Brendon Stone  
 Alexandra Strawbridge  
 Stephanie Styles  
 Dayle Sutherland  
 Caleb Sutton  
 Jamie Swan  
 Gina Sweetman  
 Piotr Swierczynski  
 Ken Swinney  
 Darryl Sycamore  
 Alistair Talbot  
 Jeremy Talbot  
 Mark Tamura  
 Graham Taylor  
 Louise Taylor  
 James Taylor-Cyphers  
 Glenn Teal  
 Kirsten Tebbutt  
 Andrew Tester  
 Michael Theelen  
 Paul Thomas

Gerard Thompson  
 Michelle Thompson-Fawcett  
 Emily Thomson  
 Karleen Thomson  
 Jason Tickner  
 Allison Tindale  
 Jacqueline Todd  
 David Totman  
 Uriwryn Trebilco  
 Ken Tremaine  
 Chloe Trenouth  
 Amber (Sze Wan) Tsang  
 Cozy Tsui  
 Michael Tucker  
 Christopher Turbott  
 Diane Turner  
 Richard Turner  
 Cameron Twigley  
 Matthew Twose  
 Jennifer Valentine  
 Suzanne Vallance  
 Caroline van Halderen  
 Hans Van Kregten  
 Alexander van Son  
 Peter Vari  
 Garry Venus  
 Tim Vial  
 Mark Vinall  
 Jennifer Vince  
 Mike Vincent  
 Carey Vivian  
 Melaina Voss  
 Greg Vossler  
 Paul Waanders  
 Brian Waddell  
 Louise Wai  
 David Wallace  
 Christopher Walsh  
 Theresa Walsh  
 Sacha Walters  
 Brian Warburton  
 Jason Ward  
 William Wasley  
 Alan Watson  
 William Watt  
 Lynda Weastell-Murchison  
 Peter Webb  
 Elizabeth Wells  
 Hamish Wesney  
 Andrew Wharton  
 Alistair White  
 Iain White  
 David Whitney  
 Pauline Whitney  
 Todd Whittaker  
 Duncan Whyte  
 Jane Whyte  
 Paul Whyte  
 Roger Wiffin  
 Lahiru Wijewardhana  
 Andrew Wilkinson  
 Linley Wilkinson  
 Roger Willard  
 Euan Williams  
 Scott E Williams  
 Andrew Willis  
 Gerard Willis  
 Robert Willis  
 Laura Willoughby  
 Kaylee Wilson  
 Paul Wilson  
 Alina Wimmer  
 Lolisi Wolfgramm  
 David Wong  
 Kevin Wong-Toi  
 Michael Wood  
 Clare Wooding  
 Tammy Wooster  
 Alan Worthington  
 Carolyn Wratt  
 David Wren  
 Stephen Wynne-Jones  
 Antony Yates  
 Simon Yates  
 Yu Yi  
 Jo Young  
 Sabrina Young  
 Adrienne Young-Cooper  
 Mike Yu

Sean Zieltjes  
 Joseph Zou

## Full with Partnership

Jane Anderson  
 Justine Ashley  
 Karen Baverstock  
 Kevin Bligh  
 Matt Bonis  
 Terence Boylan  
 Andrea Brabant  
 Jennifer Carvill  
 Alia Cederman  
 Dean Chrystal  
 Jonathan Clease  
 Samuel Flewellen  
 Pamela Gare  
 Timothy Grace  
 Reuben Hansen  
 Timothy Joll  
 Julia Lovelock  
 Wendy Macdonald  
 Sarah McCarter  
 Robert Nixon  
 Shannon Richardson  
 Marje Russ  
 Manea Sweeney  
 Carmen Taylor  
 Jane West

## Graduate

Daisy Ager  
 Timothy Anderson  
 Jade Ansted  
 Keegan Aplin-thane  
 Ethan Archer  
 Ben Baird  
 Briar Belgrave  
 Victoria Bell  
 Myaan Bengosi  
 Courtney Bennett  
 Amy Beran  
 Scott Bicknell  
 Carlo Botha  
 Cameron Brooks  
 Ryan Brosnahan  
 Tania Bryant  
 Sarah Burgess  
 Grace Burman  
 Alice Burnett  
 Michelle Burns  
 Luke Carey  
 Amber Carter  
 Michelle (Lok Yan) Chan  
 Boya Chen  
 Tom Chi  
 Harry Choi  
 Thomas Christie  
 Anthea Clarke  
 Makarena Dalton  
 Dwayne Daly  
 Michaela Davidson  
 Thushan Dodampegamage  
 Predrag Draca  
 Luke Elliott  
 Sophie Elwood  
 Michelle Fluker  
 Kyall Foley  
 Kimberley Freeman  
 Ross Gardiner  
 Stephen Gascoigne  
 Teresa George  
 Zenaída Gerente  
 Luke Gibson  
 Matthew Gouge  
 Jackson Greenwell  
 Christopher Groom  
 Andrew H C Gysberts  
 Jodie Hansen  
 John Harold  
 Bill Harrington  
 Kai Xin (Katherine) Hu  
 Tian Xu Huang  
 Tara Hurley  
 Holly Jenkins



Zoe Kamal  
Ye Kang  
Gemma Kean  
Nathan Keyte  
Ike Kleynbos  
Alice Kranenburg  
Nicholas Law  
Rachael Law  
Sophia Lee La Selle  
Teryll Lepper  
Kerryanne Lewis  
Tianhang Liu  
Xinran (Audrey) Liu  
Sophie Lord  
Shilpa Maharaj  
James Mathieson  
John McCall  
Melanie McCormick  
Tom McKnight  
Adam Mercieca  
Hannah Miln  
Shravan Miryala  
Tom Morgan  
Emma Morris  
Samuel Morrison  
Joy Morse  
Patrick Moss  
Leonie Mullions  
Masato Nakamura  
Cassandra Ng  
Grace Ng  
Daniel Nicholls  
Caitlin O'Shea  
Shirley Pang  
Kon-Woo Park  
Jessica Parulian  
Jaiman Patel  
Ashleigh Pearce  
Stuart Pearson  
Ashlee Peters  
Andrew Poon  
Jessica Rainford  
Ashley Reid  
Nickolas Renton  
Kate Richardson  
Florian Risse  
Michelle Ruske  
Kent Russell  
Anna Sanson  
Cosette Saville  
Charlotte Scottchbrook  
Michael Scott  
Daniel Shaw  
Francisca Simone  
Kelly Slater  
Tim Solomon  
Erin Stagg  
Brittney Sutherland  
Martin Swaffield  
Ashley Tan  
Sarah Tapp  
Caleb Tien  
Annamarie Townsley  
Yuto Tsuchiya  
Manasi Vaidya  
Kayla Versey  
Brendan Versluys  
Hinetaakoha Viriaere  
Melody Wang  
Qian Wang  
Kathryn Wasley  
Shannon Watson  
Grace Wilson  
Mandy Wilson  
Kristen Wing  
Kirsten Wood  
Mikayla Woods  
Emma Wright  
Jessie (Jia Qin) Xie  
John Yan  
Miao Miao Zhen

### Graduate with Partnership

Ben Murphy  
Karen Baverstock

Kevin Bligh  
Matt Bonis  
Terence Boylan  
Andrea Brabant  
Jennifer Carvill  
Alia Cederman  
Dean Chrystal  
Jonathan Clease  
Samuel Flewellen  
Pamela Gare  
Timothy Grace  
Reuben Hansen  
Timothy Joll  
Julia Lovelock  
Wendy Macdonald  
Sarah McCarter  
Robert Nixon  
Shannon Richardson  
Marje Russ  
Manea Sweeney  
Carmen Taylor  
Jane West

### Honorary

Keith Berman  
Bernard Forde  
Ronald Harvey  
Miriam Paxie  
David Sheppard  
Arnold Turner

### Intermediate

Ben Addington  
Vanessa Addy  
Lee Ah Ken  
Clive Aim  
Toakase Akoteu  
Jotham Alex  
Leah Alexander  
Brad Allen  
Kathleen Alo  
Marzan Amera  
Panjama Ampanthong  
Karl Anderson  
Kelly Andrew  
Robert Andrews  
Carine Andries  
Venessa Anich  
Bernadette Aperahama  
Cameron Aplin  
Jonathan Arlidge  
Susan Arndt  
Murray Arnold  
Sean Audain  
Danielle Bailey  
Georgia Baker  
Luke Balchin  
Simon Banks  
Anthony Barnes  
Kathryn Barnes  
Kathryn Barrett  
Meghan Barrett  
Clare Barton  
Mary Barton  
Rachael Bason  
Julia Bates  
Rose Bayes-Powell  
Jane Bayley  
Natalie Bedggood  
Andrew Beer  
Brad Bellamy  
Charlotte Belsham  
Kataraina Belshaw  
Simon Bendall  
Bethany Bennie  
Aslam Bhikoo  
David Birch  
David Bishop  
Mark Bishop  
Nicola Bishop  
Tim Blackman  
Selwyn Blackmore  
Daan Blokker  
Thijs Blokker  
Anthony Blomfield  
Suzanne Blyth  
Catherine Bonifacio

Jessica Bould  
Katie Bowdler  
Ryan Bradley  
Rochelle Braithwaite  
Beverley Bray  
Leslie Breach  
Solomon Brett  
Michael Briggs  
Gemma-Rose Brooke  
Georgia Brown  
Sarah Brownie  
Brigid Buckley  
Rishi Buggaveeti  
Robert Burgoyne  
Andrew Calder  
Keith Calder  
Antoinette Campbell  
Dougall Campbell  
Catherine Carter  
Mark Charlesworth  
Jessica Chen  
James Cheng  
Scott Cheng  
Nita Chhagan  
Amelia Ching  
Laura Christian  
Baris Chung  
Tsz-Ning Chung  
Larissa Clarke  
Sally Clarkson  
Patrick Clearwater  
Laura Clemens  
Kirsty Clement  
David Clouston  
Tony Clow  
Jarrod Colbert  
Samantha Colgan  
Ailish Collins  
Shaun Collins  
Daniel Collis  
Terry Conner  
Linda Conning  
Sara Cook  
Ross Cooper  
James Coutts  
Megan Couture  
Hamish Crawford  
Sean Crocker  
Trevor Cullen  
John Curtis  
Deanne D'souza  
Peter Daly  
Michael Dance  
Ila Daniels  
Katrina David  
Joshua Davies  
Adele Dawson  
Luka de Jong  
Farida Dean  
Megan Dever  
Lucy Deverall  
Jaime Devereux  
Christopher Donnelly  
Philip Doole  
Loek Driesen  
Jason Drury  
Perri Duffy  
Michael Duindam  
Kelly Durham  
Averyll Edgar  
Karren Edlin  
Kimberley Edmonds  
Aaron Edwards  
Hannah Edwards  
Sally Eford  
Sophie Elliott  
Katrina Ellis  
Trevor Ellis  
Courtney Ellison  
Catherine Elvidge  
Nick Endeacott  
Rebecca Eng  
Emma Ensor  
Susan Ensor  
Jennifer Esterman  
Ruth Evans  
Claire Fell  
Emma Fergusson  
Bridie Fleming

Rosie Flynn  
Bridget Ford  
Marilyn Ford  
Karen Foster  
Samuel Foster  
Abbie Fowler  
Cara Francesco  
Alison Francis  
David Francis  
Clinton Fraser  
Junitta Fretton  
Richard Frizzell  
Prue Fullerton-Smith  
Holly Gardiner  
Paul Gardiner  
Sarah Gathercole  
Alice Xinyue Ge  
Alison Geddes  
Claire Gibb  
Lisa-Maree Gibellini  
Paul Gibson  
Alex Gifford  
Brett Gilmore  
Ross Goodman  
Elizabeth Gosling  
Kelly Governor  
Nicole Gowing  
Kate Graham  
Susan Graham  
David Grant  
Katrina Gray  
David Greaves  
Brad Greening  
Ayvron Greenway  
Aaron Grey  
Haoran - Jeffrey Guo  
Aaron Hakkaart  
Eleanor Halcrow  
Kylie Hall  
Charlotte Hamilton-Pama  
Ana Hancock  
Isabel Hand  
Anna Hanson  
Stephanie Hantler  
Rereata Hardman-Miller  
Chanel Hargrave  
Paul Harrington  
Shaun Harvey  
Gemma Hayes  
Emma - Jane Hayward  
Hamish Henderson  
Joseph Henehan  
Anne Hessell  
Gen Hewett  
Elizabeth Hislop  
Sarah Ho  
Deborah Hogan  
Daniella Holschier  
Graham Hooper  
Keith Hornby  
Tara Hotop  
Hsin-Hua (Sandy) HSIAO  
Richard Hughes  
Rachelle Hui  
William Hung  
Katrina Hunt  
Sarah Hunt  
Caroline Hutchison  
Karen Inglis  
Emily Ip  
Nicola Jackson  
Rebecca Jarman  
Sisira Jayasinghe  
Joseph Jeffries  
Adam Jellie  
Lucy (Xinran) Ji  
Jethro Joffe  
Anna Johnson  
Stephanie Jowett  
Stephanie Kane  
Jasmin Kaur  
Jaydine Keenan  
Caitlin Kelly  
Matthew Kerr-Ridge  
Raheel Khan  
Finbar Kiddle  
Daniel Kinnoch  
Aidan Kirkby-McLeod  
Keita Kohere

Lana Kotze  
Anita Kulasic  
Reina Kumar  
Rikash Kumar  
Vincent Kuo  
Sheena Kwan  
Camille Ladyman  
Tommy Lai  
Jessica Laing  
Swastika Lakhan  
Joy LaNauze  
Keaton Lane  
Rhedyn Law  
Helen Lawrence  
Rhezza Layco  
Romel Layco  
Sam Le Heron  
Bronwyn Lees  
Monique Leith  
Anthony Leung  
Charlene Liew  
Fleur Lincoln  
Kerrin Lithgow  
Ying Liu  
Andrew Long  
Marie Long  
Carl Lucca  
Michael Luong  
Nick Lynch-Watson  
Tommy Ma  
Scott Macarthur  
Sarah MacCormick  
Matthew Mackay  
Kate Magill  
Raj Maharjan  
Toby Mandeno  
Jon Maplesden  
Ruth Markham-Short  
Nicole Marshall  
Katie Martin  
Andrew Mason  
Kerry Mattingly  
Alisha Maxwell  
Amy Maxwell  
Carolyn McAlley  
Antonia McClean  
Mary McConnell  
Hugh McCullough  
Jenna McFarlane  
Nicole McGhie  
Shane McGhie  
Carolyn McIntyre  
Craig McKibbin  
Clarke McKinney  
Alison McLaughlin  
Christine McMillan  
Jacqueline McNae  
Andrew McPhee  
Lucy McWilliam  
Tanya Mead  
Fiona Meldrum  
Alyce Melrose  
Lisa Miers  
Christopher Miles  
Louise Miles  
Nicole Miller  
Haylee Minoprio  
Nicole Mistal  
Jasmine Mitchell  
Tessa Mitchell  
Andrew Moore  
Claire Moore  
Amanda Moran  
Kimberley Morete  
Rachel Morgan  
Mary Muller  
Narelle Mullins  
Vincent Murphy  
Gavin Murray  
Robert Naim  
Jokaveti Nakabea Bai  
Evelyn Neal  
Michael Nielsen  
Simon O'Connor  
Jane O'Dea  
Hannah O'Kane  
Cole O'Keefe  
Ryan O'Leary

C Paul O'Shaughnessy  
Kirsty O'Sullivan  
Samantha O'Sullivan  
Sarah Oliver  
Szening Ooi  
Josephine Orange  
Benjamin Ormsby  
Heather Osborne  
David Pan  
Kay Panther Knight  
Anna Papaconstantinou  
Rebecca Parish  
William Parr  
Kate Pascall  
Gareth Pasfield  
Sunit Patel  
Heather Perring  
Jeremy Phillips  
Jessica Phillips  
Rebecca Phillips  
Rhys Phillips  
Sarah Picard  
Clare Piper  
Astrid Powell  
Ciaran Power  
Lisa Poynton  
Reginald Proffit  
Sian Pushon  
Sabrina Quarente  
Jenna Rackley  
Adele Radburnd  
Susan Rawles  
Marion Read  
Chris Rendall  
Matthew Richards  
Oliver Richards  
Philippa Riddell  
Natasha Rivai  
Sally Robins  
Sarah Robson  
Devon Rollo  
Katherine Round  
Melanie Rountree  
Marcus Roy  
Marcus Ruddock  
Rashida Sahib  
Georgia Sanders  
Rebecca Sanders  
Gemma Sands  
Steven Sanson  
Charlotte Sayer  
Kathryn Schicker  
Lorelei Schmitt  
Hamish Scott  
Sid Scull  
Jessica Severinsen  
Heather Shannon  
Rosanne Simes  
Gurv Singh  
Jamie Sirl  
Natasha Sitarz  
Wayne Wing Ho Siu  
Robert Skinner  
Suzienne Slegers  
Fiona Small  
Rory Smeaton  
Renata Smit  
Allenie Smith  
Andrea Smith  
Chloe Smith  
Janelle Smith  
Sasha Smith  
Anna Solomon  
Shifani Sood  
Marina Spasovska  
Melissa Spearman  
Janine Speedy  
Amy Spurdle  
Christopher Staite  
Alana Standish  
Stephanie Steadman  
John Stenberg  
Jacob Stenner  
Gael Stevens  
Angela Stewart  
Claire Stewart  
John Stirling  
Nathan Stocker

Kerstin Strauss  
Matt Stulen  
Stacey Swanson  
Angela Taganahan  
Judy (Hui Min) Tan  
Fion Tang  
Jun Tang  
Yasmin Tapiheroe  
Kahurangi Tapsell  
Melanie Taylor  
Nathaniel Te Pairi  
Blair Telford  
Mark Thode  
Hayley Thomas  
Rachael Thomas  
Sarah Thompson  
Campbell Thomson  
Hannah Thomson  
Simon Titter  
Michael Treacy  
Imogen Trupinic  
Kenneth Tuai  
Penelope Tucker  
Jessica Tuilaepa  
Louise van der Voort  
Anne van der Walt  
Kirsty Van Reenen  
Anita Vanstone  
Bridget Venning  
Ashleigh Vivier  
Hayden Wadams  
Brenna Waghorn  
Siani Walker  
Clare Wall Shaw  
Shannon Wallace  
Wayne Wang  
Xizheng Wang  
Natalie Webb  
Kristen Webster  
Elsa Weir  
Louise White  
Erin Whooley  
Scott Wickman  
Geoffrey Wilkinson  
Andrew Williams  
Nicola M Williams  
Sonja Williams  
Tiffany Williams  
Kirsten Williamson  
Kent Wilson  
Peter Wilson  
Timothy Wilson  
Liam Winter  
Halley Wiseman  
Fritha Witton  
Mary Wong  
Anna Woodward  
Jason Wright  
Lihua Xie  
Hui Yin  
Yeungjun Yoo  
Denise Young  
James Young  
Nardia Yozin  
Jinyu Zhou  
Rachel Zhou  
Eva Zombori

### Intermediate with Partnership

Craig Mathieson  
Rachel Purdy  
Jessica Urquhart

### Life fellow

Robert Batty  
Malcolm Douglass

### Non-active

Emily Auton  
Emily Buckingham  
Laura Buttmore  
Bruce Chapman  
Sarah FitzGerald  
Emily Grace

Kirsty Graveling  
Anna Heasley  
Tina Kalmar  
Christine Martelletti  
Rachel Pawson  
Jane Price  
Kristen Spooner  
Rebecca Sutton  
Nicola Tagiston  
Aimee Taylor  
Joanne Watts

### Overseas Associate

Graeme Drake  
Mansor Ibrahim  
Benjamin Lam  
Murray Miller  
Emma O'Neill  
Don Sorby  
Kirsty Woods

### Overseas Full

Pam Butler  
Irene Clarke  
Cheryl Cleary  
Charlotte Crack  
Henrik Dorbeck  
Adam Flynn  
Matthew Griffiths  
Keith Hall  
Kim Harding  
Grant Harris  
David Hewetson  
Lynette Hughes  
Phil Hughes  
Sarah Marshall  
Cathy McNab  
Patterson Ngwira  
Robert Peel  
Marijke Ransom  
Jo Rosier  
Christiane Sargent  
Darrell Sargent  
Mark Simpson  
Casandra Smith  
Josephine Tam  
Cameron Wallace  
Renee Whitesell

### Overseas Intermediate

Clifford Chai  
Heleana Crombie  
Claire Gray  
Chenglin He  
Sarah Mossman  
Jonathan Ryan  
Chi Wah Szeto  
Penny Weng

### Partially Active

Hermione Blair  
Robyn Blewett  
Lisa Blundell  
Felicity Boyd  
Grant Bridgwater  
Emma Chapman  
Anne Cheng  
Zoe Cooper  
Rosalind Devlin  
Fiona Eunson  
Esta Farquhar  
Laura Galt  
Rebecca Greaves  
Megan Howard  
Vicki Jones  
Joanne Lester  
Kym Lewis  
Rowena Macdonald  
Jane Masters  
Melanie McKelvie  
Erina Metcalf  
Stella Morgan  
Fiona Morton  
Rebecca Payne

Andrew Riddell  
Cushla Salt  
Angela Smith  
Joanne Sunde  
Vernon Warren  
Grey Wilson  
Nicola Woodhead

### Recent Non-active

Bronwyn Allerby  
Michelle Baker  
Terry Baxter  
Ashlie Carlyle  
Vicki Carruthers  
Glodia Choi  
Brian Coutts  
Melissa Douche  
Jennifer Edwards  
Ailsa Fisher  
Alexandria Fraser  
Rachael Gresham  
Patricia Holm  
Elizabeth Hovell  
Julia Kennedy  
Maree Kleinlangvelsloo  
Angela Koppel  
Ursula Lehr  
Alexandra Mabin  
Sarah McPhee  
Kelly Parekowsai  
Rachel Ritchie  
Lee Salde  
Kate Sanders  
Pamela Santos  
Rochelle Sewell  
Neil Sheerin  
Aimee Simons  
Laura Swan  
Zita Talaic-Burgess  
Hannah Thompson  
Leslie Vyfhuis  
Vanessa Wilkinson  
Simone Williams  
Yi Wei Zou

### Recent Non-active with Partnership

Sara McMillan  
Kate Searle  
Susannah Tait

### Retired

Bryan Bang  
Max Barber  
John Betts  
Dirk Bolt  
Alan Bradbourne  
Hugh Briggs  
David Chandler  
Jim Clarke  
Valerie Cole  
David Collins  
Karl Cooper  
Peter Crawford  
Hester den Ouden  
John Dryden  
Ross Dunlop  
Kathryn Edmonds  
Derrick Edmondson  
Michael Garland  
Lindsay Gow  
Matthew Grainger  
Joy Grant  
David Grove  
Rex Hannam  
Robert Hayles  
Ewen Henderson  
Bennick Hudson  
Gordon Macfarlane  
Keith Mahony  
Kenneth Nairn  
Shelagh Noble  
Tony O'Connor  
Susan Parsons  
Alex Parton

William Pringle  
Andrew Ralph  
Marinus Reynders  
Robert Riddell  
William Robertson ONZM  
David Sheppard  
Warren Stace  
Helen Tobin  
Tony Town  
Eileen von Dadselzen  
Michael Wearne  
Ted Wells  
Alan Withy  
Robert Wyber

### Student

Nicki Ablitt  
Sara Abusidou  
Sarah Adams  
Ghazala Ambreen  
Katrina Andrews  
Bill Apusae  
Marzuq Asgar  
Elizabeth Au  
Brandon Baillie  
Lynette Baish  
Mayce Ballantyne  
Anette Becher  
Joubert Bekker  
Angela Bell  
Dan Benny  
Jean Berry  
Kirsten Binnie  
Gemma Bishop  
Brittany Bradley-Cane  
Matthew Brajkovich  
Gemma Brennan  
Olivia Bretherton  
Amon Brown  
Laura Brownlie  
Harrison Burnard  
Petra Burns  
Sarah Butler  
Sherilyn Byron  
Nikki Callinan  
Hineirangi Carberry  
Sophie Carter  
Rahul Chand  
Sujol Chand  
Yining (Vincent) Chao  
Zachary Chisam  
Kate Chivers  
Devon Christensen  
Stefanie Christensen  
Sebastian Clarke  
Dylan Clayton  
Keeley Clayton  
Amanda Coats  
Lucy Collins  
Samuel Cooper  
Logan Copland  
Nomesia Costa dos Reis  
Rachel Cottam  
Laura Cranston  
Logan Crawford  
Layla Croker  
James Cummins  
Rosanna Daly  
Christian Davey  
Fran Davies  
Jacinda Davis  
Stephen Davis  
Matheson Day  
Kara Dentice  
Mark Dold  
Olivia Dommert  
Danielle Douglas  
Angela Drake  
Alec Duncan  
Andrew Duncanson  
Stephanie Dwyer  
Sally Dymond  
Victoria Edmonds  
Natasha Eichler  
Heleina Erasito  
Edwar Eshow  
Jessica Esquilant

Morgan Followfield  
 Lauren Ford  
 Anna Frampton  
 Rebecca Gibson  
 Wednesday Gilbert  
 Joanna Gilroy  
 Gabriela Glory  
 Adriene Grafia  
 Adam Gray  
 Courtney Guise  
 Kristina Gurshin  
 Eamon Guthrie  
 Oliver Haarhoff  
 Nerilee Hakkaart  
 William Hall  
 Christina Hanna  
 Sheryl Hansford  
 Rebecca Hare  
 David Harnett  
 Kendyll Harper  
 Fern Harpham  
 Nathan Harris  
 Kathleen Haylock  
 Kyle Hefferon  
 Oliver Hermans  
 Andrew Hill  
 Turi Hippolite  
 Thomas Hosford  
 SinMeun How  
 Judy (Qiu Yan) Hu  
 Christine Huang  
 Rui Huang  
 Pippa Huddleston  
 Aaron Hudson  
 Kathleen Hudson  
 Matthew Husband  
 Briar Hutchings  
 James Imlach  
 Rakad Jaffar  
 Thejas Jagannath  
 Kahlia Jemmett  
 Isobel Jennings  
 Tai Il Jeong  
 Hai Tao Jing  
 Jin Woo Jo  
 Cameron Joe  
 Alyssa Jones  
 Claudia Jones  
 Idris Jones  
 Shona Jowett  
 Josivini Kaloumaira  
 Matt Kayse  
 Ruth Keeling  
 Christopher Khouri  
 Matthew Kilpatrick  
 Jeehyeon Kim  
 Helene Kirpensteijn  
 Alexandra Kitson  
 Matthew Klomp  
 Robyn Kvalsvig  
 Elisabeth Laird  
 Nirnay Lakshman  
 John(Jun) Lan  
 Jordyn Landers  
 Eun Jung Lee  
 Ju Lee  
 Michelle (Qiao Chu) Li  
 Peixuan Li  
 Feng Long  
 Alex MacDonald  
 Philippa Mackay  
 Eseta Maka  
 Alana Mako  
 Jessica Manhire  
 Don Manlangit  
 Jacob Marshall  
 Katie Maxwell  
 Ryan McAlister  
 Lachlan McCullough  
 Adam McCutcheon  
 Clare McDaniel  
 Emily McEwan

Angela McFlynn  
 Holly McGrouther  
 Jake McLaren  
 Colin McLeay  
 Alastair Meehan  
 James Miguel  
 Eleanor Monk  
 Amanda Moore  
 Anastacia Munthree  
 Alice Murphy  
 Bridget Napper  
 Helen Neale  
 Judith Neilson  
 Michael Nettleship  
 Annabelle Newell  
 Han Long (Edison) Ng  
 Catherine Nichol  
 Emma Norman  
 Stella Norris  
 Pareputiputi Nuku  
 Megan Nunns  
 James Oakley  
 Greer Oliver  
 Alison Outram  
 Donna Paki  
 Emily Patterson  
 Joshua Patterson  
 Ryan J Patterson  
 Hannah Payne-Harker  
 Nyssa Payne-Harker  
 Nicola Petrie  
 Hannah Pettengell  
 Chritle Pilkington  
 Maxwell Pocock  
 Nigya Pokhrel  
 Morgan Ramsay  
 Simone Rebello  
 Anna Reddish  
 Nicole Reid  
 Michaela (Micky) Reilly  
 Eilish Robinson  
 Jessica Rose  
 Matt Round  
 Emma Ryder  
 Sara Sahagian  
 Maneesha Sakamuri  
 Nathan Saluni  
 Thidarat Samart  
 Karyn Sands  
 Sarah Saxon  
 Joy Seseve  
 Rebecca Shaw  
 Toby Shephard  
 Ella Shield  
 Phillip Shipton  
 Nasha Sidhu  
 Ding Simin  
 Elizabeth Simpson  
 Nicholas Simpson  
 Courtney Sinclair-Eagle  
 Taljit Singh-Sandhu  
 Kate Skipworth  
 Annabel Small  
 Stelios Smilas  
 Lydia Smith  
 Ho Yin (Lewis) So  
 Vannita Som  
 Ella Sparrow  
 Bridget Spence  
 Nathan Spoonley  
 Shenan Stanton  
 Olivia Steven  
 Anna Stevens  
 Holly Stevens  
 Barbara Stevenson  
 Teresa Stevenson  
 Annika Swanberg  
 Stacy Tahere  
 Aurora Tahiti  
 Marama Takayawa  
 Levin Tan  
 Daisy (Zhe) Tang

James Taplper  
 Steph Taylor  
 Lee Kong Te  
 Cedric Tevaga  
 Maulik Thakkar  
 Laura Tinker  
 Christie Tippet  
 Mandy Tocher  
 Alicia Todd  
 Emma Turner  
 Jerson Valenzuela Cisternas  
 Hannah van Haren-Giles  
 Jason Van Niekerk  
 Johanna Verhoek  
 Sameer Vinnakota  
 Jennifer Vo  
 Klazien Voogt  
 Nicole Wallace  
 Cassey Wan  
 Melissa Warmenhoven  
 Phoebe Watson  
 Sarah White  
 Anne Wilkins  
 Sophie Wilkinson  
 Miriam Williams  
 Rachael Willox  
 Sally Wills  
 Henry Winchester  
 Kim Woelper  
 Jianan (Jenna) Wu  
 Kerry Wynne  
 Milcahx Xkenjik  
 Angela (Ya-Chun) Yang  
 Zhenyu Yang  
 John Yin  
 Carmen Yuen  
 Peri Zee  
 Kasey Zhai  
 Li Zhang  
 Elias Zhou  
 Simiao Zou

### Technician

David Bridges  
 Ralph Broad







# EMPOWER PLANNERS PROMOTING PLANNING EXCELLENCE





## Branches

Auckland / Northland  
Waikato  
Bay of Plenty  
Central North Island  
Wellington  
Nelson / Marlborough  
Canterbury / Westland  
Otago  
Central Otago  
Southland  
United Kingdom

## Auckland Head Office

Level 9  
52 Swanson Street  
Auckland City  
PO Box 106-481  
Auckland City 1143  
New Zealand  
Phone: +64 9 520 6277  
Email: [admin@planning.org.nz](mailto:admin@planning.org.nz)

[www.planning.org.nz](http://www.planning.org.nz)

# BUILDING A NETWORK OF PLANNING PROFESSIONALS ACROSS THE COUNTRY

