



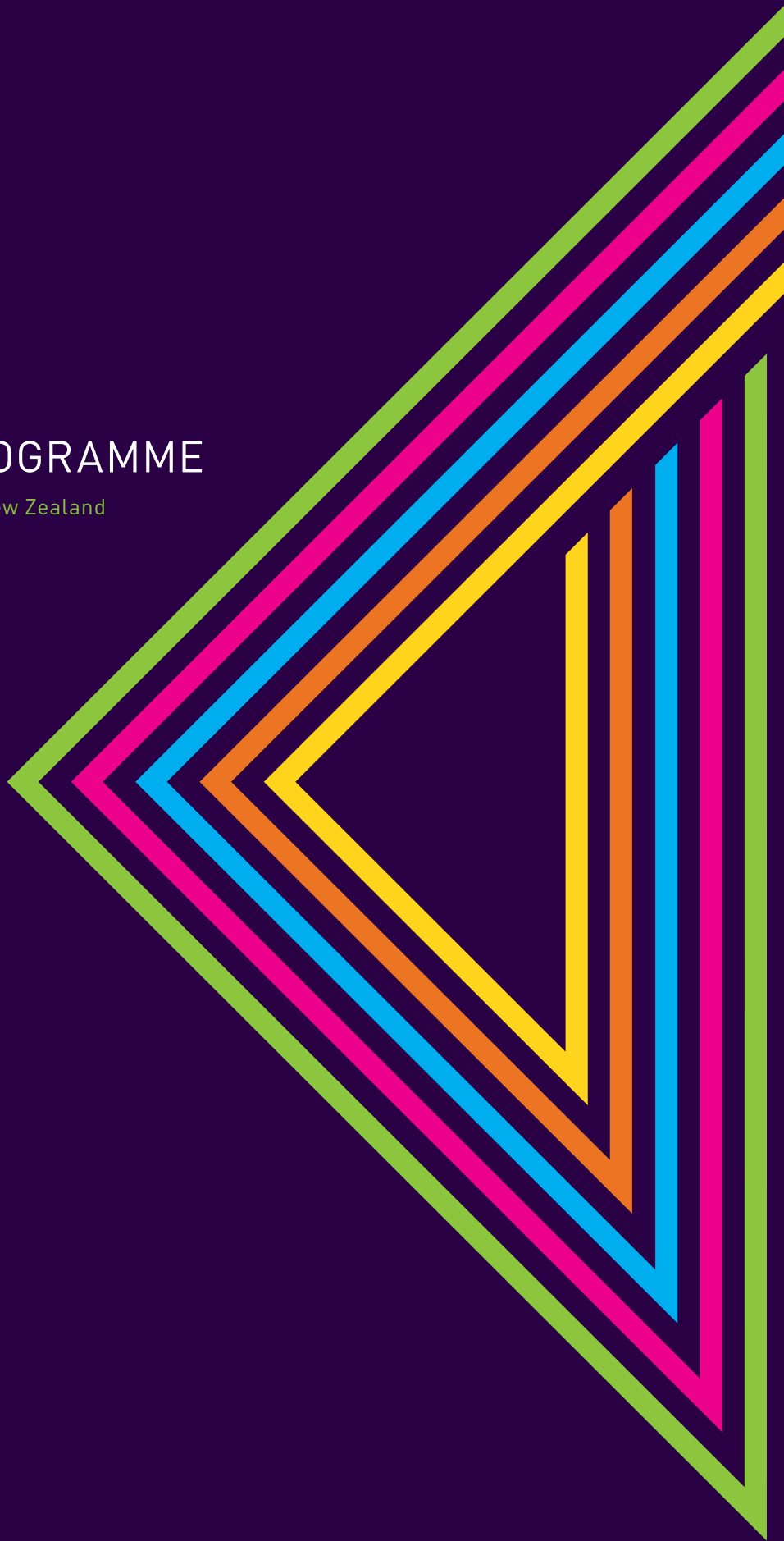
# BACK<sup>to the</sup> FUTURE 2015

## NZPI ANNUAL CONFERENCE PROGRAMME

14<sup>th</sup> – 17<sup>th</sup> April 2015 // Auckland, New Zealand

THINK  
WHAT IS  
POSSIBLE

#B2FUTURE





2007-2015

# BACK to the FUTURE 2015

**NGĀ  
WHĀINGA O  
TE WĀNANGA**

The New Zealand Planning Institute invites planners and allied professionals from around the world and New Zealand to Auckland for the 2015 NZPI Annual Conference, Back to the Future.

**#B2Future** will bring together the brightest of minds from across the planning spectrum to facilitate conversations and new thinking on complex issues facing communities. Now more than ever, planning influences a number of key issues that shape local communities and our daily lives.

**#B2Future** provides a global forum to discuss and address key issues using technology and lessons from our past to shape the future.

With more than 800 delegates expected, 2015 is an ideal opportunity to network and share ideas from this diverse and wide-ranging industry, hosted in New Zealand's fastest growing city, Auckland.

This is our time, our place in history to

## THINK WHAT IS POSSIBLE.



# WELLINGTON 2015

The 2015 conference will be from the 14th to 17th April 2015. The three days of conference programme include keynote speaker presentations, plenary sessions and workshops including panel discussions delivered by senior practitioners & industry leaders, field trips, a welcome reception and the formal gala awards dinner.

## SPECIAL INTEREST WORKSHOPS

Join us on Tuesday before and during the conference at the special interest workshops that will provide both planners and the wider planning fraternity with access to areas of special interest; these are the Papa Pounamu Hui, Elected Representatives & Independent Commissioners Workshop, Young Planners Congress, Rodney Davies Research Symposium and Urban Design Forum.

## EXHIBITION: PAVING THE WAY FOR PLANNING INNOVATION

We believe that technology is key to continued growth of quality planning, facilitating engagement with our communities and numerous stakeholders. At **#B2FUTURE** we will pave the way by bringing together the best of practice research, development and planning technologies, over two floors, under one roof for you to explore, share and learn from the best on offer today. The Exhibition is free to attend.

## CELEBRATING OUR PLANNING CHAMPIONS

The Gala Awards Dinner is set to be bigger, better and more glamorous than ever before. Join us to celebrate the success of our heroes at the final event of the conference with the presentation of the Best Practice Awards, Institute Gold Medal (Premier Individual Award) and Nancy Northcroft Supreme Planning Practice Award.

**Auckland  
Council**  
*Te Kaunihera o Tāmaki Makaurau*



**REGIONAL HOST CITY PARTNER**



# #B2FUTURE

The 2015 NZPI Conference will look at the past and future tense in planning, reflecting on how our history has shaped our present and how the use of technology will shape our future. In particular it will focus on the five sub-themes:

## THE FUTURE OF SMARTER CITIES

Technology is now key in how we live, work and play in this world and this continues to evolve as the opportunities offered by a digitally facilitated future are endless. **#B2FUTURE** will look at the influence of technology in how we are planning for the environment and our communities now and for the future.

## SUSTAINABILITY, RESILIENCE & INNOVATION

There is a growing need and desire for creating new and adaptive processes in planning for our environment and in becoming a more sustainable and resilient society. Climate change, sea-level rise, natural hazards, growth pressures, and increasing house and oil prices are challenges that are not new to planners and the planning world. **#B2FUTURE** will explore these challenges and seek how people, groups, organisations and systems experience these vulnerabilities, build resilience and adapt in the face of change.

## HERITAGE - HAS OUR HISTORY FRAMED OUR FUTURE

2015 marks 175 since the Treaty of Waitangi was signed and 100 years since the ANZACs first saw action at Gallipoli. It also marks 100 years since Auckland's volcanic cones were first protected. **#B2FUTURE** will reflect on the past, our history and heritage to look to the future as we respond and plan for the challenges of the next 100 years.

## THE CHANGING PLANNING FRAMEWORK

Since 1991, the Resource Management Act has been amended numerous times, and various governments have introduced additional legislation such as the Local Government Act and LGAAA to recognise the full breadth of planning and introduce new instruments to plan for our cities, towns and the environment. **#B2FUTURE** will reflect on the legislation created. It will explore the value of planning, its tools and instruments that have led to our present and its role in helping to create places where people want to live, work, relax and invest.

## THE CHANGING STATUS OF INDIGENOUS WORLD VIEWS IN A MODERN NEW ZEALAND

Since the Treaty of Waitangi was signed 175 years ago, understanding of the Treaty has significantly evolved and influenced how we honour the Treaty and refer to its intention, spirit and principles in practice. There is a growing awareness of its meaning in modern New Zealand. More than 2000 claims have been lodged with the Waitangi Tribunal and a number of major settlements have been reached. **#B2FUTURE** will reflect on the changing status and landscape of indigenous Maori worldviews in a modern New Zealand, how has this history shaped our present, and where will this take Aotearoa in the future.







# PROGRAMME

## MONDAY

13TH APRIL

**5.00 PM** **YOUNG PLANNERS NETWORKING EVENT**  
Little Easy, Ponsonby

## TUESDAY

14TH APRIL

**8.00 AM** **REGISTRATION DESK OPENS**  
BNZ Foyer - Aotea Centre

**8.00 AM** **REGISTRATION DESK FOR YP OPENS**  
Viaduct Events Centre

**8.00 AM** **PAPA POUNAMU HUI** (full day)  
Aotea Centre

**9.00 AM** **YOUNG PLANNERS CONGRESS** (full day)  
Viaduct Events Centre

**11.00 AM** **PAC MEETING**  
Aotea Centre

**12.00 PM** **ELECTED REPRESENTATIVES & INDEPENDENT COMMISSIONERS WORKSHOP** (half day)  
Aotea Centre

**1.00 PM** **LUNCH - PAC AND NZPI BOARD**  
(by invitation)  
Aotea Centre

**2.00 PM** **NZPI BOARD MEETING**  
Aotea Centre

**5.00 PM** **ALL WORKSHOPS AND MEETINGS END**

**5.30 PM** **REGISTRATION DESK CLOSES**

**5.30 PM** **OFFICIAL POWHIRI AND WELCOME RECEPTION**  
Aotea Square and Aotea Centre

**7.30 PM** **OFFICIAL POWHIRI AND WELCOME RECEPTION CLOSES**

**7.30 PM** **OPTIONAL SOCIAL EVENTS COMMENCE**

## WEDNESDAY

15TH APRIL

**7.30 AM** **REGISTRATION DESK OPENS**  
BNZ Foyer, Aotea Centre

**7.45 AM** **THEATRE DOORS OPEN**  
(doors will close at 9.00am)  
ASB Theatre

**8.30 AM** **WELCOME BY MASTER OF CEREMONIES**  
**SUSAN WOOD**  
ASB Theatre

**8.40 AM** **MIHI BY IWI REPRESENTATIVE**

**8.50 AM** **OPENING ADDRESS BY NZPI CHAIR,**  
**BRYCE JULYAN**

**9.00 AM** International Keynote **HAPPY CITY**  
**CHARLES MONTGOMERY, CANADA**

**9.45 AM** International Keynote **SMART CITIES**  
**JOHN TOLVA, UNITED STATES**

**10.20 AM** **PANEL Q & A WITH SUSAN WOOD**

**10.40 AM** **MORNING TEA SPONSORED BY SIMPSON GRIERSON**  
Owens & BNZ foyers

**11.00 AM** **NZPI AWARDS PRESENTATION**  
ASB Theatre

**11.10 AM** National Keynote **THE AUCKLAND STORY**  
**ROGER BLAKELEY, AUCKLAND COUNCIL**

**11.40 AM** National Keynote **NZ GOVERNMENT STORY**  
**HON DR NICK SMITH, MINISTER FOR THE ENVIRONMENT**

**12.10 PM** **PANEL Q & A WITH SUSAN WOOD**

**12.30 PM** **LUNCH**  
Owens & BNZ foyers

**12.30 PM** **CBD WALKING TOURS BEGIN**  
Departs BNZ Foyer

**1.30 PM** PARALLEL SESSION 1  
**PRESENTATIONS OF VARIOUS PAPERS**  
Lower NZI 1,2,3, Upper NZI 4,5,6 and ASB Theatre

**3.15 PM** **AFTERNOON TEA SPONSORED BY MWH**  
Owens & BNZ foyers

**3.40 PM** International Keynote **CITIES WE ALL WANT**  
**DR MARK ELLIOTT, AUSTRALIA**  
ASB Theatre

**4.15 PM** International Keynote **PLANNING & DATA**  
**TIM STONOR, UNITED KINGDOM**

**4.40 PM** **PANEL Q & A WITH SUSAN WOOD**

**5.00 PM** **DAY 1 CLOSE BY SUSAN WOOD**

**5.15 PM** **END OF CONFERENCE DAY 1**  
**NETWORKING DRINKS SPONSORED BY STYLES GROUP**  
The Box & BNZ Foyer, Aotea Centre

**5.15 PM** **ANNUAL GENERAL MEETING**  
**NETWORKING RECEPTION WITH NZPI BOARD**  
Blue Bar, Aotea Centre

**6.00 PM** **ANNUAL GENERAL MEETING**  
Upper NZI 6, Aotea Centre

**6.30 PM** **OPTIONAL SOCIAL EVENTS COMMENCE**

**7.00 PM** **CONFERENCE DAY 1 NETWORKING DRINKS ENDS**

# THURSDAY

16TH APRIL

- 7.30 AM**     **REGISTRATION DESK OPENS**  
BNZ Foyer - Aotea Centre
- 7.45 AM**     **THEATRE DOORS OPEN**  
(doors will close at 9.00am)  
ASB Theatre
- 8.30 AM**     **WELCOME BY MASTER OF CEREMONIES**  
**SUSAN WOOD**  
ASB Theatre
- 8.40 AM**     International Keynote  
**PEOPLES' INFLUENCE ON FUTURE CITIES**  
**DENNIS WALSH, CANADA**
- 9.15 AM**     International Keynote  
**BIG DATA AND BIG THINKING**  
**RICHARD WURMAN, UNITED STATES**
- 10.00 AM**     International Speakers Panel  
Discussion **THE INFLUENCE AND USE OF TECHNOLOGY ON PLANNING FOR FUTURE CITIES**
- 10.40 AM**     **MORNING TEA SPONSORED BY BECA**  
Owens & BNZ foyers
- 11.00 AM**     **NZPI AWARDS PRESENTATION**  
ASB Theatre
- 11.10 AM**     International Keynote  
**HISTORIC PRESERVATION**  
**RHONDA SINCAVAGE, UNITED STATES**
- 11.40 AM**     National Keynote  
**MAORI INDIGENOUS LOCAL & WORLD VIEWS**  
**SIR TIPENE O 'REGAN, CHRISTCHURCH**
- 12.10 PM**     **PANEL Q & A WITH SUSAN WOOD**
- 12.30 PM**     **LUNCH SPONSORED BY BOFFA MISKELL**  
Owens & BNZ foyers
- 12.30 PM**     **CBD WALKING TOURS BEGIN**  
Departs BNZ foyer
- 1.30 PM**     PARALLEL SESSION 2  
**WORKSHOPS & PRESENTATIONS**  
Lower NZI 1,2,3 and Upper NZI 4
- 1.30 PM**     **URBAN DESIGN FORUM**  
ASB Theatre
- 1.30 PM**     **RODNEY DAVIES RESEARCH SYMPOSIUM**  
Upper NZI 5
- 1.30 PM**     **URBAN EXPERIMENTS WORKSHOP WITH CHARLES MONTGOMERY**  
(prepaid event) Upper NZI 6

- 1.30 PM**     **UNIVERSITY OF AUCKLAND PRESENTATION**  
School of Architecture & Planning, 26 Symonds Street (at City Campus)
- 3.15 PM**     **AFTERNOON TEA**  
Owens & BNZ foyers
- 3.40 PM**     INTERNATIONAL KEYNOTE  
**SUSTAINABILITY AND RESILIENCE**  
**MICHAEL NOLAN, AUSTRALIA**  
ASB Theatre
- 4.15 PM**     NATIONAL PANEL DISCUSSION  
**REFLECTIONS ON PLANNING IN NEW ZEALAND; PAST, PRESENT AND FUTURE**
- 5.00 PM**     **CLOSE OF DAY 2 BY SUSAN WOODS**
- 5.15 PM**     END OF CONFERENCE DAY 2  
**NETWORKING DRINKS SPONSORED BY BOFFA MISKELL**  
The Box & BNZ Foyer, Aotea Centre
- 7.00 PM**     CONFERENCE DAY 2  
**NETWORKING DRINKS ENDS**

# FRIDAY

17TH APRIL

- 6.45AM - 5.00PM**     **FIELD TRIPS**  
(see conference website for specific timetable and details)
- 6.30 PM**     **PRE DINNER DRINKS**  
**NZPI GALA AWARDS SPONSORED BY BARKERS & ASSOCIATES**  
Viaduct Events Centre
- 7.30 PM**     **NZPI GALA AWARDS DINNER SPONSORED BY BARKERS & ASSOCIATES**  
Viaduct Events Centre
- 11.45 PM**     **NZPI GALA AWARDS DINNER CLOSES**



**SUSAN WOOD**  
MASTER OF CEREMONIES  
NEW ZEALAND

Susan Wood is one of New Zealand's most recognisable and accomplished broadcasters. The award-winning journalist and broadcaster spent 21 years on our television screens – she was the first Australia correspondent, the first host of Middy, Breakfast and Close Up, anchor of Today Live and regular stand-in on the Holmes show. She continues to stand in on the top rating Newstalk ZB Breakfast and Drive radio shows as well as running her own communications company. Susan is an accomplished MC, speaker and interviewer. Susan will be the Master of Ceremonies for this year's NZPI Conference at Aotea Centre in Auckland.



**DENNIS WALSH**  
SUSTAINABILITY FUTURIST  
CANADA

Dennis is a sustainability futurist, who promotes business practices that restore environmental quality and build social equity, while increasing future long-term profitability. Dennis's vision for the future Millennial City explores a paradigm shift facing high-tech cities and citizens wanting new, exciting, viable futures, living ethically and well.



**CHARLES MONTGOMERY**  
URBAN EXPERIMENTALIST  
CANADA

Charles Montgomery has discovered a striking relationship between the design of our minds and the design of our cities, a concept he lays out in his book Happy City. Charles' writings on urban planning, psychology, culture, and history have appeared in magazines and journals on three continents. Among his numerous awards is a Citation of Merit for outstanding contribution toward public understanding of climate change science from the Canadian Meteorological and Oceanographic Society. Charles has used insights in happiness science to drive experiments that help citizens transform their relationships with each other and their cities. Montgomery's work ultimately nudges us out of our comfort zone to find a hopeful new vision for our happy cities.



**SIR TIPENE O'REGAN**  
CHAIRMAN, NGĀI TAHU MĀORI TRUST BOARD  
NEW ZEALAND

Sir Tipene O'Regan is the long-serving Chairman of the Ngāi Tahu Māori Trust Board. He is an Adjunct Professor in the Ngāi Tahu Research Centre at the University of Canterbury, and currently chairs Te Pae Korako and Te Pae Kaihika for Te Rūnanga o Ngāi Tahu. These two bodies lead the tribe's work in developing the Ngāi Tahu archive, GIS cultural mapping and authentication of traditional history. His personal scholarly interest is largely in traditional history and ethnology of Ngāi Tahu and Te Waipounamu.



**MINISTER NICK SMITH**  
NEW ZEALAND PARLIAMENT  
NEW ZEALAND

Hon Dr Nick Smith has held 12 Ministerial portfolios in the Bolger, Shipley and Key Cabinets, including Conservation, Building & Construction, Housing, Education, Immigration, Corrections, Social Welfare, ACC, Treaty Negotiations, Environment, Climate Change and Local Government. His greatest passion has been improving New Zealand's management of the environment and natural resources, with achievements including the creation of the Kahurangi and Rakiura National Parks, 17 marine reserves, the introduction of the Emissions Trading Scheme to reduce greenhouse gas emissions, the establishment of both the Energy Efficiency and Conservation Authority, and the Environment Protection Authority. Dr Smith completed an Honours (First Class) degree in civil engineering and a PhD in landslides at the University of Canterbury.



**MARK ELLIOTT**  
COLABFORGE  
AUSTRALIA

Mark's philosophy engages citizen participation and online collaboration to create the future cities we all want. As the driving force behind the award-winning Future Melbourne, the world's first wiki-based collaborative city plan that any one can edit, Mark will share the latest in scalable collaboration and shaping conversations with the public in a manner that maximises community support.





#### TIM STONOR

SPACE SYNTAX  
UNITED KINGDOM

Tim is an architect and urban planner who uses science-based methods of urban modelling to create human-focused visions for the future of places. His work demonstrates how social, economic and environmental value is created by the movement, interaction and transaction of people in space. Tim is currently assisting the UK Government Office for Science as a member of the Lead Expert Group in its Foresight project on The Future of Cities. He is a Visiting Professor at University College London, a director of The Academy of Urbanism, a Fellow of the Royal Society of Arts, and a winner of the prestigious Harvard Loeb Fellowship.



#### RICHARD SAUL WURMAN

via tele conference  
UNITED STATES

Richard is an American architect and graphic designer, who has written and designed more than 83 books, co-founded TED conferences and most recently co-developed The Urban Observatory project - a first of its kind digital approach to city modeling and comparison for the urban planner that takes advantage of GIS as an integrative platform. Richard's latest book is called 33: Understanding Change & the Change in Understanding. His next project is the 555 conference, consisting of 5 experts, 5 predictions of future game changing patterns for 5 years into the future, FINDING THE FUTURE FIRST™

Richard graduated from the University of Pennsylvania in 1959 with M. Arch. and B. Arch. Degrees with honours and was awarded the Arthur Spayd Brooke Gold Medal. He is the recipient of the Lifetime Achievement Award from the Smithsonian, the AIGA Gold medal a Fellow of the American Institute of Architecture, the recipient of four honorary doctorate degrees, two Graham Fellowships and recently became a Distinguished Professor of the Practice of Design in the College of Arts, Media and Design at Northeastern University.



#### JOHN TOLVA

PRESIDENT OF POSITIVENERGY PRACTISE  
UNITED STATES

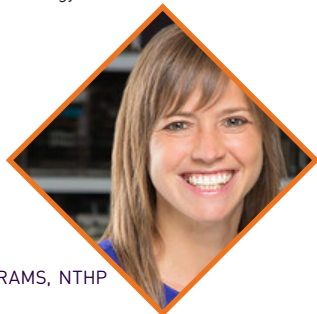
John Tolva is the president of PositivEnergy Practice, an urban systems engineering firm based on data-driven decision-making for sustainable new building design, retrofits, and urban master planning. John's career has focused on developing and applying technology to improve the urban environment. From 2011 to 2013 he was Chief Technology Officer for the City of Chicago, leveraging technology to streamline public services through more efficient data-sharing, digital communications, and next-generation infrastructure. He led the development of 'The City of Chicago Technology Plan', an initiative that sets forth a series of public-private strategies to accelerate economic growth, build educated and digitally-engaged communities and workforce, improve government services, and reduce costs through technology.



#### ROGER BLAKELEY

CHIEF PLANNING OFFICER, AUCKLAND COUNCIL  
NEW ZEALAND

Roger Blakeley was General Manager, State Coal Mines at the start of the State-owned Enterprises establishment in 1984. As Secretary for the Environment, he led the conception and development of the Resource Management Act 1991, and while Chief Executive at the Department of Internal Affairs, initiated work on the Local Government Act 2002. In 2000, he was appointed Chief Executive of Porirua City Council. In Chicago in November 2010, Porirua City won gold medals in all three categories entered in the International Liveable Community Awards. Dr Blakeley's principal tasks for the Mayor and Auckland Council include the development and implementation of the Auckland Plan, the Proposed Auckland Unitary Plan, Area Spatial Plans, the Economic Development Strategy, and the City Centre Master Plan.



#### RHONDA SINCAVAGE

DIRECTOR OF PUBLICATION & PROGRAMS, NTHP  
UNITED STATES

Rhonda Sincavage is Director of Publication and Programs at the National Trust for Historic Preservation in Washington DC. In this capacity, she oversees training, conferences, resources and publications for preservation professionals. Prior to her current role, she was involved in public policy and preservation advocacy, both as Associate Director of Government Relations and Policy at the National Trust and as Vice President of Preservation Action, the national grassroots lobbying organization for historic preservation.

# SPEAKERS

# YP CONGRESS



## URBAN LEGENDS: YOUNG PLANNERS CONGRESS 2015

The Young Planners Congress is the annual professional development event organised by and for young planning professionals and planning students in New Zealand.

Urban Legends is a hell of a name for a gathering of Young Planners. It's about challenging some of the myths and conventional wisdoms that permeate our profession. It's about storytelling – informing our urban future with narratives of the past.

Mostly though, it's about us. All of our speakers in one way or another are 'urban legends' – people that have made a real difference through their work. The Congress is about us learning from them, about integrating their collective wisdom into our own practice, and about inspiring young planners to become urban legends in their own right.

### MONDAY 13TH APRIL

5.00 PM

**YOUNG PLANNERS NETWORKING EVENT**  
Little Easy, Ponsonby

### TUESDAY 14TH APRIL

8.00 AM

**REGISTRATION DESK FOR YOUNG PLANNERS OPENS**  
Viaduct Events Centre

9.00 AM

**WELCOME**

9.15 AM

**VISUALISING SPACE**  
IAN TAYLOR, ANIMATION RESEARCH

9.35 AM

**POLITICISING PLANNING**  
JULIE ANNE GENTER, GREEN PARTY MP

9.55 AM

**REINVENTING AUCKLAND**  
NAT CHESHIRE, CHESHIRE ARCHITECTS

10.15 AM

**PANEL Q & A**

10.35 AM

**MORNING TEA**

10.50 AM

**THE GREAT HOUSING DEBATE**  
DAVID CLELLAND HOUSING PROJECT OFFICE (AUCKLAND COUNCIL)  
MARTIN UDAL, CRANLEIGH STRATEGIC LIMITED/TAMAKI REDEVELOPMENT CO.  
PHIL MCDERMOTT CITY SCOPE CONSULTANTS

11.50 AM

**THE HAPPY CITY**  
CHARLES MONTGOMERY, AUTHOR HAPPY CITY (CANADA)

12.20 PM

**LUNCH**

1.30 PM

**STORYTELLING IN PLANNING**  
NICK WILLIAMSON, MASHMATIX

2.00 PM

**TACTICAL URBANISM**  
LUCINDA HARTLEY, [CO]DESIGN STUDIO (AUSTRALIA)

3.00 PM

**WORKSHOP ACTIVITY WITH LUCINDA HARTLEY**

3.30 PM

**CLOSING REMARKS**

3.45 PM

**YP CONGRESS CONCLUDES / NETWORKING DRINKS**

5.00 PM

**NETWORKING DRINKS CONCLUDE**  
YP ATTENDEES TO THE MAIN CONFERENCE WILL TRAVEL DOWN TO OFFICIAL WELCOME RECEPTION OF THE NZPI CONFERENCE

THE YOUNG PLANNERS CONGRESS IS PROUDLY SPONSORED BY



# SPECIAL INTEREST WORKSHOPS

## PAPA POUNAMU HUI

**E nga karanga maha e hikoi nei ki runga te maha o te whenua - Tena Koutou**

To the many distinguished faces that tread the face of this land - Greetings

The Papa Pounamu Hui is an annual signature event, held prior to the start of the main NZPI Conference. Since the formation of a Maori Special Interest Group within NZPI, the hui has become a key event in which delegates and speakers from across the country come together to discuss key topical issues and advancement in the integration of Maori planning practice.

The hui is seen as a key means to pursue the vision of Papa Pounamu, being to increase and retain Māori and Pacific peoples' participation in planning and achieve greater integration of Māori environmental cultural practices in the New Zealand planning sector.

Building upon previous Papa Pounamu hui, the 2015 hui key theme is Ngā Whaingā o Te Wānanga - 'Back to the future' and as such seeks to invoke dialogue and critical thinking on planning issues unique to Māori and Pacific Peoples explore future-focused planning issues which are deeply rooted in the history of Aotearoa.

**Titiro whakamuri kia totika ai te haere whakamua**

To reveal the past and lay the pathway into the future

## KAUPAPA O TE RA - PROGRAMME

**TUESDAY**  
**14TH APRIL**

<b>8.00 AM</b>	<b>MIHI WHAKATAU</b>
<b>8.20 AM</b>	<b>THE INDEPENDENT MAORI STATUTORY BOARD</b> What's on the horizon for 2015 <b>BRANDI HUDSON, CHIEF EXECUTIVE, INDEPENDENT MAORI STATUTORY BOARD</b>
<b>9.30 AM</b>	<b>HOW'S THE RMA SHAPING UP?</b> Two RMA experts will discuss their views on what the RMA has done for Maori over the past 20 years <b>HIRINI MATUNGA, VICE CHANCELLOR, WAIKATO REGIONAL COUNCIL &amp; VAUGHAN PAYNE, CHIEF EXECUTIVE, WAIKATO REGIONAL COUNCIL</b>
<b>10.30 AM</b>	<b>MORNING TEA</b>
<b>10.45 AM</b>	<b>CULTURAL LANDSCAPES AND REINVIGORATING URBAN SPACES THROUGH HISTORICAL CONNECTIONS</b> Maori urban design expert will share his experiences of contemporary design in Tamaki Makaurau <b>CARIN WILSON, KAIHAUTU, STUDIO PASIFIKA</b>
<b>11.50 AM</b>	<b>INTEGRATING MATAURANGA MAORI INTO SETTING WATER QUALITY LIMITS</b> Demystifying Matauranga Maori <b>MAUI HUDSON, SENIOR RESEARCHER, WAIKATO UNIVERSITY</b>
<b>12.50 PM</b>	<b>LUNCH</b>
<b>1.30 PM</b>	<b>PRESENTATION OF PLANNING CERTIFICATE FOR OUTSTANDING CONTRIBUTIONS TO MAORI PLANNING</b> <b>TE URUROA FLAVELL, MINISTER FOR MAORI DEVELOPMENT, MINISTER FOR WHANAU ORA AND ASSOCIATE MINISTER FOR ECONOMICS</b>
<b>2.30 PM</b>	<b>CO-GOVERNANCE IN ACTION - RANGITAHI RIVER FORUM</b> The challenges of developing Treaty plans within a western planning framework <b>MARAMENA VERCOE, CHAIR RANGITAHI RIVER FORUM &amp; JANE WALDON, TEAM LEADER MAORI POLICY, BOP REGIONAL COUNCIL</b>
<b>3.30 PM</b>	<b>THE ENIGMA OF THE TUHOE NATION</b> The aspirations of mana motuhake for Tuhoe <b>PATRICK MCGARVEY, TE URU TAUMATUA BOARD MEMBER</b>
<b>4.30 PM</b>	<b>CLOSING SUMMARY / PAPA POUNAMU 2016</b>

This hui is a free event, however you must register to attend via the Conference Registration process.



## ELECTED REPRESENTATIVE AND INDEPENDENT COMMISSIONERS WORKSHOP

Tools for the future working with the RMA

**TUESDAY 14TH APRIL**

**12.00PM - 5.00 PM**

The Elected Representatives and Independent Commissioners Workshop is the opportunity for elected representatives and independent commissioners to gain or enhance their awareness about practice relevant to the Conference themes and location.

This year it will be held on Tuesday 14th April, prior to the start of the main conference. The workshop will include presentations along with interactive sessions, capacity building and networking opportunities on:

- ▶ **The Auckland Unitary Plan Independent Hearing Panel** – the process so far, some of the challenges to-date and what the outcomes will look like
- ▶ **Implications of recent case law** relevant to roles as plan development and/or resource consent decision-makers, and
- ▶ **A training workshop focused on Making Good Decisions**, delivered by Wendy Turvey, Programme Manager, Opus. This will provide a snap shot of the Making Good Decisions training covering the ethical, legal and practical requirements of decision-makers under Resource Management Act 1991.

Leigh Auton will be the MC for this important session bringing his wealth of knowledge and experience to flavour the session. Leigh is Director of Auton & Associates Ltd, Ex CEO Manukau City and past Interim CEO at Tauranga City Council.

To register for this workshop, please visit the conference website. Note this workshop is included in a full registration to main conference. Lunch and afternoon tea are included.



# RODNEY DAVIES RESEARCH SYMPOSIUM

## THURSDAY 16TH APRIL

1.30 PM - 3.15 PM

This Symposium is named after Rod Davies a town planner and architect whose long and distinguished contribution to the planning profession and the NZPI was recognised in the award of Life Fellow in 2009.

As a planner Rod was always progressive in his views, working on the edge of planning using multidisciplinary approaches to connect planning to an array of other areas from architecture and design to tourism. He was often at the forefront of planning's boundaries and was always willing to try new ways. It is that spirit this Symposium will both challenge and inspire planners at all levels.

The papers selected for the Symposium take some of our current planning issues and ask planners to look beyond the everyday, to look at a new twist on old ideas and to be bolder in their approaches to create a more visionary direction for New Zealand's planning, in a manner Rodney Davies would have applauded. Each paper is presented for 15 minutes with extra time included for Q&A as a panel.

- ▶ AN OVERVIEW OF THE STATE OF NATURAL HAZARD PLANNING PROVISIONS IN NEW ZEALAND  
Wendy Saunders, GNS Science and Emily Grace, GNS Science
- ▶ ASIAN MIGRANTS' EXPERIENCES OF PUBLIC TRANSPORT IN AUCKLAND  
Imran Muhammed, Massey University and Jane Pearce, University of Canterbury
- ▶ THE LEGITIMACY OF URBAN CONTAINMENT & PLANNED RESIDENTIAL INTENSIFICATION IN THE MARKET STATE  
Joanna Ross, Massey University
- ▶ SPREAD YOUR RISK: RECONSIDERING THE "QUARTER ACRE" DREAM FROM AN EVOLUTIONARY PERSPECTIVE  
Roy Montgomery, Lincoln University
- ▶ WHAT MAKES EARLY CAREER PLANNERS EFFECTIVE IN THE WORK PLACE?  
Dory Reeves, University of Auckland





## HAPPY CITY DESIGN WORKSHOP WITH CHARLES MONTGOMERY

**THURSDAY 16TH APRIL**

**1.30PM - 4.30 PM**

Policymakers around the world are embracing human wellbeing as a legitimate and necessary goal. Jurisdictions from Bhutan to France to the United Nations have adopted happiness indices to help guide development and economic policy. Cities need to catch up.

Urban systems influence the way we feel, behave and interact with each other in ways that many of us fail to realize. In a world of conflicting goals and complex systems, it can be easy to overlook the urban design/well-being connection. The good news is that happy city principles can help cities meet public health objectives as well as economic and sustainability goals at the same time.

### THE WORKSHOP

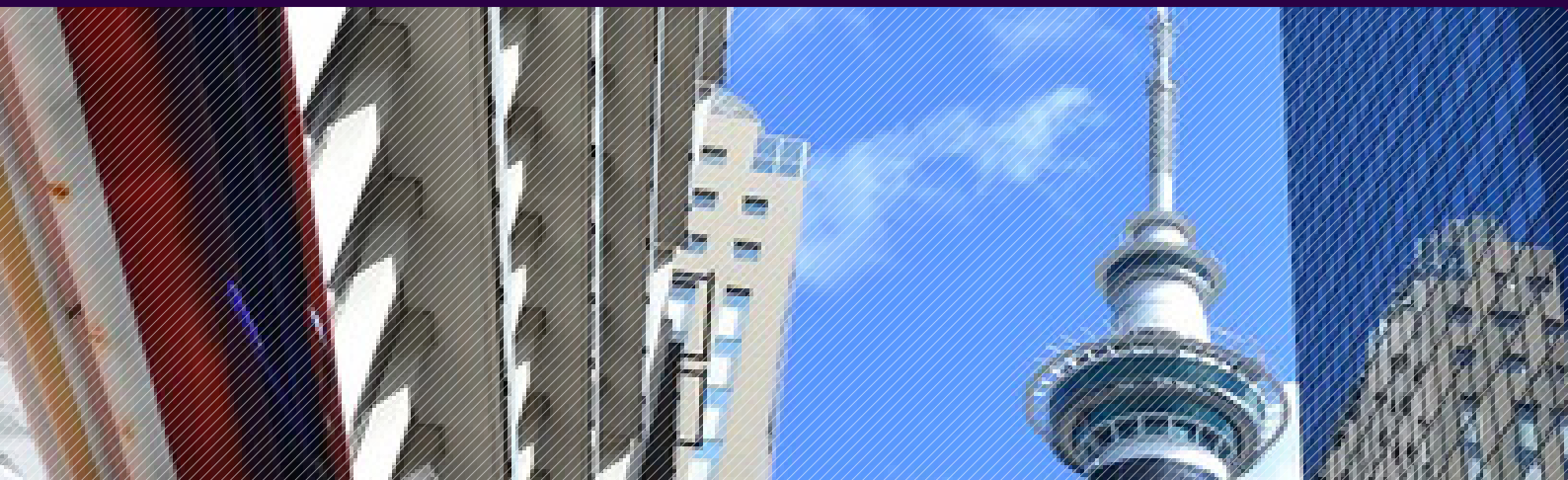
How can you bring happiness into your own urban design and planning processes? In this fun, fast-paced, 180-minute workshop, participants will be introduced to a new framework for incorporating well-being principles into urban design and systems planning. Together we will adapt this framework to local context, conditions and aspirations through two cycles of immersive work. First, participant teams will explore key elements of wellbeing and produce their own objectives for improving happiness. Then, teams will consider a case study from New Zealand and propose specific guidelines and interventions for action.

### LEARNING OBJECTIVES

Participants will:

- ▶ Learn how urban form and city systems influence physical and psychological wellbeing.
- ▶ Be able to articulate how happy city principles can help cities meet public health objectives and economic and sustainability goals.
- ▶ Learn how to adapt a framework for incorporating wellbeing principals into urban design and systems planning.
- ▶ Produce site-specific happiness based guidelines and interventions.

Note: this workshop is not included in the full or day registration package. There is a separate cost to attend and register for this specific workshop. Limited spaces available.





## URBAN DESIGN FORUM

**THURSDAY 16TH APRIL**

1.30 PM

The Urban Design Forum is a well-established and very active special interest group provided for as part of the NZPI conference structure. The forum contributes a unique point of view providing a different perspective on urban design and urban planning issues.

Planning for the workshop is currently underway. For more information on the Urban Design Forum, please visit the Urban Design Forum website.

## UNIVERSITY OF AUCKLAND PRESENTATION

The University of Auckland: Leading Trends in Planning Research

**THURSDAY 16TH APRIL**

1.30 PM - 3.15 PM

The University of Auckland's School of Architecture and Planning is New Zealand's oldest and largest provider of planning education. Since its creation in 1958 it has been at the cutting edge of urban planning research in New Zealand and internationally. The School has a long tradition of engaging and supporting the profession with many of our staff actively engaged in a wide range of practice-based research programmes addressing issues currently facing planning practitioners in New Zealand and Internationally.

This session, beginning in the BNZ Foyer, Aotea conference venue with a guided historical walking tour to the University, led by the School's Head Dr Elizabeth Aitken Rose, will highlight historical features and points of interest along the way including many of Auckland's and the University's traditions. The tour will culminate at the School of Architecture and provide participants with an opportunity to hear presentations from some of the School's leading staff covering two prominent research projects current underway, with time for Q & A.

- |         |   |
|---------|---|
| 1.30 PM | <b>HISTORICAL WALKING TOUR OF THE UNIVERSITY OF AUCKLAND</b><br>DR. ELIZABETH AITKEN ROSE   |
| 2.45 PM | <b>AFTERNOON TEA</b><br>Auckland University   |
| 3.00 PM | <b>ACHIEVING THE 10 MINUTE WALKABLE NEIGHBOURHOOD IN AUSTRALIA AND NEW ZEALAND SUBURBAN LOCATIONS</b><br>DR LEE BEATTIE AND PROF ERROL HAARHOFF |
| 3.45 PM | <b>LOW-CARBON CITIES: IMPLEMENTATIONS FOR NEW ZEALAND</b><br>DR STEPHEN KNIGHT-LENIHAN, MS PRUE TAYLOR AND MS TRISH AUSTIN                      |
| 4.30 PM | <b>SELF GUIDED WALK BACK TO THE CONFERENCE VENUE FOR NETWORKING</b><br>(5 minute walk)  |

This Auckland University walking tour and presentations are a free event, however you need to register to attend via the Conference Registration process.

# PAPERS AT A GLANCE

## PARALLEL SESSION 1

Wednesday 15th April – 1.30-3.15pm

Each paper is presented for 30 minutes each. A 5 minute break is included between papers to allow delegates to move between streams.

### **1A** Changing Planning Framework; Policies and Plans (supported by Simpson Grierson)

Outside the RMA comfort zone - learnings from implementing the Housing Accords and Special Housing Areas Act 2013

Elizabeth Wells, Auckland Council

First Experiences under the Tauranga Housing Accord.

Richard Coles, Boffa Miskell

Paul Taylor, Classic Builders Bay of Plenty/Waikato

Understanding trade-offs in urban planning: What can planners learn from economics?

Peter Nunns, MRCagney

Jonathan Cutler, MRCagney

### **1B** The Future of Smarter Cities

Exploring the Next Generation of Digital Planning Tools

Nick Williamson, Spatial Fusion

Sensing the Future: How will smart city principles and technology enable citizen co-creation in public policy-making, consent processing and service provision?

Laurence Sherriff, Align Limited

Adapting practice to achieve City2.0 – how recent graduates are changing the nature of planning and what can be done to accommodate them

Megan Couture, MWH Global

### **1C** Heritage

Facilitating the seismic strengthening of New Zealand's built heritage: Taking a fresh approach to filling the knowledge gap of property owners

Felicity Powell, OPUS International Consultants

Jean Beetham, OPUS International Consultants

Alison Dangerfield, Heritage New Zealand

The uneasy relationship between the RMA and the Heritage New Zealand Pouhere Taonga Act – ideas for an integrated framework?

Jill Gregory, Chapman Tripp

Amanda Stoltz, Chapman Tripp

Your Road is in My Landscape

Kirstie Thorpe, MWH Global

### **1D** The Changing Status of Indigenous Worldviews in a Modern New Zealand (supported by Beca)

A Stronger Voice for Māori in Natural Resource Management

Paul Beverley, Buddle Findlay

Addressing sensitive cultural issues in a large infrastructure project, the Huntly Section of the Waikato Expressway

Chris Dawson, Bloxam Burnett & Oliver

Raymond (Moko) Kumar, Waikato-Tainui

Deploying Ultra Fast Broadband through a collaborative consenting framework between Chorus and Auckland Mana Whenua

Graeme McCarrison, Chorus

Chris Horne, Incite

### **1E** Sustainability, Resilience and Innovation (supported by MWH Global)

Making Use of The Energy We're Flushing Away

Nick Meeten, Smart Alliances

Total Process. Design Control delivering sustainable and resilient communities for the future of Auckland

David Irwin, Isthmus Group

The Death and Life of Small New Zealand Towns

Quintin Howard, New Zealand Transport Agency

### **1F** Changing Planning Framework – Planning and Regulatory (supported by Auckland Council)

The evolution of designations

Andrew Cumberpatch, MWH Global

Chris Scrafton, MWH Global

Local Government Reform – Development Contributions

Steve Kerr, MWH Global

From planning to implementation

Joao Machado, Auckland Council

Rachael Eaton, Auckland Council

## PARALLEL SESSION 2:

Thursday 16th April – 1.30-3.15pm

Each workshop will run for 45 minutes unless stated. A 15 minute break is included for delegates to change between workstream for a second workshop.

### 2A Future of Smarter Cities

#### 100 Days: 100 Ideas for a Better Auckland

Digital media, planning and the future of smart cities

Stuart Houghton, Boffa Miskell

Transforming techniques for community engagement

Selwyn McCracken, MWH Global

Jane James, MWH Global

### 2B Planning and Technology

Using Social Media to gather data – How can we apply this to our industry?

Allenie Smith, GHD

Ryan Orr, GHD

Making Data Meaningful – Using GIS and Web Tools to Understand Housing Affordability

Alexander Raichev, MRCagney

Kerry Mattingly, Office of the Parliamentary

Commissioner for the Environment

### 2C Future of Planning

Planning Practice at 88mph

Orchid Atimalala, Envivo

Karyn Sinclair, Jacobs

The Back to the Future 2015 Time Capsule

Rachel Dimery, The Property Group

Sue Wells, The Property Group

### 2D Reframing the Transport Conversation

(sponsored by NZTA)

Reframing the transport conversation – ideas for improving alignment between strategic planning, asset management planning and District Plans for transport outcomes (90 mins)

Jeremy Blake, New Zealand Transport Agency

Michelle McCormick, New Zealand Transport Agency





## OFFICIAL POWHIRI AND WELCOME RECEPTION

**TUESDAY 14TH APRIL**  
5.30PM - 7.30 PM

The powhiri, a central part of Maori protocol, is a ceremony hosted by tangata whenua (people of the land) in formally welcoming visitors (manuhiri) to the area and it involves speeches, singing and hongi. This year, the Official Powhiri and Welcome Reception to the 2015 Conference will be held in Aotea Square with formalities starting at 5.30pm, Tuesday 14th April. The powhiri and welcome reception will be followed by canapés and drinks, proudly sponsored by Barkers & Associates.

## OPTIONAL SOCIAL EVENTS

We are excited to present a range of social events and dinner options for you to consider and select as part of the 2015 NZPI Conference. Please note that these social and dinner events will incur additional charges that will be added onto your registration to the conference. Please see website for more details.

These social options are limited. First in first served basis – reserve your spot as part of your registration to the Conference. We will keep you informed if any social events sell-out and/or change prior to the conference.

## FIELD TRIPS

**FRIDAY 17TH APRIL**

We are excited to present 16 different field trips for you to consider and select for your Day 3 attendance at the 2015 NZPI Conference.

Please note certain field trips will incur additional charges that will be added onto your registration to the conference. It is on a first in first served basis. We will keep you informed if any trips sell-out and/or change prior to the conference.

See website for more details on Field Trips.

- 1 // Auckland's Infrastructure: From Waterview
- 2 // City Fringe Heritage Tour 1 – Ponsonby to Newmarket
- 3 // Volcanic History of Auckland
- 4 // The North Shore Bike tour
- 5 // Three Waters Tour - Exploring Historic and Future Infrastructure Investment
- 6 // City Fringe Heritage Tour 2 – CBD to Parnell
- 7 // CBD Project Crawl
- 8 // Natural History: Trip to Auckland's "Wild" West Coast
- 9 // Explore Motutapu Island
- 10 // Growth and Natural History in the South
- 11 // Growth and Natural History in the North
- 12 // Growth and Transport in the South
- 13 // Behind the Scenes Tour of New Architecture
- 14 // New Suburban: Hobsonville Point
- 15 // Transforming New Lynn
- 16 // Wines and Plans: A Tour of Waiheke Island











The New Zealand Planning Institute invites you to attend the 'Back to the Future' Gala Awards Dinner 2015. This event cannot be missed!

**Friday 17th April**  
**Viaduct Events Centre, Wynyard Quarter**  
**From 6.30pm**  
**Dress code is black tie/formal attire**

### WHAT YOU CAN EXPECT...

- ▶ Canapés and a glass of bubbles on arrival
- ▶ Three course sit down dinner with complementary drinks
- ▶ Presentation of the Best Planning Practice, Institute Gold Medal (Premier Individual Award), Lance Leikis Young Planner and the Nancy Northcroft Supreme Planning Practice awards
- ▶ Live Entertainment with surprise performers
- ▶ Dancing
- ▶ A night of comedy and
- ▶ Networking in a glamorous venue with colleagues and friends!

For those with full conference registration, the ticket to the Gala Awards Dinner (and welcome reception) is included.

If you do not have full registration or would like to purchase additional tickets to the Gala Awards Dinner, you can do so on the conference website. Additional Tickets for the Gala Awards Dinner are priced at \$175.00 per person, or \$1,550.00 for a table of 10 (exclusive of GST).

We encourage individuals, organisations and consultancies to gather a group and purchase a table at an event not to be missed. Seating will be allocated by table, with preferences accommodated where possible.

### NZPI AWARDS

The real stars of the Gala Dinner evening are the award winners. In glittering style, we will be presenting awards to the recipients of the Best Practice Awards, Institute Gold Medal (Premier Individual Award), Lance Leikis Young Planner and the Nancy Northcroft Supreme Planning Practice Awards Award Nominations are now being accepted, closing February 10th 2015.

For details on the awards categories, criteria and the nomination process, please go to NZPI website.

2015  
B2F  
FUTURE

EXHIBITION PASS	YP CONGRESS Urban Legends	WORKSHOP PASS	CONFERENCE DAY PASS	CONFERENCE FULL PASS	GALA AWARDS DINNER
THIS GIVES YOU ACCESS TO:					
BNZ Foyer Owens Foyer For both conference days 15 and 16 April 2015	Pre YP Social Networking Function (night before Congress) 13 April 2015	Papa Pounmau Hui (full day)	Choose either 15 or 16 April 2015 Meals covered for the day (morning tea, lunch and afternoon tea)	A ticket to the <b>Official Welcome Reception</b> Tuesday 14 April, 5.30pm	A ticket to the Gala Awards Dinner 6.30pm, Friday 17 April (includes pre function drinks/canapes)
FREE	Full Day Congress	14 April 2015 Meals covered for the day (morning tea, lunch and afternoon tea)	Keynote Speaker Presentations	Pre-Conference workshops	INDIVIDUAL <b>\$175</b>
	14 April 2015 Meals covered for the day (morning tea, lunch and afternoon tea)	FREE	Plenary/workshop sessions	Papa Pounmau Hui (full day)	TABLE OF 10 <b>\$1,550</b>
	Keynote Speaker Presentations	Elected Representatives and Independent Commissioners Workshop	Exhibition	Elected Representatives and Independent Commissioners Workshop	BOOK NOW
			End of day networking drinks	Pecha Kucha Workshop	
EARLYBIRD <b>\$100</b> (NZPI Members) Onsite \$150	EARLYBIRD <b>\$150</b> (Non Members) Onsite \$175	14 April 2015 Includes lunch and afternoon tea	EARLYBIRD <b>\$465</b> (NZPI Members) Onsite \$495	B2F Conference	
A special discount is offered to Students courtesy of The University of Auckland		EARLYBIRD <b>\$150</b>	EARLYBIRD <b>\$535</b> (Non Members) Onsite \$585	15 and 16 April 2015 Meals covered for both days (morning tea, lunch and afternoon tea)	
	BOOK NOW	BOOK NOW	BOOK NOW	Keynote Speaker Presentations	
		Urban Design Forum		Plenary/workshop sessions	
		16 April 2015 Includes lunch and afternoon tea		Exhibition	
		EARLYBIRD <b>\$150</b>		End of day networking drinks	
		BOOK NOW		Gala Awards Dinner	
		Urban Experiments with Charles Montgomery Workshop		A ticket to the Gala Awards Dinner 6.30pm, Friday 17 April (includes pre function drinks/canapes)	
		16 April 2015 Includes lunch and afternoon tea		EARLYBIRD <b>\$775</b> (NZPI Members) Onsite \$825	
		EARLYBIRD <b>\$150</b> Onsite \$175		EARLYBIRD <b>\$825</b> (Non Members) Onsite \$925	
		BOOK NOW		A special discount is offered to Students	
				BOOK NOW	



THINK  
WHAT IS  
POSSIBLE

#B2FUTURE

**Please Note:** To qualify for EARLYBIRD prices, bookings must be made no later than 30 January 2015. All prices plus GST.

All registrations to the 2015 NZPI Conference and associated events are to be completed electronically via the website. NZPI will not be accepting any hand-written registrations. For any registration questions or issues, please contact:

WILNA EventSmart // 09 574 5989 // [wilna@eventsmart.co.nz](mailto:wilna@eventsmart.co.nz)

[www.nzpiconference2015.org.nz/](http://www.nzpiconference2015.org.nz/)

# THE NZPI WOULD LIKE TO THANK THE FOLLOWING SPONSORS

## REGIONAL HOST CITY PARTNER



## GOLD SPONSORS



## WELCOME RECEPTION & GALA AWARD DINNER



## SILVER SPONSORS



## BRONZE SPONSORS



## AFFILIATE PARTNERS



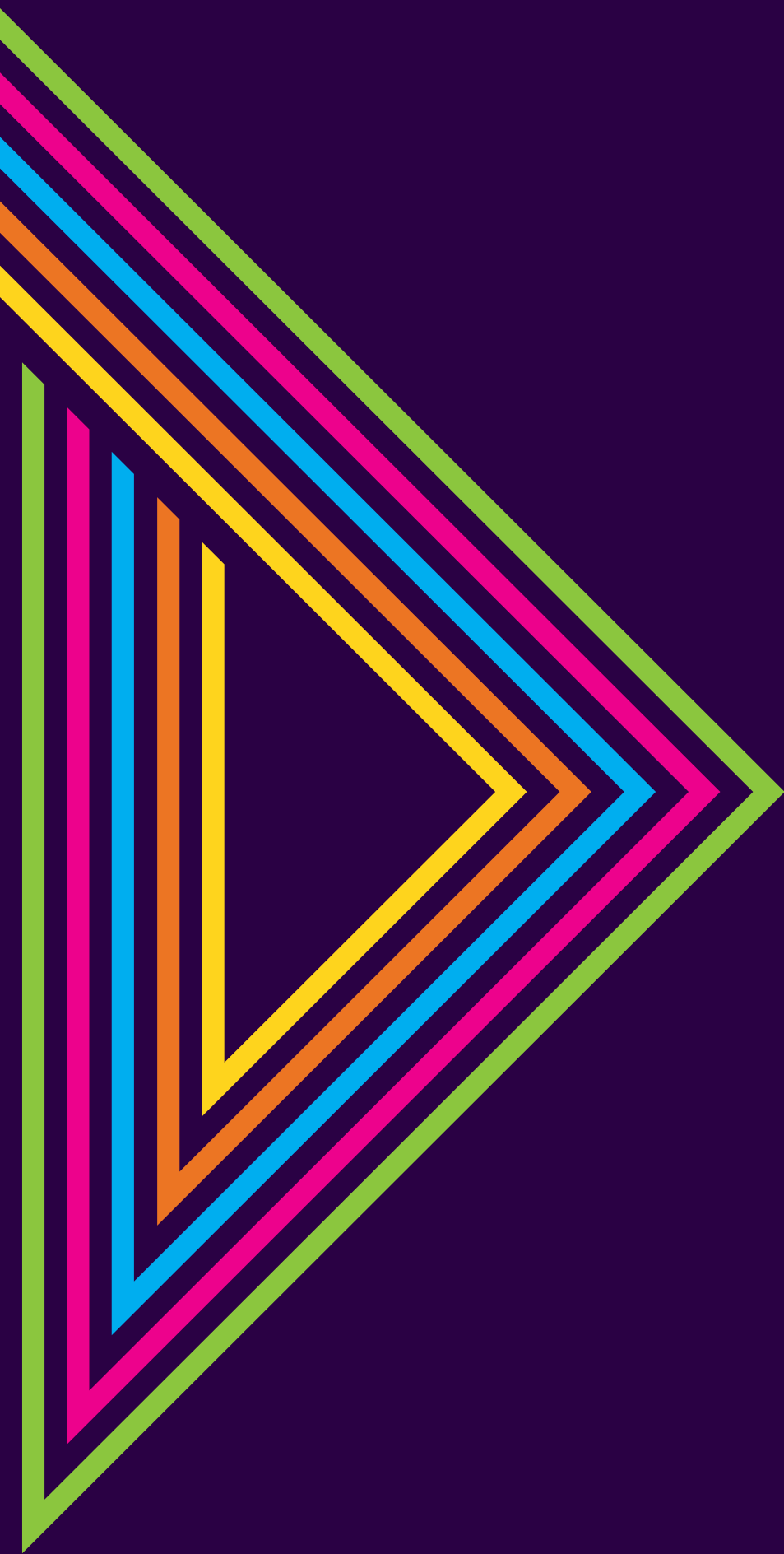
## BE A CONFERENCE SPONSOR

#B2FUTURE 2015 provides the opportunity to interact with a wide range of conference delegates, industry stakeholders and decision makers who want to update their knowledge, stay abreast of the latest trends and technologies and be exposed to new ideas and services. Sponsorship opportunities are available before, during and after the 2015 conference. These opportunities, in conjunction with an exhibition stand will provide your company optimum exposure.

We still have packages available for you to be involved in the NZPI 2015 Conference – if you are interested, please contact Jason Greiving, Events Manager, New Zealand Planning Institute [jason.greiving@planning.org.nz](mailto:jason.greiving@planning.org.nz)



[WWW.NZPICONFERENCE2015.ORG.NZ](http://WWW.NZPICONFERENCE2015.ORG.NZ)



**USING OUR  
HISTORY TO  
SHAPE THE  
FUTURE**

**#B2FUTURE**