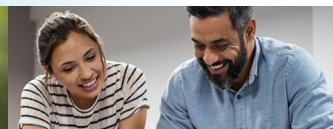


# ANNUAL REPORT 2019

---

*Planning together  
for a better New Zealand*



NEW ZEALAND  
**PLANNING INSTITUTE®**  
Te Kokiringa Taumata

*"By far the greatest and most admirable form of wisdom is that needed to plan and beautify cities and human communities"*

*Socrates*



## SUMMARY

### **"Planning is a respected profession, essential to achieving a better New Zealand."**

This simple statement is the core strength of our vision as an Institute. During 2019, we worked hard to bring that vision closer to reality by pursuing continuous improvement in operational activities, building relationships of influence with central government, and challenging our members to find their collective voice to champion all our profession has to offer. But we are not stopping there. This is an on-going journey, and while we

made positive steps in 2019, we believe we are just getting started. So, as we celebrate the successes of the past year, we encourage you to consider how we can build on these results to bring this vision closer to reality in 2020 and beyond.

2019 saw continued growth in our profession, highlighted by a rise in membership and attendance at the conference, as well as an increase in our influence within central government. This growth was underpinned by growth in our finances, with another surplus providing funds that the Board has directed

towards our priority strategic projects. 2019 also saw a continuation of our process of improvement, with reviews of the Constitution and Regulations and the Associate category and alternative membership pathway initiated.

Thank you to staff and volunteers across the profession who have helped us to deliver another successful year for the Institute and the planning profession. We look forward to continuing to work together to see our vision realised in the years ahead.



## CONTENTS

**4-15**

Year in Review

**16**

2018 Award  
Winners

**18**

Our Board and  
Officers

**19**

Our history

**20**

Draft Minutes  
2018 AGM

**22**

Financial  
Foreword

**23**

Independent  
Auditor's Report

**24**

Financial  
statements

**31**

Membership  
directory

**37**

2019 AGM Agenda



# THE YEAR IN REVIEW

## We are pleased to report on another year of development, growth and progress for the planning profession in 2019.

While the highlights have been many, the significant step we took in 2019 was lifting our collective eyes to look towards the horizon. In doing so, we have been able to consider and start to position the profession we champion for success in the future.

As a result, a number of strategic projects were initiated in 2019. Because of the scope and significance of these projects, some will roll into 2020 as work in progress. These strategic projects include the strengthening of our foundations through the development of governance tools such as our revised NZPI Financial Strategy (see opposite page) and the review of the Constitution and Regulations, with stage one due for completion late 2020. Targeting increased consistency across our processes, we are reviewing alternative membership pathways including the role of the Associate category, and our professional standards process, all of which will be completed in 2020.

We have also begun scoping the review of our education policies and professional development functions, looking to address critical issues such as agility, accessibility, the threat and opportunity of technology and the quality of learning outcomes being delivered.

Alongside these strategic projects, 2019 built on the work done previously to further strengthen our relationships with central government and other aligned professions including securing a place for a practitioner on the RM Reform Panel – a joint effort between NZPI and RMLA – as well

as having input in scoping the terms of reference for the review and providing submissions on a range of policy topics across multiple central government ministries.



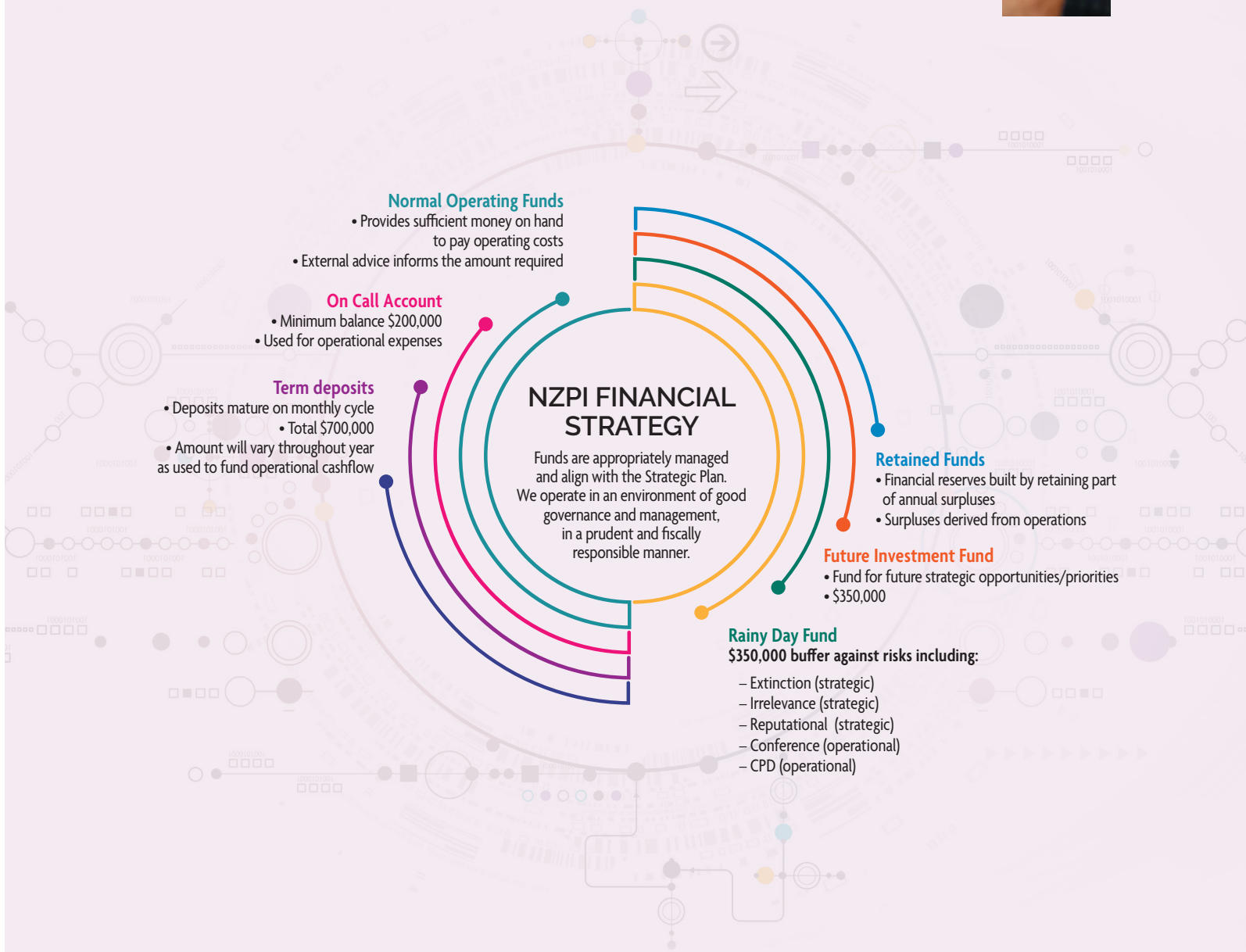
2019 also saw a cementing of our international partnerships, including a delegation attending the PIA Conference and joining the PIA Board meeting to observe how their governance function operates, as well as having PIA representatives at our Conference and in attendance at our Board meeting. We worked with PIA throughout the year on policy research initiatives, which helped shape our submissions and has seen the development of draft NZPI policy positions activated. Look for these policy positions to be circulated for comment in 2020. We also increased our work with the Commonwealth Association of Planners and the Global Planners Network.

The quality of the planning work being undertaken in New Zealand was recognised by the Commonwealth Association of Planners, with a local project winning their International Excellence in Planning Award for the second year running. Our work with the Global Planners Network has included the formation of an international committee comprised of the CEO's of PIA, APA, CIP, RTPI, and NZPI, to look at member transfer and recognition of each other's qualifications.

It should come as no surprise that it has taken significant energy and commitment by many to achieve this progress.

We want to thank all those involved, including members of the NZPI Board, who have provided support, guidance and challenge throughout 2019. We would also like to thank those involved in the delivery of services to our members, including the small, dedicated team in the national office, and the volunteers serving on branch committees, the local conference support committee, membership interview panels, the awards judging panel and PAC.

We particularly want to acknowledge the work of Caroline Miller, who continued to serve as Membership Convenor even after she stepped down from the Executive Committee. Caroline advised she was stepping back from this role at the end of 2019, and she leaves big shoes to fill. Caroline, you have our thanks.





# THE YEAR IN REVIEW

## NZPI Membership

NZPI continued its growth in 2019 with a 7% increase in membership over the 12-month period. This continues the strong growth of recent years and is a pleasing reflection on the value and importance of membership within our profession.

We welcome all new members and look forward to providing them with the services and support they need to develop as a professional planner in New Zealand.



## Communications

- 450,242 website page views
- 24,781 Jobs Board page views
- 23,096 Online Directory page views
- 19,478 Learning Centre page views
- 11,834 Membership page views

- 1,618 Facebook followers
- 1,767 LinkedIn followers
- 706 Twitter followers

## Conference and Events

The Central North Island branch hosted approximately 700 delegates in Napier for the 2019 NZPI Conference. The Conference theme was: **Nā tātau i whatu te tukutuku, he tūmatakahuki tā te iwi.** *The tukutuku was woven by us, but the people bind it together.*

The Conference gathered experts in the different strands of natural resources; settlements; climate change; practice and theory; and the future of planning. Across these strands ran the threads of leadership; integration and collaboration; Māori and indigenous planning; technology and science; and culture delivering a programme that entertained and challenged. The field trips provided the opportunity to experience Hawke's Bay, and the produce and beverages that the region is famous for were enjoyed at the social functions.

The Papa Pounamu Hui challenged the large number of delegates in attendance to think more broadly before the Conference even started. At the same time the Emerging Planners Congress opened the minds of those new to the profession, encouraging them to consider how they will help shape the future of our profession and our nation. We also introduced a new session, in conjunction with WSP, which saw local secondary students hear about planning as a career before sitting in on some of the Emerging Planners Congress and the Papa Pounamu Hui. This initiative will become a regular feature of our conference as we look to grow the numbers of planners in New Zealand.

Thank you to all who attended, and all who volunteered, for investing significant time and energy to deliver a conference where

delegates were encouraged to weave together different strands of knowledge and experience, as they considered how we respond to the challenges of creating a sustainable future.

It is also important to acknowledge the significance of the contributions of our conference sponsors. They ensure the conference continues to be a successful event. Particular thanks go to our Platinum Sponsor, WSP.

NZPI would like to thank all members of the Central North Island branch who

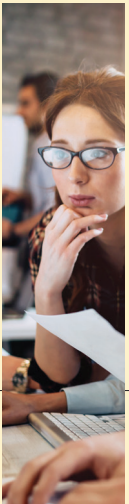


were involved in the organisation of the conference, and particularly the members of the local organising committee who worked tirelessly to make the conference a success.

The NZPI Event team also delivered another successful Environmental Compliance Conference, hosting over 150 delegates in Christchurch for two days of informative and engaging sessions plus a variety of social events, wrapping up with the gala dinner. While we are paid a fee to organise this conference, we support it with our knowledge and expertise, as we see direct benefits for our members. We want to thank the organising committee for their hard work and the trust they place in NZPI's ability to continually deliver a successful conference for their audience.

"Coming together is a beginning, staying together is progress, and working together is success."

Henry Ford





# THE YEAR IN REVIEW

## NZPI and Central Government

2019, particularly towards the end, was a very busy time for NZPI's policy function. Central government's Urban Growth Agenda has been translated into a raft of interventions into the planning space which has required a significant level of engagement from NZPI's head office and the board. This engagement and policy work was structured into several phases:

- NZPI policy research
- Member consultation
- Submission development

This was primarily aimed at supporting the development of NZPI's major submissions to central government for the year, which related to the following national guidance consultations and legislative reforms:

- NPS and National Guidance Urban Development
- NPS and National Guidance Highly Productive Solis
- The Resource Legislation Amendment Bill 2019
- NPS and National Guidance Freshwater Management
- Kāinga Ora Homes and Communities Bill 2019
- The Resource Management System Review.



NZPI's policy work was also directed at developing internal Board policy positions on: Urban Development (particularly rapid urban growth); Climate Change; Spatial Planning and Freshwater Management. Draft policy statements on Urban Development and Climate Change have been prepared. These respond to board workshop notes, and are the result of considerable research including analysis of the respective position statements of PIA, CIP and UK's RTPI & TCPA. These drafts will be out for consultation soon, while the remaining are work in progress.

Member consultation has been intense this year, and has focused on member surveys. Three surveys have been designed and conducted and each has produced particularly valuable information upon which to base submissions and to develop advocacy positions:

- The first of these was the Resource Management Planning Quality Survey. This survey was prepared to measure aspects of RMA planning practice and identify emerging issues. It was in pursuit of NZPI's strategic objective to deliver best planning practice in New Zealand. Key findings included the shortage of experienced planners in council consent departments, and that councils do not monitor development outcomes against plan objectives systematically enough.
- The second explored proposals set out in the Resource Management Amendment Bill 2019. A survey was circulated to the membership after the written submission period closed, on all of the 15 proposals. Over 250 responses were collected, and they include valuable qualitative information which will be analysed and compiled into a further submissions report for consideration by officials and the Select Ctte.

- The third explored member opinions about NZ planning system issues, and reform options that have emerged from international planning law research conducted by NZPI. A key finding was the huge level of member support for the statements: "Proposed changes to planning systems should be tested with practitioners to expose implementation



and operational issues before being made into legislation" and "The recent cluster of separate NPS's (Urban Development; Highly Productive Land; Freshwater Management; Biodiversity) lack integrated national direction and guidance on how they work together". Findings from this survey helped shape NZPI's submissions to the RM Review Panel.

It is expected this policy intensity will continue in 2020, so the Board have allocated some of the 2019 financial surplus to fund additional policy resource within the national office.

*"The axis of the earth sticks out visibly through the centre of each and every town or city."*

*Oliver Wendell Holmes, Sr*





THE YEAR IN REVIEW

Scholarships

The 2019 Reginald Hammond Scholarship was awarded to: Bridget Taylor.

CAP International Award

The winners of the 2019 CAP Awards for Outstanding Planning Achievement in the Commonwealth were announced on 9 November 2019 at the 50th anniversary conference of the Ghana Institute of Planners in Accra, Ghana. Entries were reviewed by the independent judging panel consisting of: Trudi Elliot CBE (Chair), Kristin Agnello, Dr Carol Archer, Viral Desai, Emeritus Professor Cliff Hague OBE and Professor Barbara Norman.



The 2019 awards attracted almost twice the number of entries as 2018, with entries relating to planning in a wide range of Commonwealth countries including: Ghana, Canada, New Zealand, Australia, Sierra Leone, British Virgin Islands, Dominica, St Lucia, Malaysia, Sri Lanka, Tanzania, Antigua and Barbuda, St Vincent & the Grenadines.

The judges were impressed by the breath and quality of this year's entries which covered the full range of commonwealth opportunities and challenges, not least those connected to the climate emergency. The shortlist reflected this diversity and the role planning and planners can play in shaping our commonwealth future whilst dealing with today's realities.



All the projects recognised in the Awards drew upon the sustainable development goals and contributed to their delivery.

The judges selected one overall winner, and for the second year running it was a New Zealand project that was selected. Our congratulations go to the Draft Waimakariri Residential Red Zone Recovery Plan by the Waimakariri District Council for winning the 2019 CAP Award for Outstanding Planning Achievement in the Commonwealth.

In selecting this project the judges noted that it was "an excellent example of a timely recovery and resilience plan that responded to complex land use and technical requirements, the needs of multiple stakeholders, and an exhausted and polarized public in a relatively short time frame. Disaster recovery is an international issue and the approach followed here is replicable in other Commonwealth countries. The submission highlights the critical role planners played and thoroughly linked the work to the Sustainable Development Goals."

Distinguished Service Awards

Each year NZPI recognises individuals who have made a significant contribution to the image and practice of planning, undertaken original research which has advanced the theory and practice of planning in New Zealand and overseas, made a major contribution to the affairs of NZPI, or achieved national or international recognition as a leader in the planning professions.

In 2019, we recognised the contributions of five members with Distinguished Service Awards. Recipients of the Distinguished Service Awards in 2019 were:

- *Reginald Proffit*
- *Amelia Linzey*
- *Christina Robertson*
- *Ken Gimblett*
- *Steve Markham*



PQ Magazine

Thanks to the hard work of the Editorial Committee, and all the contributors, PQ Magazine continues to be recognised as a valuable read for everyone in, and associated with, the planning profession.

NZPI thank Amelia Linzey for her continued leadership of the Editorial Committee, and the Editorial Committee, whose activities and attention to detail ensure the continued creditability of PQ and the thoughtfulness of its articles.

CPD

It was a full CPD calendar in 2019, with good attendance nationwide. 1,127 members and 259 non-members attended CPD courses during the year.

The two compulsory courses remained most popular. Our thanks go to Dean Chrystal, Jade Wikaira and James Whetu, the presenters for those courses. We appreciate the load you carry delivering these courses multiple times across the country so our Graduate and Intermediate members can progress to Full membership.

NZPI thank all the CPD presenters for delivering another successful and well-regarded year of professional development for our members.

2019 also signalled the start of a project to revitalise our CPD programme, focused on addressing the current limits around agility of content, remote accessibility of courses and the single face to face delivery model. This project will result in recommendations to the Board and a pilot of new approaches in 2020.



Education

In 2019, the Tertiary Accreditation Panel completed accreditation visits to Waikato and Lincoln universities. We are pleased to advise that the courses at both universities were re-accredited for a further five years. We greatly appreciate the time and energy of the volunteers on the panel, as well as the work of the staff at the universities which all goes into making the accreditation process a success. Our thanks go to panel chair Professor Robin Goodman, from RMIT in Melbourne, as well as panel members Sarah Dawson, Craig Batchelar and Reg Proffit.



PAC

Following on from the work completed in 2018 around the main membership pathway, PAC worked with the Board throughout 2019 to review the alternate membership pathway and the Associate category. This work is on-going and will be completed in 2020.

Our thanks to Alex Jepson for chairing PAC, and to all PAC representatives for their continued engagement and energy throughout 2019. We look forward to continuing the valuable work in 2020.

Professional Standards:

The Professional Standards Committee managed four complaints throughout the year. While more than in 2018, it is still pleasingly lower than 2017.



The accessibility provided by the internet, and the level of scrutiny now routinely applied to many hearings, reminds us of the need to always act in a professional and objective manner (as we are obliged to do as Members of the NZPI). Further, regardless of who is involved or the nature of the complaint, all complaints are investigated and considered as to whether further action is appropriate.

NZPI PSC complaints received, considered and concluded:	
2010	4
2011	3
2012	1
2013	1
2014	4
2015	1
2016	3
2017	7
2018	2
2019	4



# THE YEAR IN REVIEW

## Aotearoa Pacific Practitioners Group

The Aotearoa Pacific Practitioners Group (APPG) continues to connect Aotearoa planners across the Pacific Islands. The key contribution has been towards work on climate change, governance and housing through the Pacific Urban Forum 2019 held in Fiji.

As a special interest group, we continue to stand behind pacific values and our resource management practitioners. The drive from our founding members saw:

- 1. Representation of pacific values at the NZPI Conference in Napier, April 2019.
- 2. Agreement to the memorandum of understanding between Eastern Regional Organisation for Planning and Human Settlements (EAROPH) International, EAROPH Australia, Commonwealth Association of Planners and NZPI at the Pacific Urban Forum 2019 in Nadi. The intent of which is to establish closer links to exchange expertise and knowledge, capacity building, professional development, enhance cultural and historical understanding and to pursue collaborative, sustainable development projects in the Pacific.
- 3. Review of our strategic plan and set priorities for 2020 at the Annual General Meeting in Auckland, August 2019.

Our key movements for 2020 include:

- Supporting sustainable climate change movement in Aotearoa and the Pacific.
- Promoting the planning profession and pacific cultural world views in practice in Aotearoa.
- Support re-establishment of Pacific Island Planners Association 2 i.e. PIPA2 with EAROPH.
- Provide a pacific practitioner led mentoring programme.

- Contribute to local/central government legislative reviews and policy development.

Our talanoa takes place monthly, on the first Thursday led by Vishal Chandra, APPG Chair and Director - vUrbs Planning Services Limited. vUrbs Planning is the key sponsor of the APPG movements.



Vishal Chandra, MNZPI Chair, Aotearoa Pacific Practitioners Group.

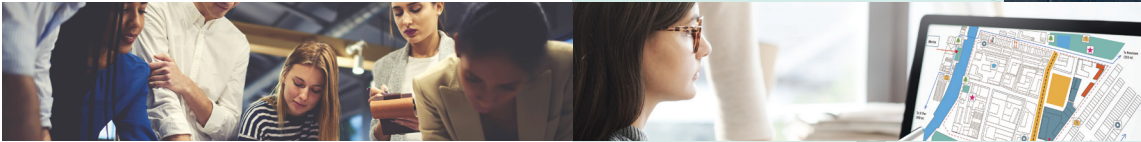
## Emerging Planners

2019 was another successful year for Emerging Planners throughout the country. The Emerging Planners Congress was held in Napier and the theme for the Congress was 'Weaving the Strands'. The Congress has always been scheduled on the same day as the Papa Pounamu Hui and this year the two schedules were combined so that Emerging Planners were able to attend a couple of the Papa Pounamu sessions which taught us how to incorporate Matauranga Maori into our everyday planning thinking. Another point of difference to Congress was the High School Forum, where high school students from the region were invited to attend a special session to highlight Planning as a career choice. This was so successful that it has been incorporated into the 2020 Congress schedule.

A small sub-committee of EP reps have continued to work with David Curtis, NZPI CEO, to review the EP Strategic Plan. The plan is at a final draft stage and we are excited to share the plan at the Emerging Planners Congress. Progress on the Action Plan has also been made and a draft of this

will be shared with Emerging Planners in the near future.

Throughout the year, Emerging Planner committees continued to engage with and support working and student Planners through a range of events. The What Are You Doing? (WAYD) series have become a staple event on committee calendars. Socialising and networking remain high priorities amongst Emerging Planners and we have been quick to take up opportunities with the other professions that we work so



closely with, including engineers, lawyers, surveyors and landscape architects.

Mentoring programmes continue to be launched throughout the regions with almost all of the regions having their programmes relaunched within the last two years. Having a mentor can hugely benefit and enrich your planning career and we encourage everyone to develop a mentoring relationship through their own organisations or through NZPI.

Moving into 2020, the Emerging Planners group will look to finalise the Strategic Plan and continue to develop the Action Plan. We will also be starting a review of the EP Framework and continue to assist PAC and the Board with the review of the Associate Member pathway to Full membership.



Tania Bryant, Int.NZPI National Emerging Planner Representative.

"Good fortune is what happens when opportunity meets with planning."

Thomas Edison





THE YEAR IN REVIEW

Papa Pounamu

Kia tau te rangimarie  
O te rangi e tū iho nei  
O Papatūānuku e takoto ake nei,  
O te taiao e awahi nei  
Ki runga i a tātou  
Tihei Mauri Ora!

He Mihi

Kei ngā maunga whakahii me ngā awa  
whakaterē, e ngā mana, ngā reo, ngā hau e  
whā tēnā koutou, otira, tēnā tātou katoa.

Ko Jade Wikaira tōku ingoa. Nō Ngāti  
Tūwharetoa, nō Te Whānau-a-Apanui, nō  
Ngāpuhi ahau. It was my privilege to be  
appointed as the Chair of Papa Pounamu  
in late 2019. The main focus has been to  
establish a kōmiti and come together to  
plan our work into the future.

Ko Wai Mātou?

Papa Pounamu represents a network of  
kaitiaki and planning practitioners working  
in the areas of resource management and  
environmental matters. Our focus is to  
ensure the integrity of mātauranga Māori,  
and that the values of Māori as Treaty of  
Waitangi partners, tangata whenua, kaitiaki  
and as part of the general population are  
appropriately and respectfully captured  
and integrated into resource management  
planning and decision-making.

During the reporting year, we have been  
actively engaged in the discussion around  
the future of planning in New Zealand,  
through on-going engagement in the RM  
Reform Process, including meeting with  
the RM Reform Panel and submitting on  
the issues and options paper alongside  
NZPI. A full copy of the submission can be  
found on the NZPI website.

We look forward to catching up with  
whānau, friends and colleagues at the  
2020 Papa Pounamu hui in Nelson.

I roto i ngā mihi,  
Te Kōmiti o Papa Pounamu



**Jade Wikaira,  
Chairperson**  
(Ngāti Tūwharetoa, Te  
Whānau-a-Apanui,  
Ngāpuhi). *Current role:*  
Principal Consultant,  
Director, Wikaira

Consulting Limited. *Location:* Wellington.  
*Qualifications:* Master of Business  
Administration; Bachelor of Planning  
(Hons)(Auckland); RMA Independent  
Commissioner Accreditation.



**James Whetu,  
Deputy Chairperson**  
NZPI Associate.  
(Waikato, Ngāti  
Tūwharetoa, Ngāti  
Raukawa). *Current role:*  
Principal Planning

Consultant, Director. *Location:* Ngāruāwahia,  
Waikato. *Qualifications:* Master of Planning,  
Bachelor of Resource and Environmental  
Planning; (Massey); RMA Independent  
Commissioner Accreditation.



**Siani Walker**  
MNZPI (Te Āti Haunui-  
a-Pāpārangi, Ngāti  
Tamakopiri, Ngāti Rangī,  
Ngāpuhi/Ngāti Kahu ki  
Whaingaroa).

*Current role:* Resource  
Management Planner, Bentley & Co.  
*Location:* Auckland. *Qualifications:* Master  
of Planning, Bachelor of Planning  
(Auckland).



**Dee Isaacs**  
(Te Aupōuri,  
Ngāti Tūwharetoa,  
Whanganui). *Current role:*  
Principal Planner,  
Chief Planning Office,

Auckland Council. *Location:* Auckland.



**Hinetākoha Viriaere**  
(Ngāti Awa, Ngāti  
Kahungunu, Ngāti  
Tūhoe; Ngāti Tāne  
(Mangaia, Cook  
Islands). *Current role:*  
Kauihakamahere

Matua, Senior Planner, Wairoa District  
Council. *Location:* Wairoa, Hawkes Bay.  
*Qualifications:* Master of Resource and  
Environmental Planning (Distinction);  
Bachelor of Resource and Environmental  
Planning (Hons) (Massey).



**Vishal Chandra**  
MNZPI, Chair of NZPI  
Aotearoa Pacific  
Practitioners Group.  
*Current role:* Principal  
Planning Consultant,  
vUrbs Planning Services

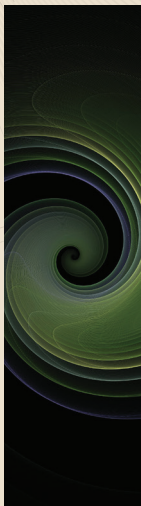
Limited. *Location:* Queenstown, Otago.  
*Qualifications:* Masters Coastal Tourism  
Planning (Pacific Islands), Bachelor of  
Planning Hons (Auckland).



NZPI appreciates the ongoing work of  
Papa Pounamu in this critical reform process.



Ki te kahore he  
whakakitenga ka ngaro te iwi.  
Without foresight or vision  
the people will be lost.





# THE YEAR IN REVIEW

## NZPI National Awards

The 2019 awards judging panel were faced with a difficult task of having to decide between a diverse range of highly-deserving projects and award nominees. The quality of entries meant, as well as selecting the winners in each of the Best Practice award categories, the Award Committee also recognised four projects as Highly Commended. The winners were announced at the Gala Dinner at the NZPI Conference in Napier.

We wish to thank all the nominees for the work they put into showcasing a variety of exceptional projects. Congratulations to all award winners.

## Award Winners

### Nancy Northcroft Supreme Planning Practice Award

*Project: Supporting Community-led Planning and Placemaking.*

#### Winners:

- Christchurch City Council - Urban Design, Regeneration & Heritage Unit.
- Christchurch City Council - Community Support, Governance & Partnership Unit.

### Best Practice District/Regional Planning

*Project: Regional Coastal Plan – Kermadec and Sub Antarctic Islands.*

#### Winner:

Department of Conservation.

### Best Practice Strategic Planning and Guidance

*Project: Wellington City District Plan Pre-1930 Character Area Review*

#### Winners:

- Greg Vossler, Boffa Miskell
- Hayley Hume-Merry, Boffa Miskell
- Marc Baily, Boffa Miskell
- Kate Pascall & Team, Wellington City Council
- Ian Bowman

### Best Practice Integrated Planning and Investigations

*Project: Te Putahi: The Confluence – Cultural Impact Assessment Report for Growth Precinct 4, Feilding.*

#### Winners:

- Cynthia Ward, Project Manager, Manawatu District Council
- Dennis Emery, Ngā Kaitiaki o Ngāti Kauwhata
- April Bennett, Resource & Environmental Planning Programme, Massey University
- Brent Limmer, Project Sponsor, Manawatu District Council

### Best Practice Consultation and Participation Strategies and/or Processes

*Project: Whaka-Ora Healthy Harbour, Whakaraupō Catchment Management Plan.*

#### Winners:

- Te Hapū o Ngāti Wheke Inc
- Te Rūnanga o Ngāi Tahu
- Lyttleton Port Company Ltd
- Environment Canterbury
- Christchurch City Council

### Best Practice Non-Statutory Planning

*Project: Supporting Community-led Planning and Placemaking.*

#### Winners:

- Christchurch City Council - Urban Design, Regeneration & Heritage Unit
- Christchurch City Council - Community Support, Governance & Partnership Unit.

### Rodney Davies Project Award

*Project: Kuaka Gateway, SH2/SH2A/ Watchman Road.*

#### Winners:

- Nick Aiken
- NZ Transport Agency
- Napier City Council
- Hawkes Bay Airport
- Michele Frey
- Andrew Sowersby
- WSP Opus.

### Lance Leikis NZPI Young Planner Award

**Winner:** Courtney Bennett

### Alfred O. Glasse Award

**Winner:** David Gibbs, Construkt Associates Ltd.

### Wallace Ross Graduate Research Award

**Winner:** Emily McEwan.

## Additional Highly Commended Projects

### Best Practice Award - District/Regional Planning

*Project: Shaping Our City: The Palmerston North City Sectional District Plan Review.*

#### Winners:

- Palmerston North City Council

### Best Practice Consultation and Participation Strategies and/or Processes

*Project: 25 Years of the Charter of Understanding / He Huarahi mō Ngā Uri Whakaturu.*

#### Winners:

- Dean Whaanga, Kaupapa Taiao Manager, Te Ao Marama Incorporated
- Don Mowat, Chair – Te Ao Marama
- Michael Skerrett
- Ken Swinney – On behalf of the participating local authorities.

### Best Practice Non-Statutory Planning

*Project: Tūhoromatanui: Ngā Potiki Environmental Plan 2019-2029*

#### Winners:

- Ngā Potiki a Tamapahore Trust
- Conroy & Donald Consultants Limited
- Ngā Potiki Resource Management Unit.

### Best Practice Non-Statutory Planning

*Project: Kwajalein Atoll Masterplan.*

#### Winners:

- Beca International Consultants Ltd
- Kwajalein Atoll Development Authority.



Nancy Northcroft Supreme Planning Practice Award



Best Practice District/Regional Planning



Best Practice Strategic Planning and Guidance



Best Practice Integrated Planning and Investigations



Best Practice Consultation and Participation Strategies and/or Processes



Best Practice Non-Statutory Planning



Rodney Davies Project Award



Lance Leikis NZPI Young Planner Award



Alfred O. Glasse Award



Wallace Ross Graduate Research Award



# OUR BOARD AND OFFICERS

## NZPI BOARD



Karyn Sinclair *Chair*  
Luke O'Dwyer *Deputy Chair*  
Andrea Harris *Board member*



Graeme McCarrison *Board member*  
Jonathan Cleese *Hon. Treasurer/Secretary*  
Orchid Atimalala *Board member*



Reginald Proffit *Co-opted (non-voting)*  
Sarah Jenkin *Board Member*  
Shane Roberts *Board member*

## NZPI OFFICERS



David Curtis *CEO*  
Joel Cayford *Senior Policy Advisor*  
Vanessa White *Events Manager*



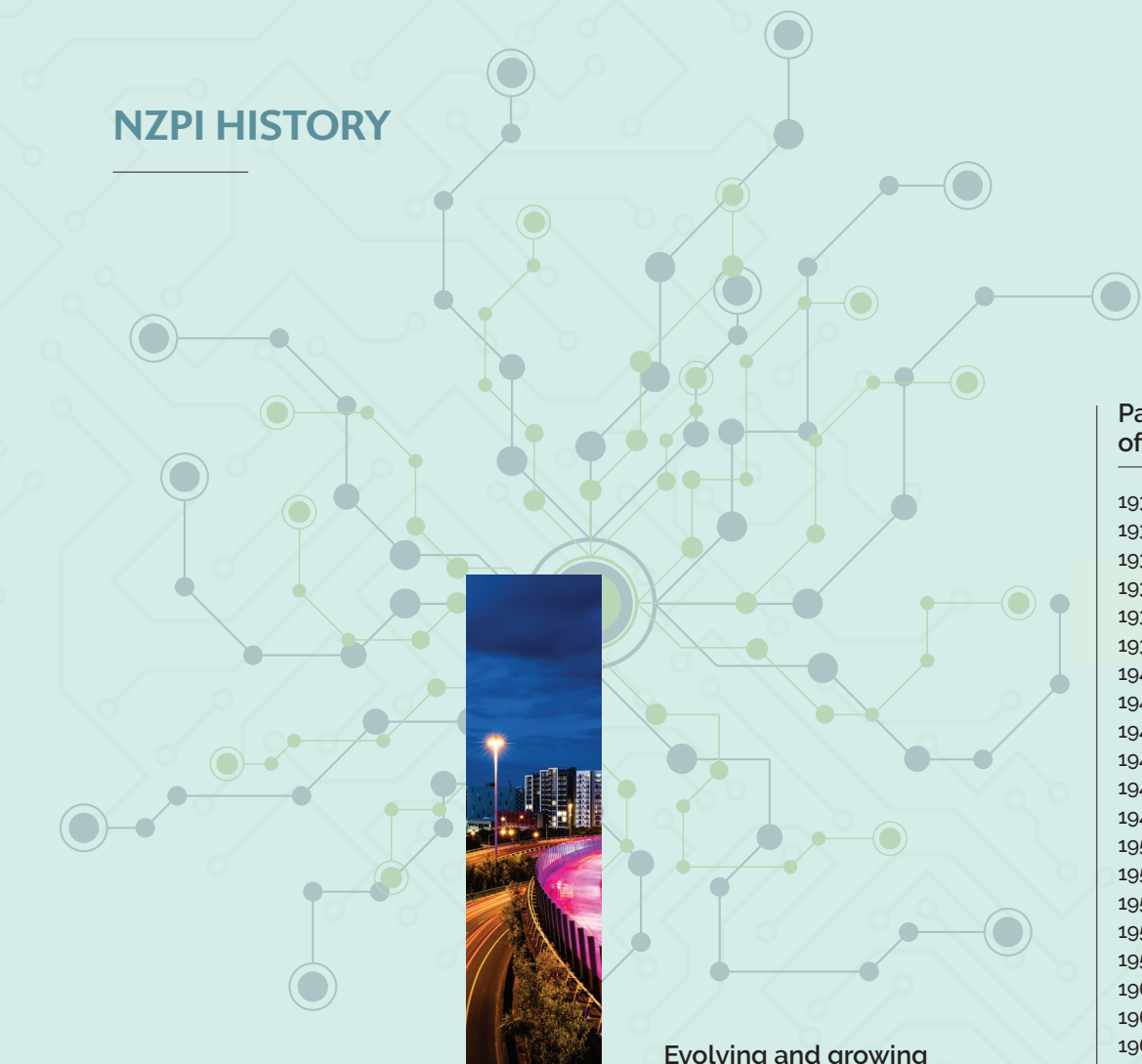
Melissa Hubbard *Sales & Marketing Co-ordinator*  
Manfred Lee *Membership & Operations Manager*  
Savana Carroll *Office Administrator*



Anna Montgomery *Membership Co-ordinator*  
Kirsten Orlandini *CPD and Events Co-ordinator*  
Lee Parlane *Administrator*



# NZPI HISTORY



## Past Presidents of the Insitute:

1931	H F Johnson K C
1931-1932	C K Grierson
1932-1935	S Blackley
1935-1936	A W De R Galbraith
1936-1937	H F Butcher
1937-1940	M G C McCaul
1940-1942	E H Andrews
1942-1943	A J Baker
1943-1944	R B Hammond
1944-1945	A H Bridge
1946-1947	J W Mawson
1947-1950	R B Hammond
1950-1952	C E H Putt
1952-1954	F C Basire
1954-1956	F W O Jones
1956-1958	A L Gabites
1958-1960	J W Cox
1960-1962	D G Porter
1962-1964	I B Reynolds
1964-1967	I G Dunn
1967-1969	N Northcroft
1969-1970	P W T Bagnall
1970-1972	D J Edmonson
1972-1973	M M Latham
1973-1975	K G Dobbie
1975-1977	F W Norton
1977-1979	R J P Davies
1979-1981	M E Jones
1981-1984	W D Ross
1984-1986	W A Robertson
1986-1988	D D Hinman
1988-1990	John Childs
1990-1992	Sylvia Allan
1992-1994	Lance Leikis
1994-1996	Leigh Auton
1996-1998	Jenny Dixon
1998-2000	Robert Schofield
2000-2002	Michael Foster
2002-2004	Paula Hunter
2004-2006	Cheryl Cleary
2006-2008	Michael Gunder
2008-2010	Hester den Ouden
2010-2012	Jane Douglas
2012-2017	Bryce Julyan
2017-current	Karyn Sinclair

## Evolving and growing since 1931

The leading planning association in New Zealand, like the planning profession it serves, has evolved over many decades and so too has its name; ranging from the Town Planning Institute of New Zealand between 1931-1946, to its current name of The New Zealand Planning Institute from 1969.

Throughout its various guises, five in all, the organisation has been led by 45 esteemed planners.

In 2012, the title of 'President' was replaced by that of 'Chair'. The current Chair is Karyn Sinclair.





# 2019 DRAFT AGM MINUTES

Thursday 4 April 2019, 5.25pm  
Municipal Theatre, Napier

### Attendance

Karyn Sinclair, Luke O'Dwyer, Jonathan Clease, Graeme McCarrison, Orchid Atimalala, Andrea Harris, Sarah Jenkin, Shane Roberts, Reg Proffit, Herbert Famliton, Emily Greenberg, Juliet Johnson, Sally Elford, Grey Wilson, Stephen Wynne-Jones, Robert Schofield, Caroline Miller, Nick Aiken, Charlie Hopkins, David Batchelor, Jan Crawford, Rebecca Lloyd, Michelle Grinlinton-Hancock, Philip McKay, Colin Comber, James Whetu, Christine Coste, Aaron Ingoe, Anne McNoe, Ueli Sasagi, Vishal Chandra, Tuvhakairi ora O'Brien, Kataraina O'Brien, Christian McDeane, Luke McSorley, Joel Cayford, Genevieve Doube, Craig Mallett, Bryce Julian, Denise Anderson, Mike Foster, Jane Douglas, Pam Butler, Jenny Harrison, Emma Fergusson, Jo Wilkins, Mark von Dadselzen [Honorary Solicitor], Eileen von Dadselzen, Dean Chrystal, Wendy Saunders, Ro Cudby, Sarah Heritage, James Bell.

### Apologies

Alan Withy, Alan Watson, Andrew Ralph, Carey Pearce, Clare Piper, Christine Ralph, David Forrest, Holly Gardiner, Ivan Thomson, Janine Sowerby, Joanne Lewis, Joao Machado, John Childs, Julie Bevan, Mark Dyer, Richard Harkness, Kirstin Tebbutt, Namouta Poutasi, Mark Smelrin, Andrew Willis.

### Welcome

Karyn Sinclair (Chair) declared the meeting open and welcomed everyone. Advised agenda for meeting is in Annual report on page 21. Reginald Proffit lead attendees in a Karakia. Karyn introduced the NZPI Board – Karyn Sinclair (Chair), David Curtis (CEO), Luke O'Dwyer. Johnathan Clease, Graeme McCarrison, Orchid Atimalala, Andrea Harris, Sarah Jenkin, Shane Roberts, Reginald Proffit.

### Matters arising from previous minutes

Karyn advised that the minutes from the 2018 AGM are in the Annual Report which was distributed in accordance with the timeframes set out in the Constitution and have already been confirmed by the Board. No matters raised from the floor regarding the minutes of 2018 AGM.

### Annual Report, Karyn Sinclair, NZPI Chair

2018 marked a turning point for NZPI, with a shift from an operational focus around rebuilding reserves and changes in staff to identifying the opportunities and challenges coming and the gaps in our structures, systems, processes and policies that we need to address to be ready for these opportunities and challenges.

This shift wouldn't have been possible without the oversight provided by the previous Board, and we acknowledge their work. Our thanks to those who stepped down at 2018 AGM - Bryce Julian; Julie Bevan; Gary Rae; Todd Whittaker; Keith Hovell and those who were willing to serve another term on the Board – Karyn Sinclair, Sarah Jenkin and Luke O'Dwyer.

We also take this opportunity to thank all those who put themselves forward for election for being willing to serve the profession on our governance Board. Congratulations to those who were elected – Andrea Harris; Graeme McCarrison; Orchid Atimalala; Jonathan Clease and Shane Roberts. We also reappointed our Co-opted Maori Voice, Reginald Proffit. Our profession is dependent on the willingness of members to volunteer including to serve on the Board.

As Chair I want to thank the Board for their hard work and engagement over the last 9 months of 2018 as you have worked together to develop a list of priorities areas that we need to focus on to take the profession forward.

2018 was a successful year that built on the success of 2017. This success allowed for additional support of important strategic developments, such as the reduced fee for attendance at the two mandatory membership courses.

However, to really see how far we have come I have looked back ten years to 2008. In the last ten years membership has grown by 40%, topping 2,600 members in 2018. The growth in membership has been accelerating over the last few years, with 4% growth in 2016, 6% growth in 2017 and 8% in 2018. Revenue has also increased in the last ten years, up almost 60% since 2008.

In 2008, we also inducted our first 8 Fellows. In 2018, we inducted another 4, taking us to 18 Fellows in total. We welcome the members inducted as Fellows in 2018 - Alan Watson; Bryce Julian; Caroline Miller; and David Forrest. Thank you for all you have done for the planning profession over your careers – and we look forward to seeing you continue to drive the profession forward.

Other highlights from 2018 include the Breaking New Ground Conference which saw 700 delegates gathered in Tauranga to hear keynote speakers Erin Barnes, David Dixon, Jamie Fitzgerald, Richie Poulton, Ian Proudfoot, Paul Spoonley and Jacinda Ruru, to participate in the various workshop streams, to gather at the social functions, and to celebrate the profession at the Gala Dinner. We thank the Local Organising Committee for all the hard work they put in to make sure the 2018 conference was a success.

We had our annual awards, with the winners announced at the Gala Dinner. Congratulations to all winners and especially to New Plymouth District Council and Isovist on winning the Nancy Northcroft Supreme Practice Award

Along with inducting 4 new Fellows of the institute we recognised 5 members with DSA's. Congratulations to Don Lyon; Joy Grant; Julie Bevan; Mark St Clair and William Wasley on receiving this recognition.

The CPD programme continued to be well supported with 1,455 planners attending 84 different courses through 2018. We were pleased to see the popularity of the two mandatory courses, with over 600 members attending these courses in 2018. We also secured financial support from MfE in recognition that the new Economics of Urban Development course was addressing a specific capability gap they were concerned about. This is the first time we have received this type of support for a CPD course and we were pleased to be able to pass this support straight onto members through a reduced price for this course.

We appointed a new Tertiary Accreditation Panel. I would like to thank those who served on the outgoing panel - Professor Robert Freestone (Chair); Kataraina O'Brien; Ivan Thomson; Craig Batchelar; and Sarah Dawson. I also want to thank those who nominated to serve on the new panel. The new panel has been ratified and is Professor Robin Goodman (RMIT, Melbourne - Chair); Sarah Dawson; Craig Batchelar and Reginald Proffit.

PAC finalised the review of the main membership pathway and have worked with the Board to scope out a review of the Associate category and the alternate pathway. These reviews will be undertaken this year.

In the Policy space it was quieter year as the new government settled in and determined its priorities. We did make submissions on topics such as new public infrastructure body and the like as well as meeting with Ministers Parker and Twyford to find out more about their policy agenda and with Minister Twyford again around work on MHUD and NUDA.

2018 was a quiet year for the PSC with only two complaints to be handled. Thanks to members of the PSC for their hard work helping our members uphold the reputation of the profession.

### Thanks from Chair

I want to end by thanking my fellow Board members, all who serve on our Branch committees and in our special interest groups - Emerging Planners, Papa Pounamu and Aotearoa Pacific Practitioners Group. Thanks to our Supporter Organisations and our Conference Sponsors, especially WSP Opus who were our first Platinum sponsor and have continued this level of support for 2019 and 2020. On behalf of the board I want to thank the staff in the national office and finally to all of you, our members. Thanks for a successful 2018.

### Annual Accounts, Jonathan Clease, Treasurer

2018 was financially successful with a surplus above budget and we thank David, the staff in the national office and the volunteers – especially the Conference Local Organising Committee – for delivering this result. The surplus was intentionally lower than 2017. This was due to two key decisions.

Firstly, CPD income was significantly down from 2017. This is a direct result of the reduced price for the mandatory courses. The high number of members taking these courses is very pleasing, but it did impact on both the income we generated from these courses and the availability of members to enrol in other courses. However, we see this support for members progressing to Full membership as strategically important and so we have carried this support for these two courses into 2019.

Secondly, other income we generate was down from 2017. This is due to the finishing of a contract we had with the MfE for the hosting and administration of the Quality Planning website.

The income for 2018 was slightly lower than budgeted due to the impact of the above factors. Expenses also increased in 2018, but at a rate lower than we had budgeted for. This, along with continued careful management of all spending, resulted in annual expenses being lower than budgeted. However, the trend of increasing expenses is expected to continue as we face increasing costs across all areas of the organisation. The challenge to David is to continue to manage the operations of the Institute within our financial means.

I am pleased to advise that the budget for 2019 has been set to deliver a surplus of just over \$100,000. I am also pleased to advise we are tracking well against this budget so far.

The 2018 result of a surplus of \$180k has enabled us to finish the rebuilding of the Institutes reserves – we finished the year with sufficient cashflow for operational requirements and \$1,000,000 on deposit with the bank. We also have additional funds from the surplus to support the strategic initiatives we have prioritised as a Board.

### Looking ahead to 2019, Karyn Sinclair

The new Board spent a significant amount of time in 2018 looking at the challenges and opportunities that we believe are coming for the profession. These ranged from the need to change structures, processes and policies in response to the growth and success of the last few years to the need to prepare for the impact of new technologies and central government legislative changes. The outcome of this process has been the identification of 5 key initiatives that the Board have identified as priorities for this term. They are:

- Update the Institutes governance structures and documents
- Develop and implement a financial strategy

- Align and consolidate our membership pathways
- Review our external relationships
- Implement a fit for purpose 'all of career' professional development programme.

It has rightly taken time to agree on these priorities, and now we have an ambitious work programme planned. The immediate steps we are taking to meet these strategic priorities are as follows:

#### Governance structures and documents:

We have agreed to a two-stage review of the constitution. Stage 1 includes three main priorities:

- Formalise the work done over the last 24 months to bring Māori representation onto the NZPI Board. It is proposed that this will include formalising the currently co-opted position as a full voting member of the Board
- A structural change to our current governance documents to allow the Institute to be more responsive to change in our profession. This includes setting the Constitution as the foundation document and building on it a suite of documents under the Rules and Regulations. This will cover areas of the current Constitution such as the strategic plan, code of ethics, professional standards, and membership requirements.
- An administrative and legislative tidy up of the Constitution. Currently the Constitution is difficult to engage with and it has some errors that we need to address. Additionally, we are expecting new legislation for incorporated societies. This legislation has been under development for more than 3 years and we expect it to be enacted in the next 12 months. So as much as possible we intend to allow for the changes expected under this new legislation. Stage 2 will then look at a more comprehensive review of the Board structure, election processes etc. David and various Board members will look to meet with each Branch to go over the proposed changes to the Constitution and gather feedback in the next 6–8 weeks. We encourage you to come along and engage with this process.

#### Financial strategy

We have already secured external advice on the development of an appropriate financial strategy for the organisation. This includes a framework for operational performance, which is summed up in two simple statements: "always operate within our means" and "earn the money before we spend the money". Therefore, the challenge to David and his team is to continue to provide, and achieve, annual budgets that deliver a surplus to the Institute. The challenge to the Board is to ensure that these surpluses are applied to areas that progress our strategic plan.

The financial strategy will provide a framework for how reserves are set and managed and an analysis of the financial risks the organisation faces and strategies for how these are managed. Work on this financial strategy is progressing quickly and we expect to be able to release this strategy later this year.

#### Membership pathways

We are working with PAC to review the Associate category and the alternate membership pathway. This review is expected to take another 12 months to complete and we encourage all members to engage with the review through their PAC representative.

#### External Relationships

The Board are in the process of reviewing the Institutes external relationships. The key output of this will be agreement regarding which relationships we foster, how we engage with these external partners and what operational or strategic benefits are we expecting each relationship to provide.

#### Fit for purpose Education and CPD

We have started a review of the current education and CPD courses. This includes a survey of emerging planners and employers around how education prepared the member for the workplace/profession and direct engagement with our accredited universities and other key stakeholders such as central government. This has already kicked off with work started to organise the university and stakeholder sessions. The survey of emerging planners and employers will be out in May. This information gathering process will result in recommendations to the Board about what, if any, changes we need to make to our accreditation and CPD programmes and how we go about progressing these recommendations. The Board expect to receive these initial recommendations later this year.

As a Board, we are committed to ensuring the Institute continues to provide quality services and support to our membership, while continuing to evolve to meet the challenges and maximise the opportunities we see coming over the horizon. We welcome your feedback and input on these priority areas.

### Appointment of Auditors

The membership delegated to the Board the authority to appoint the accountant and auditors for 2019.

### General Business

David Curtis noted a vote of thanks from Commonwealth Association of Planners for NZPI support, particularly administration of the website.

**Karyn Sinclair declared the meeting closed at 6:20 pm.**



## FINANCIAL FOREWORD

Following the pattern of the last few years, and in line with our stated position of 'earning funds before we spend them', the Institute has again delivered a surplus for the 2019 financial year of \$179,814. This is ahead of budget, and continues to strengthen our financial position as well as signalling that changes over the last few years have corrected operational issues, ensuring that we are financially sustainable going forward.

As part of the Board's work plan we reviewed our financial strategy, with a particular focus on the level of reserves we should maintain and how these reserves should be tagged. As shown in the graphical representation of the financial strategy (see page 5 of this report), following external advice and analysis of both our operational and strategic requirements, we have increased the total amount we hold in reserve. We are now working towards ensuring that we hold this level of reserves, and that it is prudently managed to provide an appropriate return to the Institute without exposing us to unacceptable investment risk.

The delivery of another positive financial result is thanks to the hard work of the staff in the national office; the NZPI Board; a number of volunteers, including the local conference support committee; and our members, who support our CPD programme, attend our annual Conference and local branch events.

We thank you all for your hard work and support.

Jonathan Cleese  
Hon Treasurer / Secretary



## INDEPENDENT AUDITOR'S REPORT

### To the members of the New Zealand Planning Institute Incorporated

#### Opinion

We have audited the financial statements of New Zealand Planning Institute Incorporated ('the entity'), which comprise:

- the statement of financial position as at 31 December 2019;
- the statement of comprehensive revenue and expenses for the year then ended;
- the statement of changes in net assets/equity for the year then ended;
- the statement of cash flows for the year then ended; and
- the notes to the financial statements, which include significant accounting policies.

In our opinion, the accompanying financial statements on pages 24 to 30 present fairly, in all material respects, the financial position of New Zealand Planning Institute Incorporated as at 31 December 2019, and its financial performance and its cash flows for the year then ended in accordance with Public Benefit Entity Standards Reduced Disclosure Regime issued by the New Zealand Accounting Standards Board.

#### Basis for opinion

We conducted our audit in accordance with International Standards on Auditing (New Zealand) (ISAs (NZ)). Our responsibilities under those standards are further described in the Auditor's responsibilities for the audit of the financial statements section of our report.

We are independent of the entity in accordance with Professional and Ethical Standard 1 (Revised) Code of Ethics for Assurance Practitioners issued by the New Zealand Auditing and Assurance Standards Board, and we have fulfilled our other ethical responsibilities in accordance with these requirements.

We believe that the audit evidence we have obtained is sufficient and appropriate to provide a basis for our opinion.

Other than in our capacity as auditor we have no relationship with, or interests in, the New Zealand Planning Institute Incorporated.

#### Other information

The executive board are responsible for the other information. The other information comprises the New Zealand Planning Institute Incorporated 2019 annual report on pages 1 to 22 and 31 to 39 (but does not include the financial statements and our auditor's report thereon), which we obtained prior to the date of this auditor's report. Our opinion on the financial statements does not cover the other information and we do not express any form of audit opinion or assurance conclusion thereon.

In connection with our audit of the financial statements, our responsibility is to read the other information identified above and, in doing so, consider whether the other information is materially inconsistent with the financial statements or our knowledge obtained in the audit, or otherwise appears to be materially misstated. If, based on the work we have performed on the other information that we obtained prior to the date of this auditor's report, we conclude that there is a material misstatement of this other information, we are required to report that fact. We have nothing to report in this regard.

#### Responsibilities of the executive board for the financial statements

The executive board are responsible, on behalf of the entity, for the preparation and fair presentation of the financial statements in accordance with Public Benefit Entity Standards Reduced Disclosure Regime, and for such internal control as those charged with governance determine is necessary to enable the preparation of financial statements that are free from material misstatement, whether due to fraud or error.

In preparing the financial statements, the executive board are responsible, on behalf of New Zealand Planning Institute Incorporated, for assessing the entity's ability to continue as a going concern, disclosing, as applicable, matters related to going concern and using the going concern basis of accounting unless the executive board either intend to liquidate the entity or to cease operations, or have no realistic alternative but to do so.

#### Auditor's responsibilities for the audit of the financial statements

Our objectives are to obtain reasonable assurance about whether the financial statements as a whole are free from material misstatement, whether due to fraud or error, and to issue an auditor's report that includes our opinion. Reasonable assurance is a high level of assurance but is not a guarantee that an audit conducted in accordance with International Standards on Auditing (New Zealand) will always detect a material misstatement when it exists. Misstatements can arise from fraud or error and are considered material if, individually or in the aggregate, they could reasonably be expected to influence the decisions of users taken on the basis of these financial statements. A further description of the auditor's responsibilities for the audit of the financial statements is located at the XRB's website at: [xrb.govt.nz/Site/Auditing\\_Assurance\\_Standards/Current\\_Standards/Page8.aspx](http://xrb.govt.nz/Site/Auditing_Assurance_Standards/Current_Standards/Page8.aspx)

#### Who we report to

This report is made solely to the members, as a body. Our audit has been undertaken so that we might state to the members those matters we are required to state to them in an auditor's report and for no other purpose. To the fullest extent permitted by law, we do not accept or assume responsibility to anyone other than the Institute and the members as a body, for our work, for this report, or for the opinions we have formed.

RSM Hayes Audit  
16 March 2020  
Auckland



## STATEMENT OF FINANCIAL POSITION

As at 31 December 2019

	NOTE	2019 \$	2018 \$
<b>Assets</b>			
<b>Current Assets</b>			
Cash and cash equivalents	3	981,326	327,308
Prepayments	3	152,737	70,263
Receivables from exchange transactions	3	184,999	152,852
Short Term Investments	3	654,284	1,171,550
Total Current Assets		1,973,347	1,721,973
<b>Non-Current Assets</b>			
Property, Plant and Equipment	5	83,666	74,322
Long Term Investments	3	20,733	28,900
Work In Progress - Website		43,750	–
Total Non-Current Assets		148,149	103,222
<b>Total Assets</b>		<b>2,121,496</b>	<b>1,825,195</b>
<b>Liabilities</b>			
<b>Current Liabilities</b>			
Payables from exchange transactions	4	276,071	207,913
Employee benefits	4	62,152	50,308
<b>Total Current Liabilities</b>		<b>338,223</b>	<b>258,221</b>
<b>Non-Current Liabilities</b>			
Lease Liabilities	6	36,486	–
Total Non-Current Liabilities		36,486	–
Total Liabilities		374,709	258,221
<b>Net Assets</b>		<b>1,746,787</b>	<b>1,566,974</b>
<b>Accumulated Funds</b>			
Accumulated comprehensive revenue and expense		1,746,787	1,566,974
<b>Total Accumulated Funds</b>		<b>1,746,787</b>	<b>1,566,974</b>

## STATEMENT OF COMPREHENSIVE REVENUE & EXPENSE

For the year ended 31 December 2019

<b>Revenue</b>			
Revenue from exchange transactions	1	2,262,616	2,007,140
Total Revenue		2,262,616	2,007,140
<b>Expenses</b>			
Employee Costs	2	664,031	638,937
Depreciation & Amortisation	2	22,436	23,386
Other Expenses	2	1,433,411	1,203,810
Total Expenses		2,119,878	1,866,133
<b>Finance</b>			
Finance Income		37,077	39,573
Total Finance		37,077	39,573
<b>Surplus/(Deficit) for the year</b>		<b>179,814</b>	<b>180,580</b>
<b>Other comprehensive revenue and expense</b>		<b>–</b>	<b>–</b>
<b>Total Comprehensive Revenue and Expense for the year</b>		<b>179,814</b>	<b>180,580</b>

## STATEMENT OF CHANGES IN NET ASSESTS/EQUITY

For the year ended 31 December 2019

	Accumulated comprehensive revenue and expense	Total Equity
As at 1 January 2018	1,386,394	1,386,394
Surplus for the year	180,580	180,580
Other Comprehensive revenue and expense	–	–
Total Comprehensive revenue and expense for the year	180,580	180,580
<b>Balance as at 31 December 2018</b>	<b>1,566,974</b>	<b>1,566,974</b>
Surplus for the year	179,814	179,814
Other Comprehensive revenue and expense	–	–
Total Comprehensive revenue and expense for the year	179,814	179,814
<b>Balance as at 31 December 2019</b>	<b>1,746,787</b>	<b>1,746,787</b>

## STATEMENT OF CASH FLOWS

For the year ended 31 December 2019

	2019 \$	2018 \$
<b>Statement of Cash Flows</b>		
<b>Operating activities</b>		
Receipts from Customers	2,275,431	2,072,596
Payments to suppliers	(1,498,842)	(1,164,731)
Payments to employees	(652,186)	(728,097)
GST	15,729	272
Interest and dividends received	40,970	40,599
Resident Withholding Tax	(894)	(5,990)
Net cash from/(used in) operating activities	180,208	214,649
<b>Investing activities</b>		
Purchase of investments	525,433	(139,184)
Sale of investments	–	–
Purchase of property, plant and equipment	(51,624)	(49,210)
Net cash from/(used in) investing activities	473,809	(188,394)
<b>Total Movement in Cash Flows</b>	<b>654,017</b>	<b>26,255</b>
<b>Cash and cash equivalents</b>		
Cash and cash equivalents at beginning of the year	327,308	301,053
Net increase/(decrease) in cash and cash equivalents	654,017	26,255
<b>Cash and cash equivalents at end of the year</b>	<b>981,325</b>	<b>327,308</b>



Board Chair  
12 March 2020



Treasurer  
12 March 2020



# NOTES TO THE FINANCIAL STATEMENTS

for the year ended 31 December 2019

## Reporting Entity

The New Zealand Planning Institute is an Incorporated Society in New Zealand, incorporated under the Incorporated Societies Act 1908 and is a public benefit entity for the purposes of financial reporting in accordance with the Public Benefit Entity Standards Reduced Disclosure Regime (PBE Standards RDR).

## Basis of Preparation

### a) Statement of compliance

The financial statements have been prepared in accordance with generally accepted accounting practice in New Zealand ('NZGAAP'). The financial statements comply with the PBE Standards RDR as appropriate for Tier 2 not-for-profit public benefit entities. The Association qualifies as a Tier 2 reporting entity as it does not have public accountability and it is not defined as large. All reduced disclosure regime exemptions have been adopted. These financial statements were authorised for issue by the Executive Committee on the date indicated on page 25.

### b) Measurement basis

The financial statements have been prepared on a historical cost basis. The financial report is presented in New Zealand dollars.

## SIGNIFICANT JUDGEMENTS AND ESTIMATES

The preparation of the Association's financial statements requires management to make judgements, estimates and assumptions that affect the reported amounts of revenues, expenses, assets and liabilities, and the accompanying disclosures. Uncertainty about these assumptions and estimates could result in outcomes that require a material adjustment to the carrying amount of assets or liabilities affected in future periods.

### a) Judgements

In the process of applying the Association's accounting policies, management has made the following judgements, which have the most significant effect on the amounts recognised in the financial statements:

#### i. Classification of non-financial assets as cash generating assets or non-cash-generating assets.

For the purpose of assessing impairment indicators and impairment testing, the Association classifies non-financial assets as non-cash-generating assets as the primary objective of the assets are not to generate commercial return.

#### ii. Classification of lease arrangements

Whether a lease is a finance lease or an operating lease depends on the substance of the transaction rather than the form of the contract and the classification of lease arrangements are performed on a lease-by-lease basis.

### b) Assumptions and estimation uncertainty

The key assumptions concerning the future and other key sources of estimation uncertainty at the reporting date, that have a significant risk of causing a material adjustment to the carrying amounts of assets and liabilities within the next financial year, are described below. The Association based its assumptions and estimates on parameters available when the financial statements were prepared. Existing circumstances and assumptions about future developments, however, may change due to market changes or circumstances arising beyond the control of the Association. Such changes are reflected in the assumptions when they occur.

#### i. Useful lives and residual values

The useful lives and residual values of assets are assessed using the following indicators to inform potential future use and value from disposal:

- The condition of the asset based on the assessment of experts employed by the Association
- The nature of the asset, its susceptibility and adaptability to changes in technology and processes
- The nature of the processes in which the asset is deployed
- Availability of funding to replace the asset
- Changes in the market in relation to the asset

## SIGNIFICANT ACCOUNTING POLICIES

The accounting policies set out below have been applied consistently to all periods presented in these financial statements and have been applied consistently by the Association.

### Revenue Recognition

Revenue is recognised to the extent that it is probable that the economic benefits or service potential will flow to the Association and the revenue can be reliably measured, regardless of when the payment is being made. Revenue is measured at the fair value of the consideration received or receivable, taking into account contractually defined terms of payment and excluding taxes or duty. The specific recognition criteria described below must also be met before revenue is recognised:

#### i. Revenue from exchange transactions

##### Subscriptions

Revenue is recognised over the period of the membership or subscription (usually 12 months). Amounts received in advance for memberships or subscriptions relating to future periods are recognised as a liability until such time that period covering the membership or subscription occurs.

##### Ticketing and entry fees

Revenue from ticketing and entry fees is recognised in surplus or deficit in the period in which the event has taken place. Revenue received prior to the event is deferred and recognised as revenue in advance.

Amounts received in advance for services to be provided in future periods are recognised as a liability until such time as the service is provided.

##### Sponsorships

The Association receives sponsorships and in return provides material benefits to the sponsor. The sponsorship funding is recognised as the benefits are provided to the funder. Amounts received in advance are recognised as a liability until such time as the service is provided.

##### Interest income

Interest income is recorded using the effective interest rate. Effective interest rate is the rate that exactly discounts the estimated future cash payments or receipts over the expected life of the financial instrument or a shorter period, where appropriate, to the net carrying amount of the financial asset or liability.

Interest income is included in finance income in the statement of comprehensive revenue and expense.

##### Event Expenses

Expenses related to events which take place after balance date are deferred and recognised in the next financial year, when the event occurs.

##### Employee Benefits

Liabilities for wages and salaries (including non-monetary benefits), annual leave and bonus payments are recognised in surplus or deficit during the period in which the employee rendered the related services, and are generally expected to be settled within 12 months of the reporting date. The liabilities for these short-term benefits are measured at the amounts expected to be paid when the liabilities are settled.

##### Income Tax

###### i. Current income tax

Current income tax assets and liabilities for the current period are measured at the amount expected to be recovered from or paid to the taxation authorities. The tax rates and tax laws used to compute the amount are those that are enacted or substantively enacted, at the reporting date in New Zealand.

Current income tax relating to items recognised directly in equity is recognised in equity and not in the statement of profit or loss.

Tax calculations are completed on the basis that all activities related to the membership revenue and related expenses are exempt from income tax. Investment income is considered taxable for tax purposes.

###### ii. Deferred income tax

Deferred income tax assets and liabilities are measured at the tax rates that are expected to apply to the year when the asset is realised or the liability is settled, based on tax rates (and tax laws) that have been enacted or substantively enacted at the reporting date. There is no deferred tax as the amount taxable for the year is taxed in the year.

###### iii. Goods and services tax

Revenues, expenses and assets are recognised net of the amount of GST except:

- When the GST incurred on a purchase of assets or services is not recoverable from the taxation authority, in which case the GST is recognised as part of the cost of acquisition of the asset or as part of the expense item, as applicable; and

- In the case of receivables and payables, which are stated with the amount of GST included.

The net amount of GST recoverable from, or payable to, the taxation authority is included as part of receivables or payables in the statement of financial position.

##### Financial Instruments

The Association's financial assets include: cash and short term deposits, and trade and other receivables. The Association's financial liabilities include trade and other payables.

###### i. Initial recognition

All financial assets are recognised initially at fair value plus transaction costs that are attributable to the acquisition of the financial asset. All financial liabilities are recognised initially at fair value.

###### ii. Subsequent measurement Loans and receivables

This category generally applies to trade and other receivables and cash and cash equivalents. Loans and receivables are financial assets with fixed or determinable payments that are not quoted in an active market. This category of financial assets is the most relevant to the Association.

After initial measurement, such financial assets are subsequently measured at amortised cost using the effective interest rate method, less impairment. Amortised cost is calculated by taking into account any discount or premium on acquisition and fees or costs that are an integral part of the effective interest rate. Cash and cash equivalents represent highly liquid investments that are readily convertible into a known amount of cash with an insignificant risk of changes in value, with maturities of 3 months or less.

###### Financial liabilities at amortised cost:

After initial recognition, trade and other payables and interest-bearing loans and borrowings are subsequently measured at amortised cost using the effective interest rate method. Gains and losses are recognised in surplus or deficit when the liabilities are

derecognised as well as through the effective interest rate amortisation process. The effective interest rate amortisation is included as finance costs in the statement of comprehensive revenue and expense.

Trade and other payables are unsecured and are usually paid within 30 days of recognition. Due to their short-term nature they are not discounted.

Amortised cost is calculated by taking into account any discount or premium on acquisition and fees or costs that are an integral part of the effective interest rate.

##### Impairment of financial assets

The Association assesses, at each reporting date, whether there is objective evidence that a financial asset or a group of financial assets is impaired. An impairment exists if one or more events that has occurred since the initial recognition of the asset (an incurred 'loss event') has an impact on the estimated future cash flows of the financial asset or the group of financial assets that can be reliably estimated.

###### i. Financial assets classified as loans and receivables

The Association considers evidence of impairment for financial assets measured at amortised cost (loans and receivables and held-to-maturity) at both a specific asset and collective level.

An impairment loss in respect of a financial asset measured at amortised cost is calculated as the difference between its carrying amount and the present value of the estimated future cash flows discounted at the asset's original effective interest rate. Losses are recognised in surplus or deficit and reflected in an allowance account against loans and receivables.

##### Property, plant and equipment

###### i. Initial recognition and subsequent expenditure

Property, plant and equipment is measured initially at cost. Cost includes expenditure that is directly attributable to the acquisition of the items. The cost of an item of property plant and equipment is recognised only when it is probable that future economic benefit or service potential associated with the item will flow to the Association and if the item's cost or fair value can be measured reliably.

Subsequent costs that meet the recognition criteria above are recognised in the carrying value of the item of property, plant and equipment. Such cost includes the cost of replacing part of the property, plant and equipment if the recognition criteria are met. When significant parts of property, plant and equipment are required to be replaced at intervals, the Association recognises such parts as individual assets with specific useful lives and depreciates them accordingly.

###### ii. Subsequent measurement

Subsequent to initial recognition, plant and equipment are measured at cost, net of accumulated depreciation and impairment losses, if any.

###### iii. Depreciation

Depreciation is charged on a diminishing value basis over the useful life of the asset. Depreciation is charged at rates calculated to allocate the cost or valuation of the asset less any estimated residual value over its remaining useful life:

Leasehold Improvements 10% - 20% Diminishing Value.  
Motor Vehicles 30% Diminishing Value.  
Office Equipment 9% - 67% Diminishing Value.\*  
Website Costs 48% Diminishing Value.

\* Except for the leased Sharp photocopier. This asset has been depreciated on a straight-line basis over the term of the lease of the asset.

The assets' residual values, useful lives and amortisation methods are reviewed, and adjusted if appropriate, at each financial year end. An asset's carrying amount is written down immediately to its recoverable amount, or recoverable service amount, if the asset's carrying amount is greater than its estimated recoverable amount or recoverable service amount. Please refer to policy (i) on impairment of non-financial assets below.

###### iv. Derecognition

An item of property, plant and equipment is derecognised upon disposal or when no further future economic benefits or service potential are expected from its use or disposal. Gains and losses on disposals are determined by comparing proceeds with the carrying amount. These are included in surplus or deficit.

##### Leases

###### i. Finance leases

Upon initial recognition the leased asset is measured at an amount equal to the lower of its fair value and the present value of the minimum lease payments. Subsequent to initial recognition, the asset is accounted for in accordance with the accounting policy applicable to that asset.

###### ii. Operating leases

Leases that are not finance leases are classified as operating leases. Operating leases are not recognised in the Association's Balance Sheet. Payments made under operating leases are recognised in surplus or deficit on a straight-line basis over the term of the lease. Lease incentives received are recognised as an integral part of the total lease expense, over the term of the lease.

##### Equity and reserves

###### i. Accumulated comprehensive revenue and expense

Accumulated comprehensive revenue and expense is the Association's accumulated surplus or deficit since the formation of the Association, adjusted for transfers to/from specific reserves.



NOTES TO THE FINANCIAL STATEMENTS

for the year ended 31 December 2019

	2019 \$	2018 \$
<b>1. Analysis of Revenue</b>		
<b>Revenue from exchange transactions</b>		
Branch Income	24,801	24,544
CPD Revenue	544,966	484,810
Membership Subscriptions	687,022	659,374
National Conference	743,020	605,517
Situations Vacant Revenue	195,469	161,076
Other Revenue	67,338	71,820
<b>Total Revenue from exchange transactions</b>	<b>2,262,616</b>	<b>2,007,140</b>
<b>2. Analysis of Expenses</b>		
<b>Volunteer and employee related costs</b>		
ACC	1,435	1,420
KiwiSaver	16,787	14,960
Payroll Fees	530	438
Salaries	623,093	585,170
Travel	22,187	36,949
<b>Total Volunteer and employee related costs</b>	<b>664,031</b>	<b>638,937</b>
<b>Depreciation &amp; Amortisation</b>		
Depreciation	22,436	23,386
<b>Total Depreciation &amp; Amortisation</b>	<b>22,436</b>	<b>23,386</b>
<b>Other Expenses</b>		
Branch Expenditure	39,345	33,372
CPD Expenses	336,716	333,741
National Conference	554,981	427,309
Other Expenses	502,368	409,389
<b>Total Other Expenses</b>	<b>1,433,411</b>	<b>1,203,810</b>
<b>3. Analysis of Assets</b>		
Cash and cash equivalents		
Cash at Bank	981,326	327,308
<b>Total Cash and cash equivalents</b>	<b>981,326</b>	<b>327,308</b>
Long Term Investments		
Term Deposits	20,733	28,900
<b>Total Long Term Investments</b>	<b>20,733</b>	<b>28,900</b>
<b>Prepayments</b>		
Prepaid Expenses	152,737	70,263
<b>Total Prepayments</b>	<b>152,737</b>	<b>70,263</b>

	2019 \$	2018 \$
<b>Receivables from exchange transactions</b>		
Accounts Receivable	174,685	123,217
Interest Accrual	3,387	7,868
GST	(8,214)	7,520
Income Tax	(63)	6,797
Resident Withholding Tax	15,204	7,450
Sundry Debtors	–	–
<b>Total Receivables from exchange transactions</b>	<b>184,999</b>	<b>152,852</b>
<b>Short Term Investments</b>		
Term Deposits	654,284	1,171,550
<b>Total Short Term Investments</b>	<b>654,284</b>	<b>1,171,550</b>
<b>Work in Progress - Website</b>		
Work In Progress	43,750	–
Total Work in Progress - Website	43,750	–
<b>4. Analysis of Liabilities</b>		
<b>Payables from exchange transactions</b>		
Accrued Expenses	14,400	14,400
Accounts Payable	16,789	19,163
Credit Cards	3,912	–
ECC Creditor	54,140	48,608
Income in Advance	151,590	124,038
Lease Liabilities	9,586	–
Sundry Creditors & Accruals	25,654	1,704
<b>Total Payables from exchange transactions</b>	<b>276,071</b>	<b>207,913</b>
<b>Employee Benefits</b>		
Annual Leave Provision	45,845	37,286
Payroll Accrual	16,308	13,022
<b>Total Employee Benefits</b>	<b>62,152</b>	<b>50,308</b>

5. Property, Plant & Equipment

Cost	Leasehold Improvements	Motor Vehicles	Office Equipment	Website Costs	Total
<b>Balance as at 31 December 2018</b>	<b>\$48,176</b>	<b>\$46,667</b>	<b>\$55,297</b>	<b>\$39,000</b>	<b>\$189,140</b>
Additions	\$2,383		\$57,085	38,647	\$59,468
Disposals	(\$23,962)		(\$3,727)	20,280	(\$27,689)
<b>Balance as at 31 December 2019</b>	<b>\$26,597</b>	<b>\$46,667</b>	<b>\$108,655</b>	<b>\$39,000</b>	<b>\$220,919</b>
<i>Accumulated Depreciation and Impairment</i>					
<b>Balance as at 31 December 2018</b>	<b>\$20,280</b>	<b>\$13,402</b>	<b>\$42,488</b>	<b>\$38,647</b>	<b>\$114,817</b>
Depreciation	\$125	\$9,979	\$12,162	\$169	\$22,435
<b>Balance as at 31 December 2019</b>	<b>\$20,405</b>	<b>\$23,381</b>	<b>\$54,650</b>	<b>\$38,816</b>	<b>\$137,252</b>
<i>Net Book Value</i>					
<b>Balance as at 31 December 2018</b>	<b>\$27,897</b>	<b>\$33,264</b>	<b>\$12,809</b>	<b>\$353</b>	<b>\$74,322</b>
<b>Balance as at 31 December 2019</b>	<b>\$6,193</b>	<b>\$23,286</b>	<b>\$54,005</b>	<b>\$184</b>	<b>\$83,667</b>

# NOTES TO THE FINANCIAL STATEMENTS

for the year ended 31 December 2019

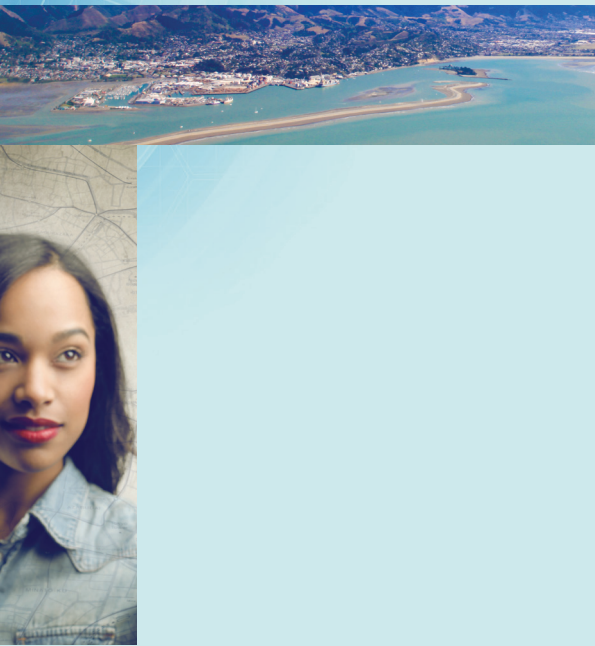
	2019 \$	2018 \$
<b>6. Obligations under Leases</b>		
<b>Building and Carpark - Operating Lease</b>		
Payable within a year	52,469	30,648
Payable within one and five years	209,879	–
Later than five years	52,469	–
<b>Total Building and Carpark - Operating Lease</b>	<b>319,189</b>	<b>30,648</b>
<b>Equipment - Finance Lease</b>		
Payable within a year	9,586	13,087
Payable within one and five years	36,486	27,264
<b>Total Equipment - Finance Lease</b>	<b>46,072</b>	<b>40,351</b>
<b>Total Obligations under Leases</b>	<b>365,261</b>	<b>70,999</b>
<b>7. Financial Instruments</b>		
i. classification and fair values of financial instruments The table below shows the carrying amount of the Association's financial assets and financial liabilities:		
ii. Fair Values The carrying values approximate their fair values.		
<b>Carrying amount</b>		
Cash and cash equivalent	981,326	327,308
Short term investment	654,284	1,171,550
Long term investment	20,733	28,900
Short term finance lease	(9,586)	–
Long term finance lease	(36,486)	–
Receivables from exchange transactions	174,685	123,217
Payables	(70,929)	(67,771)
<b>Total Carrying amount</b>	<b>1,714,027</b>	<b>1,583,204</b>
<b>8. Contingent Liabilities and Events after reporting date</b>		
At balance date contingent liabilities have been estimated at nil (2018: nil). There are no subsequent events after reporting period (2018: nil).		
<b>9. Related Party Disclosure</b>		
In the financial year, the Association paid \$23,729 to Planz Consultants Limited, a company of which Jonathan Cleese is a minor shareholder, for CPD training and course speaking.		
<b>Compensation of key management personnel</b> Key management personnel of the Association include the Board of Directors, and the Executive Management Team (which includes the Chief Executive). No remuneration is paid to the directors. The total remuneration of key management personnel and number of individuals, on a full-time equivalent basis, receiving remuneration from the Association are: The number of key management personnel (FTE's): Key management personnel remuneration	1.1 \$150,000	1.1 \$142,500

Key management personnel did not receive any remuneration or compensation other than in their capacity as key management personnel. The Association did not provide any compensation at non-arm's length terms to close family members of key management personnel during the year. The Association did not provide any loans to key management personnel or their close family members.

## 10. Branches

The financial statements include the income, expenditure, bank funds and deposits of the New Zealand Planning Institute Incorporated branches.

# MEMBERSHIP DIRECTORY





Life Fellow

Robert Batty  
Malcolm Douglass

Fellow

Sylvia Allan  
Leigh Auton  
Sarah Dawson  
Jenny Dixon  
Jane Douglas  
David Forrest  
Michael Foster  
Paula Hunter  
Bryce Julian  
Caroline Miller  
Robert Schofield  
Alan Watson

Fellow  
(Partially Active)

John Childs  
Ivan Thomson

Honorary

Keith Berman  
Bernard Forde  
Ronald Harvey  
Miriam Paxie  
David Sheppard  
Peter Skelton  
Arnold Turner

Full

Alistair Aburn  
Hanna Afifi  
Elizabeth Aitken Rose  
Linda Albertyn  
Ernest Albuquerque  
Leah Alexander  
Wayne Allan  
Matt Allott  
Louise Allwood  
Charlotte Almond  
Alan Anderson  
Denise Anderson  
Donald Anderson  
Hamish Anderson  
Helen Anderson  
Ree Anderson  
Thomas Anderson  
Penelope Anson  
Paul Annesen  
Mark Ashby  
Justine Ashley  
Fiona Aston  
Orchid Atimalala  
David Badham  
Russell Baikie  
Marc Bailly  
Bruce Baker  
Mary-Anne Baker  
Nathan Baker  
Wendy Baker  
Bill Barclay  
Peter Barnes  
Craig Barr  
Philip Barrett  
Jacquiline Bartley  
Aimee Barwick  
Andrew Bashford  
Craig Batchelar  
Judith Batchelor  
Mark Batchelor  
Karen Baverstock  
Wendy Baverstock  
Terry Baxter  
Ian Bayliss  
Emma Bayly  
Simon Beale  
Rebecca Beals  
Lee Beattie  
Laurence Beckett  
Diana Bell

Jacqueline Bell  
Janine Bell  
Karen A Bell  
Karen S Bell  
Mark Bellingham  
Mark Benjamin  
Tracy Berghan  
James Bevan  
Julie Bevan  
Sarah Bevin  
David Bewley  
Tanvir Bhamji  
Stephen Bigwood  
Gulab Bilimoria  
Mandy Bishop  
Jane Black  
Neil Black  
Richard Black  
Tim Blackman  
Scott Blair  
Jeremy Blake  
Richard Blakey  
Tom Bland  
Kevin Bligh  
Fiona Blight  
Daan Blokker  
Ian Blundell  
Carolyn Bonis  
Matt Bonis  
Julie Boucher  
Paul Bowman  
Felicity Boyd  
Terence Boylan  
Andrea Brabant  
Stuart Bracey  
Murray Brass  
Beverley Bray  
Justine Bray  
Nicole Bremner  
Robin Britton  
Chanelle Brodie  
Jeremy Brophy  
Helen Brosnan  
Jeffrey Brown  
Jonathan Brown  
Marilyn Brown  
Philip Brown  
Sarah Brownie  
Katrina Brunton  
Nigel Bryce  
Philip Buckleton  
Patrick Buckley  
Antony Bullard  
Robert Burgoyne  
Theresa Burkhardt  
Angelene Burn  
Owen Burn  
Trudi Burney  
Aaron Burt  
William (Dave) Burton  
Dennis Bush-King  
Pam Butler  
Craig Cairncross  
Romae Calland  
Murray Cameron  
David Campbell  
Russell Campbell  
Michael Campbell  
Olivia Campbell  
Jaimee Cannon  
Lisa Capes  
Ashlie Carlyle  
Anna Carter  
Janice Carter  
John Carter  
Jennifer Carrvill  
Christine Caughey  
Andrew Cave  
Crystal Chan  
Vishal Chandra  
Raymond (Kah Mun) Chang  
Edward Chapman-Cohen  
Rhys Chesterman  
Robert Chieng  
Ching (Melody) Chow  
Terry Baxter  
Ian Bayliss  
Emma Bayly  
Simon Beale  
Rebecca Beals  
Lee Beattie  
Laurence Beckett  
Diana Bell

Jonathan Clease  
Mark Clews  
Gillian Cockerell  
Aaron Collier  
Andrew Collins  
Catherine Collinson  
Stephen Colson  
Colin Comber  
Philip Comer  
David Compton-Moen  
Elva Conroy  
Peter Constantine  
Stephen Bigwood  
Gulab Bilimoria  
Mandy Bishop  
Jane Black  
Neil Black  
Richard Black  
Tim Blackman  
Scott Blair  
Jeremy Blake  
Richard Blakey  
Tom Bland  
Kevin Bligh  
Fiona Blight  
Daan Blokker  
Ian Blundell  
Carolyn Bonis  
Matt Bonis  
Julie Boucher  
Paul Bowman  
Felicity Boyd  
Terence Boylan  
Andrea Brabant  
Stuart Bracey  
Murray Brass  
Beverley Bray  
Justine Bray  
Nicole Bremner  
Robin Britton  
Chanelle Brodie  
Jeremy Brophy  
Helen Brosnan  
Jeffrey Brown  
Jonathan Brown  
Marilyn Brown  
Philip Brown  
Sarah Brownie  
Katrina Brunton  
Nigel Bryce  
Philip Buckleton  
Patrick Buckley  
Antony Bullard  
Robert Burgoyne  
Theresa Burkhardt  
Angelene Burn  
Owen Burn  
Trudi Burney  
Aaron Burt  
William (Dave) Burton  
Dennis Bush-King  
Pam Butler  
Craig Cairncross  
Romae Calland  
Murray Cameron  
David Campbell  
Russell Campbell  
Michael Campbell  
Olivia Campbell  
Jaimee Cannon  
Lisa Capes  
Ashlie Carlyle  
Anna Carter  
Janice Carter  
John Carter  
Jennifer Carrvill  
Christine Caughey  
Andrew Cave  
Crystal Chan  
Vishal Chandra  
Raymond (Kah Mun) Chang  
Edward Chapman-Cohen  
Rhys Chesterman  
Robert Chieng  
Ching (Melody) Chow  
Terry Baxter  
Ian Bayliss  
Emma Bayly  
Simon Beale  
Rebecca Beals  
Lee Beattie  
Laurence Beckett  
Diana Bell

Emma Ensor  
Sven Exeter  
David Falconer  
Janine Fallwell  
Herbert FAMILTON  
Brett Farquhar  
Ben Farrell  
Joy LaNauze  
Matthew Feary  
Louise Feathers  
Andrew Feierabend  
Claire Fell  
Christopher Ferguson  
Shirley Ferguson  
Jonathan Ferguson-Pye  
Emma Fergusson  
Tim Fergusson  
Alex Findlay  
Ailsa Fisher  
Robyn Fisher  
Lynley Fletcher  
Stewart Fletcher  
Samuel Flewollen  
Adam Flynn  
Melanie Foote  
Nicola Foran  
Marilyn Ford  
Julia Forsyth  
Adam Fort  
Samuel Foster  
Felicity Foy  
Alison Francis  
Adam Fraser  
Renee Fraser-Smith  
Jillian Frater  
Claire Freeman  
Chris Freke  
Keith Frenz  
Craig Friedel  
Corinne Frischknecht  
James Fuller  
Jenny Fuller  
Chris Horne  
Tsz Chiu (T.C.) Fung - Stanley Feng  
Megan Gaffaney  
Pamela Gare  
Gary Deeney  
Andrew Deller  
Hester den Ouden  
Megan Dever  
Liz (Elizabeth) Devery  
Blair Devlin  
Chris Dillon  
Rachel Dimery  
Sharon Dines  
Leonard Dissanayake  
Marian Dissanayake  
Rod Dissmeyer  
Glenda Dixon  
Gavin Donald  
Christopher Donnelly  
Neil Donnelly  
Henrik Dorbeck  
Katherine Dorofaëff  
Genevieve Doube  
Richard Douch  
Lee Dove  
Janette Dovey  
Sarah Dreadon  
Kathryn Drew  
Loek Driesen  
Cameron Drury  
Maree Drury  
John Duffy  
Perri Duffy  
Richard Dunbar  
Max Dunn  
Janan Dunning  
John Duthie  
Mark Dyer  
Joanne Easterbrook  
Anna Eatherley  
James Ebenhoh  
Grant Eccles  
John Edmonds  
Aaron Edwars  
Hywel Edwards  
Sarah Edwards  
Trevor Ellis  
Peter Eman  
Geoffrey England  
Reina England

Andrea Harris  
Grant Harris  
Susan Harris  
Timothy Harris  
Wendy Harris  
Jenny Harrison  
Patricia Harte  
Alistar Hartstone  
Stephen Havill  
Bruce Hawkins  
David Hay  
Tracy Hayson  
Timothy Hegarty  
Andrew Henderson  
Ralph Henderson  
Susan Henderson  
James Hendra  
Cath Heppelthwaite  
Lance Hessel  
Jeff Hextall  
James (Hamish) Hey  
Stephen Higgs  
Gregory Hill  
Simon Hill  
Wade Hill  
Jane Hilson  
Craig Hind  
Sherilyn Hinton  
Rupert Hodson  
Brendan Hogan  
Matthew Hoggard  
Matthew Holder  
Ross Holland  
Bryce Holmes  
Mary Honey  
Brett Hood  
James Hook  
David Hookway  
Kathryn Hooper  
Lesley Hopkins  
Abu Hoque  
Chris Horne  
Bevan Houlbrooke  
Keith Hovell  
Emma Howie  
Glen Hughes  
Lynette Hughes  
Phil Hughes  
Sarah Hunt  
John Hutchings  
Alyson Hutton  
Gavin Ide  
Ben Inger  
Aaron Ingoe  
Poul Israelson  
Alice Iuli-Tay  
David Jackson  
Letitcia Jarrett  
Adam Jellie  
Sarah Jenkin  
Lesley Jenkins  
Richard Jenkins  
Anna Jennings  
Alex Jepsen  
Alastair Jewell  
Juliet Johnson  
Peter Johnson  
Richard Johnson  
Pam Johnston  
Rachelle Johnston  
Timothy Joll  
Angela Jones  
Paul Jones  
Ella Jonker  
Bruce Junor  
Megan Justice  
Barry Kaye  
Evan Keating  
Claire Kelly  
Terrena Kelly  
Jane Kemble  
Rod Halliday  
Bruce Halligan  
Manini Hallikeri  
Elizabeth Halsted  
Brent Hamilton  
Andrew Hammond  
Christopher Hansen  
Reuben Hansen  
Colin Hardacre  
Amanda Harland  
Jim (Philip) Hartland

Peter Kloosterman  
Gregory Knell  
Kaylee Kolkman  
Veena Krishna  
Karyn Krzeja  
Vijay Lala  
David Lamason  
Joy LaNauze  
Nathaniel Landingin  
Craig McGarr  
Bryan McGillan  
Paul McGimpsey  
Melissa McGrath  
Patrick McHardy  
Sherie McHardy  
Philip McKay  
Claire McKeever  
Melanie McKelvie  
Angus McKenzie  
Bayard McKenzie  
Steven McKenzie  
Helen McLean  
Ainsley McLeod  
Iain McManus  
Bill McMaster  
Christine McMillan  
Julie McMinn  
Cathy McNab  
Fraser McNutt  
Andrew McPhee  
Luke McSorley  
Andrew Mead  
David Mead  
Lisa Mein  
Jaye Michalick  
Franica Mikulicic  
Emma Miller  
Malcolm Miller  
Phil Mitchell  
Ross Mofatt  
Elizabeth Moncrieff  
Helen Montgomery  
Gareth Moran  
Stella Morgan  
Alice Morris  
Glenn Mortimer  
Russell Mortimer  
Barry Mosley  
Alan Moss  
David Moule  
David Mountfort  
Neil Mumby  
Richard Munneke  
Ian Munro  
David Murphy  
Daniel Murray  
Werner Murray  
Simon Muttonori  
Kim Nathan  
David Needham  
Peter Neeve  
Samuel Nevin  
Alison Newbald  
Daniel Newcombe  
Lynley Newport  
Ann Nicholas  
Michael Nielsen  
Robert Nixon  
Lawrence Njoku  
Brad Nobilo  
Matthew Norwell  
Lauren O'Byrne  
Mary O'Callahan  
Burnette O'Connor  
Luke O'Dwyer  
Russell O'Leary  
John Oliver  
Helen Oram  
Suzanne O'Rourke  
Brett Osborne  
Greg Osborne  
Richard Osborne  
Zoe Scull  
Kate Searle  
Kim Seaton  
Nicola Sedgley  
Kelly Seekup  
Emily Serjeant  
Julie-Anne Shanks  
Daniel Shao  
Craig Sharman  
Megan Patrick

Andrew McCarthy  
Robert McClean  
Rachel McClung  
David McCorkindale  
Christian McDean  
Philip McDermott  
Roger McDonald  
Murray McDonald  
Damien McGahan  
Craig McGarr  
Bryan McGillan  
Paul McGimpsey  
Melissa McGrath  
Patrick McHardy  
Sherie McHardy  
Philip McKay  
Claire McKeever  
Melanie McKelvie  
Angus McKenzie  
Bayard McKenzie  
Steven McKenzie  
Helen McLean  
Ainsley McLeod  
Iain McManus  
Bill McMaster  
Christine McMillan  
Julie McMinn  
Cathy McNab  
Fraser McNutt  
Andrew McPhee  
Luke McSorley  
Andrew Mead  
David Mead  
Lisa Mein  
Jaye Michalick  
Franica Mikulicic  
Emma Miller  
Malcolm Miller  
Phil Mitchell  
Ross Mofatt  
Elizabeth Moncrieff  
Helen Montgomery  
Gareth Moran  
Stella Morgan  
Alice Morris  
Glenn Mortimer  
Russell Mortimer  
Barry Mosley  
Alan Moss  
David Moule  
David Mountfort  
Neil Mumby  
Richard Munneke  
Ian Munro  
David Murphy  
Daniel Murray  
Werner Murray  
Simon Muttonori  
Kim Nathan  
David Needham  
Peter Neeve  
Samuel Nevin  
Alison Newbald  
Daniel Newcombe  
Lynley Newport  
Ann Nicholas  
Michael Nielsen  
Robert Nixon  
Lawrence Njoku  
Brad Nobilo  
Matthew Norwell  
Lauren O'Byrne  
Mary O'Callahan  
Burnette O'Connor  
Luke O'Dwyer  
Russell O'Leary  
John Oliver  
Helen Oram  
Suzanne O'Rourke  
Brett Osborne  
Greg Osborne  
Richard Osborne  
Zoe Scull  
Kate Searle  
Kim Seaton  
Nicola Sedgley  
Kelly Seekup  
Emily Serjeant  
Julie-Anne Shanks  
Daniel Shao  
Craig Sharman  
Megan Patrick

Murray Patterson  
Dave Paul  
Carey Pearce  
Marguerite Pearson  
Madaina Perera  
Rebecca Perrett  
Heather Perring  
Michele Perwick  
Belinda Petersen  
Reuben Peterson  
Richard Peterson  
Peter Phillips  
Rory Phillips  
Sarah Picard  
Leif Pigott  
Aruna Pillay  
Nesh Pillay  
Paul Sousa  
Clare Piper  
Penelope Pirrit  
Nicholas Pollard  
Greg Pollock  
Bryce Pomfrett  
Namouta Poutasi  
Reginald Proffitt  
Rachael Pull  
Andrew Purves  
Brian Putt  
Tony Quickfall  
Gary Rae  
Deepak Rama  
Rajiv Raman  
Vanita Ranchhod  
Marijke Ransom  
Neil Rasmussen  
Peter Rawson  
Catherine Reaburn  
Peter Reaburn  
Marilyn Regnault  
Phillip Reid  
Christopher Rendall  
Hamish Rennie  
Jane Rennie  
Ben Rhodes  
Catherine Richards  
Shannon Richardson  
Tania Richmond  
Andrea Rickard  
Richard Ritsma  
Graeme Roberts  
Mark Roberts  
Nick Roberts  
Shane Roberts  
Christina Robertson  
Michael Robinson  
Daniel Rodie  
Deanne Rogers  
Paula Rolfe  
Katrina Roos  
Joanna Ross  
Mark Ross  
Katherine (Katie) Round  
Deborah Rowe  
Miles Rowe  
Marcus Roy  
Marje Russ  
Grant Russell  
Paul Ryan  
Nicola Rykers  
Douglas Sadlier  
Karyn Sands  
Donald Sangster  
Christiane Sargent  
Darrell Sargent  
Chloe Trenouth  
James (Jim) Saunders  
Wendy Saunders  
Norbert Schaffoener  
Michele Schitko  
Josie Schroder  
Robert Scott  
Christopher Scrafton  
Sid Scull  
Kate Searle  
Kim Seaton  
Nicola Sedgley  
Kelly Seekup  
Emily Serjeant  
Julie-Anne Shanks  
Daniel Shao  
Craig Sharman  
Megan Patrick

Neil Sheerin  
Laurence Sherriff  
Eryn Shields  
Heather Sinclair  
Karyn Sinclair  
Timothy Sinclair  
Gurv Singh  
Sukhdeep Singh  
Ian Smallburn  
Siani Walker  
Cassandra Smith  
Chris Smith  
Melinda Smith  
Vaughan Smith  
Wayne Smith  
Maximus Smitheram  
Jarrod Snowsill  
Jason Ward  
William Wasley  
William Watt  
Jo Watts  
Lynda Westsell-Murchison  
Peter Webb  
Elizabeth Wells  
Hamish Wesney  
Sara Westcott  
Andrew Wharton  
Alistair White  
Elizabeth White  
Bill Stevens  
Mark Stevenson  
Sarah Stevenson  
Angela Stewart  
Carol Stewart  
Elizabeth Stewart  
Rosanne Stewart  
Philip Stickney  
Alison Stilwell  
Rachael Stocker  
Stephanie Styles  
Caleb Sutton  
Rebecca Sutton  
Jamie Swan  
Manea Sweeney  
Gina Sweetman  
Piotr Swierczynski  
Darryl Sycamore  
Rachael Symons  
Alistair Talbot  
Jeremy Talbot  
Josephine Tam  
Mark Tamura  
Kahurangi Tapsell  
Carmen Taylor  
Graham Taylor  
James Taylor  
Louise Taylor  
Glenn Teal  
Kirsten Tebbutt  
Ella Tennent  
Michael Theelen  
Mark Thode  
Paul Thomas  
Gerard Thompson  
Mark Thompson  
Michelle Thompson-Faw-cett  
Emily Thomson  
Karleen Thomson  
Jason Tickner  
Jacqueline Todd  
David Totman  
Urtwyn Trebilco  
Ken Tremaine  
Chloe Trenouth  
Andrew Trevelyan  
Amber (Sze Wan) Tsang  
Cozy Tsui  
Christopher Turbott  
Richard Turner  
Cameron Twigley  
Matthew Twose  
Jessica Urquhart  
Jennifer Valentine  
Suzanne Vallance  
Caroline van Halderen  
Hans Van Kregten  
Kirsty Van Reenen  
Alexander van Son  
Peter Vari  
Garry Venus  
Tim Vial

Mark Vinall  
Jennifer Vince  
Mike Vincent  
Carey Vivian  
Melaina Voss  
Greg Vossler  
Leslie Vyfhuis  
Paul Waanders  
Alistair (Alex) Wakefield  
Siani Walker  
Cameron Wallace  
David Wallace  
Pip Wallace  
Christopher Walsh  
Theresa Walsh  
Brian Warburton  
Cynthia Ward  
Jason Ward  
William Wasley  
William Watt  
Jo Watts  
Lynda Westsell-Murchison  
Peter Webb  
Elizabeth Wells  
Hamish Wesney  
Sara Westcott  
Andrew Wharton  
Alistair White  
Elizabeth White  
Bill Stevens  
Mark Stevenson  
Sarah Stevenson  
Angela Stewart  
Carol Stewart  
Elizabeth Stewart  
Rosanne Stewart  
Philip Stickney  
Alison Stilwell  
Rachael Stocker  
Stephanie Styles  
Caleb Sutton  
Rebecca Sutton  
Jamie Swan  
Manea Sweeney  
Gina Sweetman  
Piotr Swierczynski  
Darryl Sycamore  
Rachael Symons  
Alistair Talbot  
Jeremy Talbot  
Josephine Tam  
Mark Tamura  
Kahurangi Tapsell  
Carmen Taylor  
Graham Taylor  
James Taylor  
Louise Taylor  
Glenn Teal  
Kirsten Tebbutt  
Ella Tennent  
Michael Theelen  
Mark Thode  
Paul Thomas  
Gerard Thompson  
Mark Thompson  
Michelle Thompson-Faw-cett  
Emily Thomson  
Karleen Thomson  
Jason Tickner  
Jacqueline Todd  
David Totman  
Urtwyn Trebilco  
Ken Tremaine  
Chloe Trenouth  
Andrew Trevelyan  
Amber (Sze Wan) Tsang  
Cozy Tsui  
Christopher Turbott  
Richard Turner  
Cameron Twigley  
Matthew Twose  
Jessica Urquhart  
Jennifer Valentine  
Suzanne Vallance  
Caroline van Halderen  
Hans Van Kregten  
Kirsty Van Reenen  
Alexander van Son  
Peter Vari  
Garry Venus  
Tim Vial

Rosalind Day-Cleavin  
Rosalind Devlin  
Catriona Eagles  
Sarah FitzGerald  
Anna Gardiner  
Richard Gard'ner  
Kirsty Graveling  
Sarah Hart  
Shane Hartley  
Rachel Helme  
Vicki Jones  
Sarah Jones  
Michelle Kemp  
Anna Maria King  
Tracey Lamason  
Kym Lewis  
Annejo Liang  
Kylie McLaughlin-Brown  
Georgina McPherson  
Nina Murphy  
Kylie O'Dwyer  
Rebecca Payne  
Jane Price  
Andrew Riddell  
Rachel Ritchie  
Kate Sanders  
Ian Shapcott  
Hamish Sinclair  
Dhirendra Singh  
Cate Southworth  
Suzanne Speer  
Laura Swan  
Ken Swinney  
Susannah Tait  
Allison Tindale  
Louise Wai  
Rochelle Waugh  
Jane West  
Grey Wilson

Intermediate

Ben Addington  
Lee Ah Ken  
Toakase Akoteu  
Amin Alani  
Rodney Albertyn  
Emily Allan  
Brad Allen  
Marzan Amara  
Simon Andrew  
Robert Andrews  
Carine Andries  
Venessa Anich  
Jade Ansted  
Bernadette Aperahama  
Cameron Aplin  
Ethan Archer  
Jonathan Arlidge  
Murray Arnold  
Lauren Baddock  
Ben Baird  
Lynette Baish  
Luke Balchin  
Sanjay Bangs  
Simon Banks  
Kathryn Barnes  
Megan Barr  
Kathryn Barrett  
Sebastian Barrett  
Deanne Barretto  
Jared Bartlett  
Clare Barton  
Mary Barton  
Julia Bates  
Jane Bayley  
Matthew Bayly  
Natalie Bedggood  
Briar Belgrave  
Victoria Bell  
Brad Bellamy  
Simon Bendall  
Myaan Bengosi  
Courtney Bennett  
Cristalene Bennett  
Sam Benson  
Amy Beran  
Aslam Bhikoo  
Scott Bicknell  
Kirsten Binnie  
David Bishop

Mark Bishop  
Selwyn Blackmore  
Hermione Blair  
Anthony Blomfield  
Suzanne Blyth  
Kelly Bombay  
Catherine Bonifacio  
Lezel Botha  
Jessica Bould  
Katie Bowdler  
Ryan Bradley  
Brittany Bradley-Cane  
Matthew Brajkovich  
Olivia Bretherton  
Solomon Brett  
Michael Briggs  
Karli Bristed  
Cameron Brooks  
Ryan Brosnahan  
Georgia Brown  
Louis Brown  
Philip Brown  
Cameron Browne  
Catherine Bryant  
Tania Bryant  
Sarah Burgess  
Grace Burman  
Harrison Burnard  
Alice Burnett  
Michelle Burns  
Petra Burns  
Andrew Calder  
Nikki Callinan  
Antoinette Campbell  
Dougall Campbell  
Richard Campion  
Luke Carey  
Rachael Carruthers  
Clifford Chai  
Michelle (Lok Yan) Chan  
Sujoy Chand  
Emma Chandler  
Vincent Chao  
Emma Chapman  
Mark Charlesworth  
Jessica Chen  
Sophia (Boya) Chen  
James Cheng  
Scott Cheng  
Nita Chhagan  
Tom Chi  
Amelia Ching  
Jennifer Chivers  
Kate Chivers  
Eleanor Christensen  
Stefanie Christensen  
Laura Christian  
Baris Chung  
Liam Clark  
Larissa (Lara) Clarke  
Sally Clarkson  
Kirsty Clement  
David Clouston  
Tony Clow  
Jarrod Colbert  
Samantha Colgan  
Lucy Collins  
Daniel Collis  
Ross Cooper  
Thomas Cooper-Cuthbert  
Rachel Cottam  
Juliana Cox  
Hamish Crawford  
Michelle Creamer  
Sean Crocker  
Brent Cryer  
Trevor Cullen  
Ben Cunningham  
Matthew Curran  
Makarena Dalton  
Peter Daly  
Michael Dance  
Ila Daniels  
Mark Davey  
Katrina David  
Fran Davies  
Anita Dawe  
Maxine Day  
Tom De Pelsemaeker  
Farida Dean  
Stephanie Dean  
Stephen Dennis

Jaime Devereux	Elizabeth Hislop	Matthew Mackay	Nicola Petrie	Melanie Taylor	Laura Galt	Antonio Huang	Zoe Anderson	Caitlin Dodsworth	Jorgia Kelsey	Judith Neilson	Joanne Tan
Nadia D'Hart	Irene Ho	Philippa Mackay	Jeremy Phillips	Steph Taylor	Anne Hessell	Raymond Huang	Sophie Andrews	Mark Dold	Joshua Kendrew	Rosemaree Nepia	Levin Tan
Sally Dicey	Josef Holland	Tiena Malone	Jessica Phillips	Blair Telford	Alexandra King	Pippa Huddleston	Stephanie Andrews-Paul	Olivia Dommett	Christopher Khouri	Michael Nettleship	Anh Tang
Rowan Dixon	Daniella Holschier	Toby Mandeno	Kasuni Thewarapperuma	Kasuni Thewarapperuma	Alice Lund	Mathew Husband	Bill Apusae	Roxanne Dow	Ben Kidlare	Mona Neumann	Daisy (Zhe) Tang
Philip Doole	Graham Hooper	Jessica Manhire	Matthew Thode	Matthew Thode	Raj Maharjan	Callum Inns	Vincent Ashman	Brynna Downey	Matthew Kilpatrick	Annabelle Newell	Damian Tang
Jason Drury	Keith Hornby	Fennel Mason	Luke Place	Kahlia Thomas	Katie Martin	Tai Il (Darren) Jeong	Helah Atal	Benny (Seo Young) Kim	Kelsey Newman	Kelsey Newman	Xuemei Tang
Michael Duindam	Alice Hosted	Craig Mathieson	Gareth Pottinger	Amy Thompson	Erina Metcalf	Gabriela Jimenez Rojas	Elizabeth Au	Jeehyeon Kim	Andrew Duncanson	Han Long (Eddie) Ng	Bridget Taylor
Kelly Durham	Megan Howard	James Mathieson	Bryce Powell	Hannah Thompson	Josephine Michalakias	Claudia Jones	Catherine Auckram	Portia King	Nicholas Eady	Tin Chon Ng	Cedric Tevaga
Sally Dymond	Hsin-Hua (Sandy) Hsiao	Amy Maxwell	Ciaran Power	Campbell Thomson	Gemma Moleta	Shonelle Eccles	Rebecca Austin	Ella Klinac	Shonelle Eccles	Ashleigh Ngow	Maulik Thakkar
Kimberley Edmonds	Judy (Qiu Yan) Hu	Ryan McAlister	Lisa Poynton	Hannah Thomson	Arna Neivandt	Brendan Judd	Wiktorja Badran	Sarah Knott	Rebecca Einarsen	Kerry Ni	William Thursfield
Victoria Edmonds	Kai Xin (Katherine) Hu	Carolyn McAlley	Sabrina Quarente	Elliot Thornton	Sonya Nicol	Nathan Keyte	Nathan Keyte	Josh Knowles	Heleina Erasito	James Nicol	Laura Tinker
Hannah Edwards	Christine (Shi Ting) Huang	John McCall	Adele Radburnd	Caleb Tien	April Peckham	Helene Kirpensteijn	Ethan Banal	Lucy Knowles	Alexander (Alex) Erceg	Samuel Nicoll	Christie Tippett
Susan Edwards	Tianxu (Brian) Huang	Antonia McClean	Jessica Rainford	Simon Titter	Astrid Powell	Alexandra Kitson	Louise Barclay	Akari Kurimasa	Edwar Eshow	Stella Norris	Mandy Tocher
Natasha Eichler	Kathleen Hudson	Peter McCoskrie	Susan Rawles	Michael Treacy	Natasha Rival	Jessica Kuhn	Etienne Baring	Robyn Kvalsvig	Rebecca Drake	Pareputiputi Nuku	Georgia Tremear
Sally Elford	Rachelle Hui	Hugh McCullough	Natasha Reid	Imogen Tropicin	Emma Spalding	Joey Lott	Boris Barnett	Nirnay Lakshman	Vyvienne Evans	Tegan O'Callaghan	Thomas Trevilla
Sophie Elliott	William Hung	Adam McCutcheon	Nickolas Renton	Yuto Tsuchiya	Gael Stevens	Diana Luong	Maiah Barnfield	Yat O'Hearn	Laura Everett	Taylor O'Hearn	Blaise Turnbull
Katrina Ellis	Katrina Hunt	Torrey McDonnell	Matthew Richards	Penelope Tucker		Suraj Mahimkar	Abdulrahman Bashir	Marie Landingin	Alice Falloon	Yat Oudom	Emma Turner
Hayley Ellison	Alicia Hunter	Angela McFlynn	Oliver Richards	Jessica Tuilaepa		Samuel Beadle	Samuel Beadle	Donna Paki	Kate Fan	Amit Patel	Max Turver
Catherine Elvidge	Tara Hurley	Shane McGhie	Kate Richardson	John (Jack) Turner		Nicholas Beattie	Nicholas Beattie	Natalia Uriasheva	Jackson Fankhauser	Brittany Vari	Maurice Vaze
Ruth Evans	James Imlach	Holly McGrouther	Philippa Riddell	Manasi Vaidya		Ben Beer	Ben Beer	Pim van den Top	Jay Feng	Krupa Patel	Annikka Van Dorp
Luke Fanayan	Karen Inglis	Carolyn McIntyre	Florian Risse	Anne van der Walt		Angela Bell	Angela Bell	Jason Van Niekerk	Yisi (Cecilia) Feng	Pranami Patel	
Sian Farrell	Zoe Ishrar	Anita Vanstone	Kaitlyn Ritchie	Anita Vanstone		George Bell	George Bell		Kirsten File	Joshua Patterson	
Gemma Ferguson	Rochelle Jacobs	Charlotte Veikune	Sally Robins	Charlotte Veikune		Dan Benny	Dan Benny		Kahurimu Flavell	Ryan J Patterson	
Sara Field	Rakad Jaffer	Elish Robinson	Alisha Robinson	Charlote Vellinga		Chinley Bernardo	Chinley Bernardo		Marcus Fletcher	Jordan Pauw	
Blair Firmston	Luka Jansen	Fiona McLeod	Sarah Robson	Bridget Venning		Jean Berry	Jean Berry		Elsie Flynn Fleming	Scott Payne	
Michelle Flay	Sisira Jayasinghe	Jacqueline McNae	Simon Roche	Brendan Versluys		Amina Bhikoo	Amina Bhikoo		Emeline (Nine) Fonua	Oscar Perress-Wills	
Bridie Fleming	Joseph Jeffries	Sarah McPhee	Ann Rodgers	Adam Vincent		Grace Forno	Grace Forno		Benjamin Foster	Juliette Perry-Dumarquez	
Rosie Flynn	Holly Jenkins	Lucy McWilliam	Devon Rollo	Hinetaakoha (Hayley) Viriaere		Mia Bigalk Shanks	Mia Bigalk Shanks		William Foster	Lazar Petkovic	
Kyall Foley	Anshita Jerath	Kristina Mead	Jessica Rose	Hayden Wadams		Miranda Birchler	Miranda Birchler		Dermot Frengley	Hannah Pettengell	
Miffy Foley	Lucy (Xinran) Ji	Alyce Melrose	Clare Wall Shaw	Clare Wall Shaw		Darren Botha	Darren Botha		Angela Fusitua	Rachael Phillips	
Karen Foster	Jethro Joffe	Adam Mercieca	Nicole Wallace	Nicole Wallace		Kurt Bowen	Kurt Bowen		Shawn Gardner	Jaclyn Phillott	
Abbie Fowler	Anna Johnson	Lisa Miers	Krystal Walton	Krystal Walton		Liv Boyle	Liv Boyle		Pero Garlick	Christle Pilkington	
Monique Frampton	Alyssa Jones	Christopher Miles	Melanie Rountree	Melanie Rountree		Linore Brav-Cubitt	Linore Brav-Cubitt		Jonathan Gensik	Isabelle Plaisted	
Cara Francesco	Shona Jowett	Andrew Miller	Marcus Ruddock	Marcus Ruddock		Amon Brown	Amon Brown		Tara Ghanim	Ali Raja	
Kimberley Freeman	Stephanie Jowett	Haylee Minoprio	Michelle Ruske	Michelle Ruske		Zachary Burns	Zachary Burns		Amberley Gibson	Victoria Liu	
Junitta Fretton	Stephanie Kane	Shravan Miryala	Jonathan Ryan	Jonathan Ryan		Felicity Butcher	Felicity Butcher		Simone Gilroy	Nancy Gomez	
Samuel Fuchs	Ye Kang	Jasmine Mitchell	Rashida Sahib	Rashida Sahib		Stuart Pearson	Stuart Pearson		Nancy Gomez	Mithran Gopinath	
Yujie Gao	Jasmin Kaur	Olivier Monthule-McIntosh	Rebecca Sanders	Rebecca Sanders		Maxwell Pocock	Maxwell Pocock		Aron Goundar	Brigid Graney	
Holly Gardiner	Samantha Kealey	Christopher Moore	Anna Sanson	Anna Sanson		Nigya Pokhrel	Nigya Pokhrel		Adam Gray	Adam Gray	
Paul Gardiner	Joshua Kennedy	Kimberley Morete	Steven Sanson	Steven Sanson		Mayuri Bhole	Mayuri Bhole		Layla Gruebner	Oliver Haarhoff	
Ross Gardiner	Thomas Keogh	Rachel Morgan	Pamela Santos	Pamela Santos		Emily Reid	Emily Reid		Joyce Habgood	Lucy Halcrow	
Stephen Gascoigne	Matthew Kerr-Ridge	Emma Morris	Cosette Saville	Cosette Saville		Callum Riddle	Callum Riddle		Isabella Halligan	Isabella Halligan	
Sarah Gathercole	Matthew (Matt) Keyse	Samuel Morrison	Charlotte Sayer	Charlotte Sayer		Jacob Robb	Jacob Robb		Sam Hammond	Lucy Rossiter	
Alice Xinyue Ge	Raheel Khan	Claire Morton	Kathryn Schicker	Kathryn Schicker		Tessa Robins	Tessa Robins		Hyebin Han	Cameron Rossouw	
Alison Geddes	Ariel King	Patrick Moss	Lorelei Sarra	Lorelei Sarra		Jemma Ryan	Jemma Ryan		Anna Hanley	Yohan Ryoo	
Zenaida Gerente	Daniel Kinnoch	Sarah Mossman	Hamish Scott	Hamish Scott		Emma Ryder	Emma Ryder		Christina Hanna	Alana Mako	
Claire Gibb	Aidan Kirkby-McLeod	Mary Muller	Michael Scott	Michael Scott		Maneesha Sakamuri	Maneesha Sakamuri		Cas Hannink	Joshua Mandeno	
Frances Gibbons	Ike Kleynbos	Leonie Mullions	Alexandra Scouller	Alexandra Scouller		Nigya Pokhrel	Nigya Pokhrel		Don Manlangit	Jacob Marshall	
Lisa-Maree Gibellini	Matthew Klomp	Bridget Murdoch	Nirosha Seelaratne	Nirosha Seelaratne		Kate Scanlen	Kate Scanlen		David Harnett	Katherine Martin	
Paul Gibson	Keita Kohere	Alice Murphy	Heather Shannon	Heather Shannon		Charlotte Scotchbrook	Charlotte Scotchbrook		Oliver Harper-Quayle	Helen Matunga	
Alex Gifford	Louisa Kopa	Gavin Murray	Daniel Shaw	Daniel Shaw		Sam Shears	Sam Shears		Fern Harpham	Katie Maxwell	
Wednesday Gilbert	Alice Krienenburg	Jacinta Naicker	Richard Sheild	Richard Sheild		Hannah Shingler	Hannah Shingler		Cameron Harridge	Millie Schwarz	
Lana Gooderham	Olivia Krielen	Masato Nakamura	Ella Shields	Ella Shields		Elizabeth Shires	Elizabeth Shires		Benjamin Haworth	Caitlin McClellan	
Ross Goodman	Anita Kulasic	Evelyn Neal	Chyi Sim	Chyi Sim		Courtney Sinclair-Eagle	Courtney Sinclair-Eagle		Mitchell Haywood	Malcolm McCracken	
Angela Goodwin	Vincent Kuo	Olivia Neame	Elizabeth Simpson	Elizabeth Simpson		Ella Sparrow	Ella Sparrow		Qinhui He	Lachlan McCullough	
Elizabeth Gosling	Sheena Kwan	Cassandra Ng	Tajit Singh-Sandhu	Tajit Singh-Sandhu		Holly Stevens	Holly Stevens		Rebecca Heaven	Iris Shing	
Matthew Gouge	Camille Ladyman	Catherine Nichol	Jamie Sirl	Jamie Sirl		Lynne Sun	Lynne Sun		Kyle Hefferon	Clare McDaniel	
Kate L Graham	Tommy Lai	Susan Nicholas	Natasha Sitarz	Natasha Sitarz		John Sutherland	John Sutherland		Greg Underwood	Mark Shelly	
David Grant	Elisabeth Laird	Hoda Nozari	Wayne Wing Ho Siu	Wayne Wing Ho Siu		Kye Mun (Mandy) Tang	Kye Mun (Mandy) Tang		Maggie Cook	Joshua McDonald-Davies	
Claire Gray	Swastika Lakhan	James Oakley	Robert Skinner	Robert Skinner		Lee Kong Te	Lee Kong Te		Daniel Cooper	Joseph (Joe) McDougall	
Katrina Gray	Jordyn Landers	Kataraina O'Brien	Suzienne Slegers	Suzienne Slegers		Alicia Todd	Alicia Todd		Samuel Cooper	Leah McEnhill	
David Greaves	Nicholas Law	Simon O'Connor	Fiona Small	Fiona Small		Charlie Tseng	Charlie Tseng		Logan Copland	Ding Simin	
Brad Greening	Rachael Law	Cole O'Keefe	Renata Smit	Renata Smit		Alec Duncan	Alec Duncan		Valerie Cortes	Samantha (Sam) McGough	
Ayvron Greenway	Rhedyn Law	Elisha Oldridge	Andrea Smith	Andrea Smith		Stephanie Dwyer	Stephanie Dwyer		Nomesia Costa dos Reis	Jake McLaren	
Jackson Greenwell	Helen Lawrence	Ryan O'Leary	Janelle Smith	Janelle Smith		Luke Elliott	Luke Elliott		Jack Cowie	Colin McLeay	
Aaron Grey	Rhezza Layco	Greer Oliver	Lydia Smith	Lydia Smith		Morgan Fallowfield	Morgan Fallowfield		Tamzin Cowie	Melissa McMullan	
Ashleigh Gulliver	Romet Layco	Sarah Oliver	Vijay Soma	Vijay Soma		Julia Farnilton	Julia Farnilton		William Craig	James Miguel	
Sarah Gunnell	Esther (Uu Hyun) Lee	Josephine Orange	Shifani Sood	Shifani Sood		Arthur Flintoff	Arthur Flintoff		Laura Cranston	Te Wakaunua Milki-Te	
Haoran - Jeffrey Guo	Bronwyn Lees	Phoebe Osborne	Jessica Sorensen	Jessica Sorensen		Michelle Fluker	Michelle Fluker		Harry Crawford	Vicky Hu	
Aaron Hakkaart	Karin Lepoutre	Paul O'Shaughnessy	Marina Spasovska	Marina Spasovska		Lauren Ford	Lauren Ford		Logan Crawford	Aaron Hudson	
Harry Halpin	Jo Lester	Janine Speedy	Janine Speedy	Janine Speedy		Jeff Fuller	Jeff Fuller		Layla Croker	Bryony Hutcheson	
Shaun Hamilton	Kerryanne Lewis	Amy Spurdle	Nathan Stocker	Nathan Stocker		Gabriela Glory	Gabriela Glory		Kiri Crossland	Emilia Hutchins	
Ana Hancock	Peixuan Li	Kura Stafford	Kerstin Strauss	Kerstin Strauss		Gabriela Glory	Gabriela Glory		James Cummins	Judith (Lynley) Hutton	
Isabel Hand	Kirk Lightbody	Erin Stagg	Eamon Guthrie	Eamon Guthrie		Sierra Gordon	Sierra Gordon		Nina Darling	Nick Mitchell	
Jodie Hansen	Andreas Lilley	Shirley Pang	Michael Guy	Michael Guy		Adriene Grafia	Adriene Grafia		Christian Davey	Janna Isles	
Steph Hantler	Fleur Lincoln	Jimmy Panther Knight	Benjamin Haddrell	Benjamin Haddrell		Lydia Guo	Lydia Guo		Oliver Davidson	Thejas Jagannath	
Rereata Hardman-Miller	Callum Lindsay	Mary Pappoon	Shenan Stanton	Shenan Stanton		Kristina Gurshin	Kristina Gurshin		Jacinda Davis	Eejoo Jeong	
Chanel Hargrave	Sonja Lister	Rebecca Parish	John Stenberg	John Stenberg		Mikayla Woods	Mikayla Woods		Matheson Day	Laura Jessen	
John Harold	Tianhang Liu	Kon-Woo (Caleb) Park	Anna Stevens	Anna Stevens		Alexander Wright	Alexander Wright		Tyrone Deiey	Tim Jiang	
Kendyll Harper	Xinran (Audrey) Liu	Jessica Parulian	Nathan Stocker	Nathan Stocker		Kerry Wynne	Kerry Wynne		Xiaoxuan (Claire) Deng	Hai Tao Jing	
Bill Harrington	Ying Liu	Kate Pascall	Kerstin Strauss	Kerstin Strauss		Jessie Xie	Jessie Xie		Kara Dentice	Jin Woo Jo	
Nathan Harris	Andrew Long	Robert Love	Matthew Stulen	Matthew Stulen		Milcah Xkenjik	Milcah Xkenjik		Gowan Ditchburn	Conrad Anderson	
Rebecca Harris	Marie Long	Jaiman Patel	Qiaoqun (Erica) Su	Qiaoqun (Erica) Su		William Hall	William Hall		Vignesh Divakar	Helen Andrews	
Shaun Harvey	Sophie Lord	Sunit Patel	Angela Taganahan	Angela Taganahan		Rebecca Hare	Rebecca Hare		Fraser Dixon	Ruth Andrews	
Gemma Hayes	Robert Love	Emily Patterson	Angela Penfold	Angela Penfold		Kathleen Haylock	Kathleen Haylock		Shivaun Dockery	Kim Anstey	
Hamish Henderson	Carl Lucca	Jonathan Payne	Ashlee Peters	Ashlee Peters		Oliver (Ollie) Hermans	Oliver (Ollie) Hermans		Ethan Dodds		
Joseph Henahan	Nyssa Payne-Harker					Charlotte Heyd	Charlotte Heyd				
Marina Hetaraka	Tommy Ma					Nevada Huaki-Foote	Nevada Huaki-Foote				
Brendon Hewett	Sarah MacCormick										
Gen Hewett	Charlotte MacDonald										



James Aoake  
Mark Arbuthnot  
Maheeka Ariyapperuma  
Bramantino Armiento  
Kelsey Ashworth  
Helen Atkins  
Ravi Teja Ayyagari  
Edita Babos  
Matthew Bacon  
Marsha Badon  
Jonathan Bainbridge  
Arlene Baird  
Jeff Baker  
Remo Bangi  
Mishka Banhidi  
Rhannon Barbour  
Coralie Barker  
Timothy Barnard  
Lorelle Barry  
Kathleen Barry-Piceno  
Ezra Barwell  
Shannon Baxter  
Taya Baxter  
Helen Bealey  
Jono Begg  
Mathew Bell  
Russell Benge  
Helga Bennett  
Anna Bensemann  
Amilie Bentley  
Kelsey Bergin  
Johan Bergman  
Natasha Berkett  
Susanne Bernsdorf Solly  
Simon Berry  
Clint Betteridge  
Paul Beverley  
Sean Bignell  
Richard Bigsby  
Kim Bird  
Phillip Blackwood  
Stephanie Blick  
Anastasia Blignaut  
David Boersen  
Catherine Boulton  
Chanti Boyle  
Richard Brabant  
Anne Bradbury  
Carel (Wayne) Brede-meijer  
Robyn Broadhurst  
Billy Brough  
Aimee Brown  
Daniel Brown  
Natasha Brown  
Rachael Brown  
Catherine Brunet  
Linda Bruwer  
Jeremy Brydon  
Amber Buckley  
Mark Buckley  
Quentin Budd  
Kathleen Bunting  
Jesse Burgess  
Cole Burmester  
Rebecca Burton  
Jeremy Butler  
Micah Butt  
Josh Caddigan  
Jennifer Caldwell  
Helen Caley  
Sarah Cameron  
Cathy Campbell  
Scott Cantley  
Nathan Capper  
Tina Carlson McColl  
Andy Carr  
Maria Cashmore  
Kelly Cattermole  
Reza Chalabianlou  
Louise Chauhan  
Jian Chen  
Simon Childs  
Stephanie Chin  
Peter Christophers  
Richard Clare  
Leah Clark  
Ben Clearwater  
Carys Coleman  
Laura Coll McLaughlin  
Julie Comfort

Gemma Conlon-Geddes  
Matt Conway  
Glen Cooper  
Frederic Coughlan  
Milan Covic  
Daniel Cox  
Aileen Crow  
Jessica Crawford  
Cathy Crooks  
Allan Cubitt  
Liam Daggy  
Clare Dale  
John Daly  
Sarah Davidson  
Richard Davison  
Amanda de Jong  
Eynon Delamere  
Kristen Dempster  
Summer Denize  
Sean Dent  
Neeta Deo  
Leona deRidder  
Hannah Divehall  
Francis Doesburg  
Melanie Donaghy  
Malc Donald  
Damienne Donaldson  
Micah Donaldson  
Nico Donovan-Pereira  
Jane Doogue  
William Dorset  
Brendan Doyle  
Thomas Doyle  
Graeme Drake  
Carissa du Plessis  
Rachel Ducker  
Sarah Duffy  
Matthew Dugmore  
Maaike Duncan  
Alex Dunn  
Michael Dunphy  
Monique Dyer  
Monique Eade  
Nicholas Eagle  
Scott Edgar  
Christine Edgley  
Todd Elder  
Karwan Eliassi  
Rebecca Ellery  
Timothy Ensor  
Nicola Etheridge  
Sarah Evans  
Jamie Exeter  
Katherine Exeter  
Douglas Fairgray  
Luke Faithfull  
Richard Falconer  
Lance Feaver  
Sue-Ellen Fenelon  
Angela Fenemor  
John Ferguson  
Margaret Ferguson  
Rod Finlayson  
Timothy Fischer  
Andrew Fitzgerald  
Rebecca Folster  
Tony Fraser  
Paul Freeland  
Michael Freeman  
Peter Fuller  
Paul Futter  
Jo Fyfe  
Siatua Gabriel  
Jhonny Gaglione  
Jeannie Galavazi  
Kylie Galbraith  
Penelope Gallagher  
Wendy Gallagher  
Benjamin (Ben) Gamble  
Deborah Ganley  
Kim Garner  
Nathan Geard  
Xiaoxiao (Megan) Geng  
Mark Georgeson  
Jessica Gerry  
Ensiyeh Ghavampour  
Kerstin Ghisel  
Sumita Ghosh  
David Gibson  
Brett Giddens  
Sam Gifford

Dean Glen  
Ethan Glover  
Susan (Sue) Godbaz  
Claudia Gonzales Pino  
Stephen Goodwin  
Fiona Gordon  
Chelsea Gosden  
Hannah Goslin  
Kelly Governor  
Kate Graham  
Tracey Grant  
Nicola Green  
Simon Greening  
Erin Griffith  
Ashleigh Grose  
Courtney Guise  
Pauline Hadfield  
Geoffrey Haines  
Joseph Hale  
Garrett Hall  
Michael Hall  
Cameron Hames  
Daniel Hamilton  
Sarah Hamilton  
David Hampson  
Natalie Hampson  
Lindsay Hannah  
Mimouk Hannan  
Paula Hansen  
Sheryl Hansford  
Paula Harborne  
Jennifer Harbour  
Ella Hardman  
Rochelle Hardy  
Carissa du Plessis  
Richard Harkness  
Brett Harries  
Matthew Harrison  
Joanna Hart  
Anna Harvey  
James Hassall  
Colin Hattingh  
Lisa Hayes  
Joanne Healy  
Sylvie Heard  
Philip Heffernan  
Terrina Helliwell  
Sarah Heritage  
Helen Hicks  
Thomas Hikairo  
Mary Hill  
Carly Hinde  
Matt Hoffman  
Lucy Holden  
Rebecca Holden  
Alanna Hollier  
Jessica Hollis  
Vivienne Holm  
Vanessa Honore  
Russell Hooper  
Karyn Hopkins  
Charlie Hopkins  
Stephen Howard  
Bevan Hudson  
Ruth Hudson  
Emily Hunt  
Samual (Sam) Hurley  
Ian Hyde  
Mansor Ibrahim  
Rebecca Inwood  
Jennifer Jack  
Rebecca Jackson  
Alexandra (Alex) Jamieson  
Erica Jane  
Iresh Jayawardena  
Nadia Jefferis  
Campbell Jensen  
Anna L Johnson  
Barry Johnson  
Helen Johnson  
Timothy Johnston  
Anna Jones  
Cameron Jones  
Hayley Jones  
Jason Jones  
Michael Jones  
Karen Joubert  
Jennifer Joynt  
Hannah Julian  
Christina Kaiser  
Andrew Kantor

Simon Karl  
Sharyn Kashyap  
Te Pio Kawe  
Leon Keefer  
Nathan Keenan  
Scott Kelly  
Justine Kennedy  
Gerry Kessels  
Bahareh Khodaparast  
Alexandra King  
Melanya King  
Nicola Kirby  
Andrew Kirk  
Stephanie Kirk  
Christopher Kissling  
Rae-Anne Kucucz  
Benjamin Lam  
Isabel Lam  
Priyashni Lancashire  
Nicholas Lau  
Joanna (Jo) Laurenson  
Michael Lawrie  
Sylvie Leduc  
Katrina Lee  
Kuanjin Lee  
Nessa Legg  
Sean Leslie  
Peter Linde  
Matthew Lindenberg  
Brigid (Biddy) Livesey  
Kim Logan  
Eloise Lonnberg-Shaw  
Jeffrey Loo  
William Loutit  
Adrian Low  
Philippa Lynch  
Kenny MacDonald  
Joao Machado  
Andrew MacLennan  
Warren MacLennan  
Jane MacLeod  
Kathryn Maguire  
Huda Majeed  
Victoria Majoor  
Nicole Malpass  
Tabitha Manderson  
Jessica Mangos  
Tauru Manihera  
Kayla Manson  
Thomas Marchant  
Mat Marois  
Lisa Marquardt  
Laura Marra  
Andrea Marshall  
Dorelle Martin  
Julia Masters  
Damon Mathfield  
Vincent (Vince) Matschke  
Elias Mathee  
Fiona Matthews  
Lynka May  
Francesca McAdam  
Andrew Rabbidg  
Hannah McCashin  
Nicholas McCool  
Zoe McCormack  
Michael McEnaney  
Andrew McFarlane  
Quinn McIntyre  
Tom McIntyre  
Heather McKay  
Harriet McKee  
Josh McKone  
Matthew McLachlan  
Louise McLay  
Blair McLean  
Simeon McLean  
Anna McLellan  
Abbey McMillan  
Kate McNab  
Jeffrey McNeill  
Anne McNoe  
Karlene McPike  
Alastair Meehan  
Andrew Metherell  
Shanan Miles  
Murray Miller  
Tracey Miller  
James Minehan  
David Mitchell  
Vrinda Moghe

Roy Montgomery  
Kailas Moral  
Amanda Moran  
Fliss Morey  
Craig Moriarty  
Michael Morris  
Kate Morrissey  
Tracey Morse  
Ella Mowat  
Bridgette Munro  
Ashwita Murphy  
Stephanie Murphy  
Jane Murray  
Brent Musk  
Victoria Mylchreest  
Deenishnee Naidoo  
Sandhira Naidoo  
Purnima Naidu  
Priyashni Nair-Mudaliar  
Sally Neal  
Jacob Neaves  
Cameron Neilson  
Luke Nelson  
David Newey  
Heong Ng  
Nichola Nicholson  
Will Nicolson  
Jo Noble  
Nathan O'Connell  
Emma O'Neill  
Claudine Osborne  
Hamish Osborne  
Katherine Overwater  
Jill Owen  
Baylee Pakau  
Matthew Parker-Bevin  
Mineeta Patel  
Scott Paton  
Terriann Payne  
Hamish Peacock  
Whitney Peat  
Stuart Penfold  
Sorcha Peren  
Claire Perkins  
Charlotte Phelps  
Claire Phillips  
Bryce Phillipson  
David Phizacklea  
Samuel (Sam) Pickering  
Helen Pickles  
Nina Pivac  
Dylan Pope  
Samantha Pottage  
Esther-Army Powell  
Anna Price  
Dawn Pritchard  
Natasha Pritchard  
David Pullar  
Jessica Pullen  
Karla Putt  
Erin Quin  
Leandra Raats  
Andrew Rabbidg  
Caroline Rachlin  
Mhairi Rademaker  
Marius Rademeyer  
David Randal  
Christopher Randell  
Matthew Read  
Annie Reed  
Dory Reeves  
Natalie Reeves  
Nicole Reid  
Barbara Ribeiro  
Luke Richards  
Clare Ridler  
Nathan Riley  
Lisa Ringleiff  
Peter Roan  
Melissa Rodger  
Corme Roelofse  
Danielle Rogers  
Scott Rose  
Kathryn Ross  
Kaaren Rosser  
Parvati Rotherham  
Patricia (Trish) Routley  
Peter Runcie  
Tanya Running  
Katie Russell  
Sue Ruston

Natalie Rutland  
Stuart Ryan  
Lillie Sadler  
Summer Salmon  
Jess Samuels  
John Scheele  
Biance Schoeman  
Mark Schreurs  
Alan Wilkinson  
Paige Wilkinson  
Jeremy Williams  
Rowan Williams  
Nick Williamson  
Belinda Willis  
Natasha Wilson  
Sarah Wilson  
Tyneal Windelborn  
Nicola Wingrove  
Gabi Wlfer  
Louise Wood  
Natalie Wood  
Zane Wood  
Andrew Woodford  
Nicholas Woodley  
Kirsty Woods  
Jacob Woodward  
Diana Worthy  
Jason Wright  
Jerome Wyeth  
Melanie Wykes  
Ewan Wymer  
Vesa Xharra  
Jill Young  
Tom Young  
Marc Zablotny  
Peri Zee  
Minnie Zhang  
Peng Zhang  
Dianne Zucchetto

Stephen West  
Lyndon Westlake  
Ashleigh Wharam  
James Whetu  
Michelle Whitaker  
Nicole White  
Jarette Wickham  
Anna Wilkes  
Alan Wilkinson  
Paige Wilkinson  
Jeremy Williams  
Rowan Williams  
Nick Williamson  
Belinda Willis  
Natasha Wilson  
Sarah Wilson  
Tyneal Windelborn  
Nicola Wingrove  
Gabi Wlfer  
Louise Wood  
Natalie Wood  
Zane Wood  
Andrew Woodford  
Nicholas Woodley  
Kirsty Woods  
Jacob Woodward  
Diana Worthy  
Jason Wright  
Jerome Wyeth  
Melanie Wykes  
Ewan Wymer  
Vesa Xharra  
Jill Young  
Tom Young  
Marc Zablotny  
Peri Zee  
Minnie Zhang  
Peng Zhang  
Dianne Zucchetto

Christine Ralph  
Andrew Ralph  
Robert Riddell  
William Robertson  
ONZM  
Jo Rosier  
Robert Schlotjes  
David Sheppard  
Warren Stace  
Helen Tobin  
Eileen von Dadelszen  
Vernon Warren  
Ted Wells  
Alan Withy  
Robert Wyber  
Adrienne Young-Cooper

Non Active

Rose Bayes-Powell  
Anna Belz  
James Berghan  
Kylie Brayshaw  
Nicholas (Nick) Carroll  
Alia Cederman  
Glodia Choi  
Ailish Collins  
Lucy Deverall  
Samantha Dowse  
Jennifer Edwards  
Rebecca Eng  
Tara Enright  
Jennifer Esterman  
Alexandria Fraser  
Sarah Haarhoff  
Bess Halley  
Andrew Hillgrove  
Emily Ip  
Isobel Jennings  
Susan O Jones  
Caitlin Kelly  
Monique Kimber  
Sarah McCarthy  
Mary McConnell  
Sara McMillan  
Shelley Milosavljevic  
Grace Ng  
Malory Osmond  
Patricia Paschke  
Melissa Pearson  
Robert Peel  
Claire Price  
Rachel Purdy  
Elisabeth Resl  
Kimberley Rolton  
Cushla Salt  
Rochelle Sewell  
Aimee Simons  
Mark Simpson  
Allenie Smith  
Chloe Smith  
Tanya Stevens  
Alexandra Strawbridge  
Tessa Sutherland  
Hayley Thomas  
Laura Thomson  
Annemarie Townsley  
Charles Wang  
Fritha Witton

Associate (Partially Active)

Neda Bolouri  
Wayne Donovan  
Kellie Ellis  
Aimee Haycock  
Emma Hilderink  
Dyanna Jolly  
Joanne Pacey  
Hannah Palmer  
Rebecca Robertson  
Tracy Roe

Retired

Heather Ash  
Bryan Bang  
Max Barber  
John Betts  
Dirk Bolt  
Elizabeth Briggs  
Hugh Briggs  
David Chandler  
Jim Clarke  
Brian Coultts  
Peter Crawford  
John Dryden  
Ross Dunlop  
Kathryn Edmonds  
Lindsay Gow  
Matthew Grainger  
Joy Grant  
David Grove  
Rex Hannam  
Robert Hayles  
Ewen Henderson  
David Hinman  
Patricia Holm  
Stuart Kinnear  
Gordon Macfarlane  
Keith Mahony  
John Mandemaker  
Jon Maplesden  
(James) Fraser McRae  
Shelagh Noble  
Keith Phyn  
Graham Power

Technician

David Bridges

Welcome to the following people who became Full members in 2019:

Leah Alexander  
Daan Blokker  
Claire Booth  
Bev Bray  
Trudi Burney  
Megan Dever  
Trevor Ellis  
Reina England  
Sven Exeter  
Alison Francis  
Tiffany Gower  
Maree Kleinlangevelsloo  
TerylL Lepper  
Anthony Leung  
Bryan McGillan  
Fraser McNutt  
Shelley Milosavljevic  
Lynley Newport  
Natalie Palmer  
Kelly Parekowhai  
Sarah Picard  
Reginald Proffit  
Sid Scull  
Clare Steele  
Paul Thompson  
Kirsty Van Reenen  
Elizabeth White  
Tim Wilson  
Andrew Wood

2020 AGM AGENDA online

Thursday 16 April 4:00pm  
ZOOM streamed meeting

- Welcome and Karakia
- Attendance and apologies
- 2019 AGM Minutes
- Annual Report
- Annual Accounts
- 2020 Board Workplan
- Appointment of Accountants and Auditors
- General Business
- Closing





# PLANNING 2021

## VALUES/VOICES/VISION CHAMPIONING THE PLANNING PROFESSION TO EXCEL

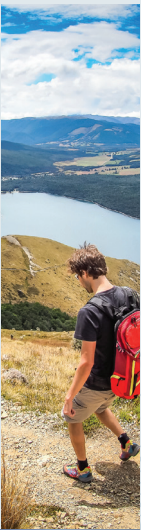


Join us in Nelson, the centre of New Zealand, for the NZPI 2021 Annual Conference. Explore how we promote the *values, voices and vision* of the planning profession, and the people we work with. We'll examine the broader role of planning in today's environment, and discuss how planners hear the voices of iwi, the community, and other professions.

You'll be inspired by thought leaders guiding the development of our communities and the management of our natural resources, and discover how planning can influence New Zealand's strategic direction. You'll also experience what the fantastic Nelson region has to offer!

*Nau mai, haere mai ki Whatatū i te tau ihu ō te waka a Māui.*

*The Planning 2021 conference will be held in Nelson  
from 23-26 March 2021. We hope you can join us.*



*"Patience is the calm acceptance that  
things can happen in a different order than  
the one you have in mind."*

David G. Allen







NEW ZEALAND  
**PLANNING INSTITUTE®**  
*Te Kokiringa Taumata*



#### **Auckland Head Office**

Level 19  
120 Albert Street  
Auckland City  
PO Box 106-481  
Auckland City 1143  
New Zealand  
Phone: +64 9 520 6277  
Email: [admin@planning.org.nz](mailto:admin@planning.org.nz)  
[planning.org.nz](http://planning.org.nz)

#### **Branches**

Auckland/Northland  
Waikato  
Bay of Plenty  
Central North Island  
Wellington  
Nelson/Marlborough  
Canterbury/Westland  
Otago  
Central Otago  
Southland  
United Kingdom